

Marnhull Messenger



www.marnhullmessenger.org.uk

June 2017 - Issue 75

From the Surgeries



What's new from our local doctors surgeries

page 7

Gardening Tips



Monthly tips from our village experts

page 16

From The Churches



All the latest news from the churches

page 14

From The Schools



The latest from our village schools

page 18

Marnhull Parish Council Special

page 22

Marnhull RBL Beer and Cider Fest

Friday June 30th from 8pm

Featuring 'Two Foot Moose'

Saturday July 1st from noon

Featuring 'Second Time Around' in the afternoon

Plus the 'The Silhouettes' in the evening

Marnhull Messenger Grants

Organisations, Clubs and Societies in the village are invited to apply for a Marnhull Messenger Grant.

To be considered for a grant, your organisation must:

- » Be Marnhull based
- » Apply for specific projects, events or items of equipment
- » Request a specific amount of money
- » Be expected to make a contribution to the same project
- » Provide a report at the end of the project

Applications will close on August 31st 2017 and the successful grants will be announced by the end of September.

Please send applications to:

Fiona Nelson, Marnhull Messenger Administrator

adminstrator@marnhullmessenger.org.uk / 01258 821036



G & A COOK

Motor Vehicle Services

Burton Street, Marnhull

Tel: 01258 820239

**General Repairs, Servicing,
MOTs (Cars & Motorcycles),
Brakes, Clutches, Diagnostics,
Tyres, Wheel Alignment**



ROBIN HILL STORES

POST OFFICE, CONVENIENCE STORE & DELICATESSEN



01258 820959

Monday-Saturday 8-5.30
Sunday 8-12



FREE RANGE HAND CARVED HAM, CHEESES,
OLIVES, SNACKS, FRESH BREADS, HOMEMADE
SANDWICHES, NEWSPAPERS & MAGAZINES.
A RANGE OF HOUSEHOLD ESSENTIALS, CARDS,
STATIONERY, WINES, BEERS & SPIRITS.



We now stock a range of ethically sourced gifts, including
cushions, candles, notebooks, silk scarves and more.

Home delivery on newspapers, magazines and groceries.

Fresh veg & fruit, breads & cakes - delivered in daily.

Special orders catered for.

Daily essentials & deals on branded products too.

Full Post Office service

Banking (cash withdrawal, cash & cheque deposits)

car tax, electricity, gas & mobile top up, National Lottery,

Foreign Currency, Health Lottery, Dry Cleaning.

www.robinhillstores.com

Email us on - robinhillstores@gmail.com



Welcome to your Marnhull Messenger

Chris Ryu - Messenger Editor

A bumper issue this month, which was made extra fun, by an software issue that required a re-build of half of the Messenger! There was too much to squeeze in to the usual 32 pages, so there's an additional 4 pages of content from the village and Stur that I think you'll find interesting.

You will have hopefully seen the Messenger Grants advert on the front-page - more on that from Ian on page 5.

A busy month with Atom Club as I'm pleased to say we've got the keys to our new education centre! There's a big update on page 19.

A huge well done to John and Atul for running the North Dorset Marathon!

So much news has come from the Parish council this month that they've got their very own section.

Next month will be the Fest and Flower Show Summer Special!

Deadline For Next Issue

MID-DAY 17th June

E-mail all texts, announcements and other requests to:
editor@marnhullmessenger.org.uk

Marnhull Messenger Contact Details

Editor: Chris Ryu - editor@marnhullmessenger.org.uk
01258 821654 - 3 Corner Close, Marnhull, DT10 1PB

Webmaster: Chris Ryu - as above

Advertising: Rosie Gall - advertising@marnhullmessenger.org.uk

Treasurer: Bill Shannon - treasurer@marnhullmessenger.org.uk
01258 820890

Circulation: The Eveleighs - circulation@marnhullmessenger.org.uk
01258 821049 - Weavers House, Burton Street, Marnhull, DT10 1PS

Chairman: Ian Gall - chairman@marnhullmessenger.org.uk
01258 820484

Administrator: Fiona Nelson - administrator@marnhullmessenger.org.uk
01258 821036

Disclaimer
The opinions expressed in the articles and on the pages of the Marnhull Messenger are not necessarily those of the Marnhull Messenger. All the dates and details are as supplied by the contributing organisations. The Marnhull Messenger is not responsible for errors or omissions, accuracy of the content, nor the failure of any published event to go ahead. The letters and articles published in this magazine are accepted in good faith and the views expressed therein are not necessarily the views of the Messenger Steering Committee, whose decisions on publication are delegated to the Editor and are final.

This publication is provided for your use "as is" without warranty of any kind, either expressed or implied; inclusion of an advertisement for an event or service does not imply that they are endorsed by the Marnhull Messenger. The Marnhull Messenger will take all reasonable precautions to ensure that the content is socially and morally acceptable.

Privacy Policy
The Marnhull Messenger respects the privacy of organisations and persons who submit information for publication. Personal details, including photographs, will only be published if approved and submitted by organisations or individuals. No personal details will be given out or sold to any third parties, whether individuals, organisations or companies.



Establishing The Conservation Areas The First Stab

Readers may recall my previous article on the establishing of the Marnhull Conservation Areas in the period 1969-1971, the story continues. In mid-August 1969, after receiving guidance from the County Planning Officer, The North Area Planning Officer, Mr Pakenham, made his first stab at defining the boundary of the Conservation Area. He is now Mr Pakenham, not Fakenham, because I was finally able to work out his signature on his correspondence! He wrote: "On the principle that the jewel without the setting lacks interest, I have included the land on either side of the approach from the South, the large open area of pasture in between New Street and Burton Street and an area South of Love Lane, which being rising land, acts as a back-cloth to the scene." He continues: "Burton Street and New Street are both equally elevated and get good views over the open middle land. From Sackmore Lane and the higher end of Church Lane(sic), the open area South of Love Lane is prominent. Marnhull is really 3 villages with outpost groups." This area, described by Mr Pakenham, covers most of the land in the centre of the village, as well as the current Conservation Areas. He then goes on to discuss "Article IV Directions".

My understanding of an Article IV Direction is that it is an order that it is made by a Local Planning Authority. It restricts permitted development rights and it should control development that could threaten the character of a Conservation Area, harm local amenity and harm the historic environment. It can also be used to protect the setting of all heritage assets, including listed buildings.

Mr Pakenham described his suggested Article IV Directions Areas "enclosed by a blue line" that in his words: "are of vital importance in retaining the village character of the several parts of the village and should not be allowed to be developed for housing, or industry". These blue line areas include (confusingly) what eventually became the current Marnhull Conservation Areas. (It is rather difficult to work out on the black and white copy of the 1969 map I have). Note, the phrase: "not be allowed to be developed"

Mr Pakenham then dealt with "Buildings of Architectural Merit". He says that: "There are quite a number of dwellings, some formerly Grade III, that are in need of some kind of protection. Those in Burton St are particularly important from the "group value" point of view. The village, apart from the Church and its surroundings is very short of good buildings of the 18th century and earlier. There are quite a few Victorian stone built villas, The Lodge, Tapshays and Nash Court in particular, which have a pleasant character and are good examples of local stone. These take a prominent place in the street scene." He is most worried about: "A problem relating to the extensive grounds attached to several of these houses. The time will come when the occupation of large dwellings is economically difficult and the paddocks and kitchen gardens have to be sold off. This will result in little pockets of bungalows, or houses springing up all over the place. This could lead to bad back development." One wonders just how prophetic Mr Pakenham was.

Tim Eveleigh Burton Street

The Curtain Man

Curtains Carpets Upholstery
Roller/Venetian/Roman Blinds

Free Measuring and Estimates
Expert Service - Competitive Prices

Burton Street, Marnhull
Sturminster Newton DT10 1PH
Tel/Fax: 01258 821117 Mobile: 07802 744869
email: thecurtainman@btconnect.com

The Marnhull Butcher Adrian Curtis

Marnhull's own rare breed - use him or lose him!

Locally sourced high quality meats at competitive prices.

Super large Roasting Chickens

Easy Carve Stuffed Goose * Easter Lamb

Burton St, Marnhull. Telephone orders taken. Local home delivery. 01258 820238



TURKS GARAGE

Marnhull Road,
Hinton St. Mary,
Sturminster Newton
Established 1988

Cars & Light
Commercial



MOT's



**SERVICING
& REPAIRS**
Petrol & Diesel

01258 472686

Blackmore Vale Inn

It's now just over a year since the pub closed and we regularly ask the Brewery for an update. The latest statement from Peter Kitching, the Estates Manager at Hall & Woodhouse is "We are making progress I believe with the disposal of the pub and I should have a better update in about two weeks."



Photograph of Duncliffe Woods sent in by Jeremy Watson

Annual Diary 2017

All events are held at the Village Hall unless otherwise stated.

For Village Hall bookings please call
01258 821427 OR 07786 667796

June

- 2nd - Lunch Club @ 12:00
- 5th - Table Tennis Club @ 14:15
- 5th - Parish Council Meeting @ 19:00
- 7th - Table Tennis Club @ 14:15
- 7th - Zumba Dance Fitness @ 19:30
- 8th - Baby and Toddler Group @ 09:30
- 9th - The Blackmore Vale Art Group- Sue Smith "Flowers in Watercolour" @ 10:30
- 9th - Quiet Half Hour Prayer @ 12:00
- Methodist Church
- 11th - Village Quiz in aid of the Village Hall @ 19:00 British Legion Club
- 12th - Table Tennis Club @ 14:15
- 12th - Women's Institute- 'Summer is Icumen in' Anne Gray @ 19:00
- 13th - Garden Club "Echinacea & Rudbeckia" - Martin Young @ 19:30
- 14th - Table Tennis Club @ 14:15
- 14th - Mother's Union - Garden Party @ 14:30
- 14th - Zumba Dance Fitness @ 19:30
- 15th - Baby and Toddler Group @ 09:30
- 15th - Marnhull Yarners @ 13:30 Laburnum Cottage
- 16th - Marnhull POPPin Cafe @ 10:00
- 17th - Jumble Sale @ 10:15 British Legion Club
- 17th - Pre-loved Sale @ 10:30
- 19th - Table Tennis Club @ 14:15
- 19th - Marnhull Music Society Meeting @ 19:15
- 21st - Table Tennis Club @ 14:15
- 21st - Zumba Dance Fitness @ 19:30
- 22nd - Baby and Toddler Group @ 09:30
- 26th - Table Tennis Club @ 14:15
- 27th - Moviola 'Hacksaw Ridge' @ 19:00
- 28th - Table Tennis Club @ 14:15
- 28th - Marnhull Garden Club Outting to Mottisfont @ 19:30
- 28th - Zumba Dance Fitness @ 19:30
- 29th - Baby and Toddler Group @ 09:30

July

- 3rd - Table Tennis Club @ 14:15
- 3rd - Parish Council Meeting @ 19:00
- 5th - Table Tennis Club @ 14:15
- 5th - Zumba Dance Fitness @ 19:30
- 6th - Baby and Toddler Group @ 09:30
- 7th - Lunch Club @ 12:00
- 10th - Table Tennis Club @ 14:15
- 10th - Women's Institute- 'Mystery of the Maya' Chris Shaw @ 19:00
- 11th - Garden Club "Herbs & their Medicinal Properties" - Luzia Barclay @ 19:30
- 12th - Table Tennis Club @ 14:15
- 12th - Mother's Union - Helen Butler @ 14:30 Methodist Church
- 12th - Zumba Dance Fitness @ 19:30
- 13th - Baby and Toddler Group @ 09:30
- 14th - The Blackmore Vale Art Group- A.G.M and Drawing and painting for rest of day. @ 10:30
- 17th - Table Tennis Club @ 14:15
- 19th - Table Tennis Club @ 14:15
- 19th - Zumba Dance Fitness @ 19:30
- 20th - Baby and Toddler Group @ 09:30
- 20th - Marnhull Yarners @ 13:30 Laburnum Cottage
- 22nd - Fest and Flower Show @ 12:00 Recreation Ground
- 24th - Table Tennis Club @ 14:15
- 25th - Moviola 'La La Land' @ 19:00
- 26th - Table Tennis Club @ 14:15
- 26th - Zumba Dance Fitness @ 19:30
- 28th - Marnhull POPPin Cafe @ 00:00
- 28th - Marnhull POPPin Cafe @ 10:00
- 31st - Table Tennis Club @ 14:15

August

- 2nd - Table Tennis Club @ 14:15
- 2nd - Zumba Dance Fitness @ 19:30
- 4th - Lunch Club @ 12:00
- 6th - Tea Dance @ 14:00
- 7th - Table Tennis Club @ 14:15
- 7th - Parish Council Meeting @ 19:00
- 9th - Table Tennis Club @ 14:15
- 9th - Mother's Union - Members Coffee Morning @ 14:30 The jens
- 9th - Zumba Dance Fitness @ 19:30
- 10th - Baby and Toddler Group @ 09:30
- 11th - The Blackmore Vale Art Group - Drawing and Painting all day. @ 10:30
- 14th - Table Tennis Club @ 14:15
- 16th - Table Tennis Club @ 14:15
- 16th - Zumba Dance Fitness @ 19:30
- 17th - Marnhull Yarners @ 13:30 Laburnum Cottage
- 18th - Marnhull POPPin Cafe @ 10:00
- 21st - Table Tennis Club @ 14:15
- 23rd - Table Tennis Club @ 14:15
- 23rd - Zumba Dance Fitness @ 19:30
- 24th - Baby and Toddler Group @ 09:30
- 28th - Table Tennis Club @ 14:15
- 30th - Table Tennis Club @ 14:15
- 30th - Zumba Dance Fitness @ 19:30

NEW: You can now submit your events into a live calendar on the messenger website and they'll be added to this diary in the next issue!

Marnhull Messenger Grants

The Marnhull Messenger Steering Committee is delighted to announce that due to good management and careful stewardship of resources over the past decade, we have accumulated funds which we would like to offer to village organisations and societies.

The grants will take the form of donations for specific projects, events or items of equipment. Any Marnhull Organisation, Club or Society is invited to apply and will be expected to make a contribution to the same project.

Applications will close on August 31st 2017 and the successful grants will be announced by the end of September.

Your application should make a clear case for funding, the amount requested and your organisation's anticipated contribution to the project.

Send your application to Fiona Nelson, Marnhull Messenger Administrator – email administrator@marnhullmessenger.org.uk. Tel - 01258 821036
Ian Gall – Chairman, Marnhull Messenger Steering Committee

Royal British Legion



Please note that we have had to change the date of the jumble sale from Saturday June 3rd to Saturday June 17th. We have had a lot of donations of everything from clothes to bric-a-brac to furniture so come down and have a browse and solve all your Christmas present problems at a stroke

At the end of the month we will be holding our beer and cider festival or judging by last year a cider and beer festival. It opens on Friday June 30th with entertainment from Two Foot Moose and goes over to Saturday July 1st with the mellow sounds of Second Time Around in the afternoon and finishes Saturday evening with the ever popular Silhouettes and their take of some pop favourites of yesteryear. For non music lovers escape can be had to the marque on the rear patio. We need it to be a success if we are to keep doing it so please give us your support.

The plant/book sale was again slightly disappointing but thank to all who donated and helped plus the people who turned up we did manage to raise £92.60 for the Poppy Appeal. Not a fortune but every little helps as the saying goes.

Still time to enter the Village Quiz which is to be held in the Legion hall on Sunday June 11th at 7 for 7.30pm. Anybody can make up a team and enter, just turn up on the day. Don't forget though that if you win you have to organise it next year. This year the Music Club are the quiz setters so get your thinking caps on. The organisers can pick any Marnhull cause to be the beneficiaries and this year is it the Village Hall Refurbishment Fund.

It is a bit of a way off but on Saturday October 28th we will be holding another charity night. The fabulous Headland will be performing and the charity will be Marie Curie Nurses, a cause that deserves a lot of support I think everyone will agree. There will be a prize draw and hopefully a lot of money raised. More details nearer the time but make a note in your diary.

Lyn's bingo continues to attract a big following, it is held fortnightly on Mondays starting at 7pm. All proceeds go to the Poppy Appeal and a good time is guaranteed.

Between Bingo on alternate Mondays a few of us turn up for a game of crib. About 8.30 all abilities welcome from learners to Las Vegas card sharps. Its free and its fun so just turn up.

Still on the search for skittles sticker ups, if you are interested or know anybody who might be ring me on the number below. Most teams pay £20 for about 2 hours work, give me a call.

Branch business contact Jack Whitehead on 01258 820800 or email whiteheadjack51@gmail.com

Women's Institute



May is the month during which all Institutes in the country vote on which of the proposals suggested by members they would like our National Federation to take forward to Government. This year there were two resolutions and the one Marnhull voted to espouse involved the proliferation of microfibers in the waterways and oceans.

It came as a shock to many of us to learn that every time we wash any garment made from synthetic material, tiny fibres are loosened and taken out into the drainage system. Acrylics are worse than polycottons in this regard, and the biggest culprits are fleeces. Eventually the shed fibres find their way to the ocean where they constitute 85% of all the man-made materials found on the coastline. Naturally fish are likely to ingest these substances and a disturbing study carried out recently on fish sold for human consumption in Indonesia and in California found that 25% of their total gut content was plastic fibres. Overall, these microfibers are considered to be more harmful to ecosystems than larger debris such as plastic bottles, and once in the system they are almost impossible to remove.

What can be done? And what can the W.I. do to help?

- It could be possible to filter waste water at sewerage plants but this would involve enormous cost.
- Filters could be fitted to domestic washing machines but the problem of what to do with the waste collected in the filters remains. It obviously cannot be washed away so the only alternative is land fill.
- It might be possible to devise some sort of anti-shed coating for artificial fabrics in the production stage as long as manufacturers would cooperate.
- Some sort of nano-ball in a washing machine might be effective in attracting fibres but the question of what to do with the collected rubbish remains.

The WI can lend its voice to making the public aware of the problem and to encourage the return to clothes made from natural fabrics such as cotton and wool. We can work with environmental charities to persuade manufacturers of washing machines and synthetic fabrics to take this information on board. Looking round the hall last night it was clear that most people were wearing at least one garment made from a synthetic fibre; this problem is not going to be an easy one to solve nor will it be a quick process, and it will be expensive on many levels. But as one person observed, we did it with asbestos.

Next month our speaker is Anne Grey with a talk entitled "Summer is Icumen In" and don't forget the WI picnic on the Recreation Ground on Sunday 25th June between 3 and 5 pm. Bring your own chairs, picnic and family members for an afternoon of fun and games.

YV

Marnhull Pantomime

Well we are getting prepared for next year's performance, the script is written and the dates are in the Diary, 2nd, 3rd and 4th February 2018.

We also have a few events going on through out the year, we have a tea dance at the village hall on Sunday 6th August, with cream teas, music and raffle. Tickets will be on sale on 1st July from Robin Hill Store and Spar. Ticket prices: £4 per adult - £2:50 per child - £10 family (2 adults and 2 children). This includes a cream tea each.

Save the dates for our bingo evening on Friday 10th November at the village hall. Also our Cinderella Christmas ball on Saturday 9th December. More details to follow nearer the time.

We will also be at the Fest and Flower show so if you would like more information or would like to have a go at our Pantomime themed game please look for us.

Thanks for all your support and kind words we look forward to seeing you at the Fest and Flower show and then at the Tea dance.



MIKE NELSON PHOTOGRAPHY

www.mikenelsonphotography.co.uk

16 Burges Close, Marnhull, Dorset, DT10 1QQ

Tel: 01258 821036
Mob: 07944 162712

email: hello@mikenelsonphotography.co.uk

PRIVATE PIANO TUITION

By experienced teacher

Beginners to Avanced

All ages welcome

Tel: 01258 820 420

S.M.V.

Stalbridge & Marnhull Veterinary Surgery
Building 12, Gibbs Marsh Farm Stalbridge

Provides Stalbridge, Marnhull and the surrounding villages with a friendly, caring service for dogs, cats and other pet animals.

Plenty of free parking.

For an appointment please telephone

01963 548240

Free first consultation, worth £30, for all new clients

15% discount for the over 60s

www.smvets.co.uk

BLACKMORE VALE FOOT CARE
EST 2005

Professional Foot Care in your Home

Corns, calluses, problem nails etc.
Friendly, female practitioners

Foot Care At Home

01258 820203 email: gillian@bmvfootcare.co.uk
www.bmvfootcare.co.uk

PESTWRIGHT

THE COUNTY MOLE CATCHER

Complete pest control services
Friendly, reliable service
BPCA qualified,
Insured

Call Jim on
01963 362292

Happy Pets and Home Service

House Sitting
Pet Care
Garden Care
Painting & Decorating

Competitive Rates

Call Juliet: 07773 566425
01495 790906

Dorset Stone Memorials

Specialists in the manufacture of individual memorials in Stone, Slate, Marble & Granite

Our brochure is available to download from our website. We also supply other stone related products such as:

- Fireplace surrounds & hearths
- House plaques
- Pet stones
- Architectural stone products
- Garden ornaments



Contact: 01747 811602 (works) • 01202 698075 (office)
Email: sales@dorsetstonememorials.co.uk

www.dorsetstonememorials.co.uk

Peter Jackson Funeral Services at Henstridge

Independent Family owned and run
Funeral Directors
24 hour service
Private Chapel of Rest

Telephone: (01963) 362570

Accountancy Plus
Chartered Accountants and Tax Consultants (Dorset) Limited

- Quick Books & Sage Expertise
- Accounts
- Personal & Corporate Taxation
- Management
- Book-keeping.

01258 820709

Email: info@accountancyplusdorset.co.uk
Contact: Mr Kim Harden, FCA, FCCA
4 New Street, Marnhull DT10 1PY



From The Surgeries

From the Surgery

Adam Smith, a Paramedic has joined the team. Adam has worked extensively for South West Ambulance Trust and will be supporting the GPs with home visiting, urgent on the day appointments and working with our nursing and residential homes.

Our new Nurse Practitioner Pippa Bastable is currently in her induction training. Pippa will be working full time at Abbey View Medical Centre but will be covering for holidays and absence from time to time in Sturminster Newton. Dr Hilma Starostina is now a partner of the Blackmore Vale Partnership.

Please don't forget to take our short flu vaccine survey to help us plan for the flu season from September onwards. We are keen to hear your views on how the clinics run and suitable days of the week and timings. Please take a few minutes to answer three questions, either in the surgery or online at www.sturminstersurgery.co.uk, under 'News'.

The mobile Breast Screening Unit is now at Abbey View Medical Centre. They will be seeing patients until approximately the start of September. All eligible Blackmore Vale Partnership patients will receive appointments in the post to attend.

Stalbridge Surgery

In May 2016 Dr Clayton of Stalbridge Surgery announced that he was actively looking to leave the Surgery after 24 years.

Earlier this year, a merger was proposed between Stalbridge and the Blackmore Vale Partnership, however this has now been placed on hold and currently it has not been possible to find anyone who wishes to run General Practice medical facilities from the premises in Station Road.

This situation, which is not unique to Stalbridge, raises the very real possibility that the Surgery will close. Whilst the timescale is uncertain, this is unlikely to happen for at least 12 months during which time Stalbridge Surgery will continue to provide General Practice services to the registered patient population.

Marnhull Music Club

Gentlemen's Choice, presented by John Borthwick, had something for (almost) everyone. We had Holst, Handel, Chopin and Bach, with Mozart, Albonini and Wagner representing the more classical themes. Then the John Dunbar theme by John Barry, Danzon no: 2 by Marquez (new to me, very foot-tapping), and Misty sung by Johnny Mathis, which recalled our younger days for some of us. Then there was a song about the Irish Famine of 1840, but composed in 20th century, Sandy Denny singing Who knows where the time goes?, Achy Breaky Heart by Billy Ray Cyrus, and Alfie Boe's wonderful singing of Bring him home from Les Miserables. Some of the pieces were new to many of us, and some were old and well-loved favourites. And also classic – The Piano Teacher by Peter Cooke and Dudley Moore, which is still funny after all these years.

We have our Music Club Dinner on 11th May, and the next Presentation is by Alan Thomas on 15th May. Visitors are always welcome.

SB.

Village Hall Hire Charges For Weddings & Parties

9 a.m. to 1 p.m....£30.00 2 p.m. to 6 p.m.... £30.00
6 p.m. to 11.30 p.m. (midnight on Sat and Sun).... £50.00

Wedding hire... £150 per day
Booking Officer: 01258 821427



News from the Nick.
Combating crime in your neighbourhood
PC 2146 Phil Sugrue
07500 816 258



No crimes to report this month! Other news to report - a suspicious tradesman was reported in the village offering gardening work. Be vigilant and do not buy goods or services from doorstep sellers.

PLEASE BE VIGILANT AND REPORT ANY SUSPICIOUS ACTIVITY!

Crime Prevention

Over the past few weeks there have been a number of breaks and attempted breaks to garages and sheds in the North Dorset area. Please keep your outbuildings secure and keep details of valuable equipment including serial numbers and any identifying marks. Photographs can be useful too.

Think about the equipment that you store in your sheds and garages and ask yourselves a few questions. How can I protect my property - is my shed/garage lock robust enough? Would outside light sensors be beneficial? Do I need an alarm? How much would it cost to replace? Some items are irreplaceable.

Details of crimes are circulated on social media (Facebook) and Dorset Alert. Dorset Alert is a community messaging service that keeps you up to date, via email, with crimes, vehicles of interest, appeals, events, as well as alerting you to suspicious incidents in your local area. If you would like to receive this service you can register on line at www.dorsetalert.co.uk

You can follow us on our Facebook page [facebook.com/NorthDorsetRPT](https://www.facebook.com/NorthDorsetRPT)

If you have any issues that you would like to discuss with us or if you would like to introduce yourself, we hold our monthly surgeries on the 1st Thursday of the month at the Post Office from 11.30am-11.45am and at The Spar from 12noon-12.15pm.

PCSO 5352
Mandy Robinson
Sturminster Newton Rural NPT



Dorset Farm Appeal Fundraising

The Cotswold Way certainly presented a challenge as did the constant cold East head wind!

But, over 7 days I walked the 102 miles along the western edge of the Escarpment - following the way markers through native woodlands, across vast arable lands, passing through Cotswold stone village and historic market towns as well as meeting a number of other hikers from as far afield as New Zealand and Canada.

The traditional end to this trail is the West Door of Bath Abbey - duly reached on schedule.

On behalf of the Countryside Restoration Trust a very sincere thank you to everyone who so generously sponsored me. All proceeds are donated to the Dorset Farm Appeal.

For more information refer to www.countrysiderestorationtrust.com
Elaine Spencer-White

HOME CARE

Helping keep your independence whilst in your own home



ANGEL HOLISTIC CARE

We provide flexible tailored packages of care and services to suit your individual needs

01258 821640

07769 157553



COMPLEMENTARY THERAPIST, MAR

AROMATHERAPY, FACIALS,
MASSAGE, REFLEXOLOGY & REIKI

Relaxing treatments tailored to individual needs.

GIFT VOUCHERS AVAILABLE

Call Mary Colohan on
Marnhull (01258) 821422

Natural Beauty



Mobile Beauty Therapist

Beauty Treatments

in the Comfort of your own Home

MANICURE / PEDICURE
WAXING • SHELLAC
FACIALS • MASSAGE
LASH / BROW TINTING
PAMPER PARTIES

For More Information Call:

07920 269664

E: kellybrady@hotmail.co.uk
W: www.kellynaturalbeauty.co.uk

LAVENDERS GREEN
Complementary therapies

Aromatherapy
Therapeutic massage. Reflexology.
Reiki and Yoga tuition

Tanya Green ITEC
Traditional Yoga Association
Tel. 01258 820410
m. 07729 301387

Register of Exercise
Professionals
tanyaagreen@btinternet.com



3rd Friday of each month

10-12 noon, Marnhull Village Hall
COME & ENJOY FRESH FAIRTRADE COFFEE
OR TEA, BISCUITS or HOMEMADE CAKES

Meet old friends, make new ones
Put the World to Rights!

Read the papers, do a crossword, play cards,
dominoes, or just sit, chill & chat

All welcome - we would love to see you

Contact Linda 01258 820131



The Marnhull POPPIN Café is a non-profit making community project.

Marnhull POPPIN Café

The café will open on the fourth Friday of the month in JULY (FRIDAY 28th JULY) NOT on the third Friday of that month.

All other dates for this year will be on the third Friday of each month as usual.

Marnhull Lunch Club

The lunch club was a happy place in May, when one of our ladies reached her 100th birthday. She was presented with a lovely bouquet of flowers and in her little speech at the end she gave thanks to the lunch club for allowing her to come, she lives in Sturminster and said that she had never been made as welcome anywhere else.

We also welcomed two new members and 3 visitors, two of whom had come over from Brittany!! they had read about the lunch club in the Marn'll messenger and as they might be relocating back to Dorset, came to try us out.

We were all pleased to hear that Peter Colebrook was back home again and we look forward to seeing him again soon.

Several of our members are still poorly, either at home or in hospital and we send our good wishes to them all.

The next lunch is on the first Friday in June and we now have a few places available for anyone who would like to join us

Norval Faro

Village Hall - Thank You

Just wanted to say a BIG THANK YOU to all the people who donated, helped and supported the village hall bingo. We raised £589.53p for the village hall funds. We would not have been able to have done it without you, so again thank you.

Tina

The Barn Bed & Breakfast

Quiet, Comfortable and Friendly
on the edge of the village

Hillside
Marnhull
01258 820912

www.thebarnbedandbreakfast.co.uk

THE OLD MALHOUSE

BED & BREAKFAST
& SELF CATERING

Carraway Lane
Marnhull

01258 821514

07773329510

www.theoldmalhouse.uk.com

PGM

Pauline Mitchell

Soft Furnishing,
Dressmaking
&
Alterations

01747 853509

20 years experience
The Chimes,

3 St. Rumbolds Road,

Shaftesbury,

SP7 8NE

The Old Bank Bed & Breakfast

*Comfortable, friendly,
Family Home
In the centre of the village*

The Old Bank,
Burton Street, Marnhull
01258 821019
enquiry@theoldbank-marnhull.co.uk

PRIMROSE COTTAGE

Burton Street, Marnhull, DT10 1PP

A romantic retreat

Luxury Holiday Cottage for two
Short Breaks or Weekly Lets

Please contact
Rachel Oxford: 01258 820850
www.primrosecottagedorset.co.uk

THE CROWN INN at Marnhull



A beautiful 16th century coaching inn, notably
featured in Thomas Hardy's 'Tess of the
d'Urbervilles'

Delicious home cooked food, Badger real ales
& cosy country B&B

Crown Road
Marnhull
DT10 1LN
01258 820224

Info@crowninn-marnhull.co.uk
www.crowninn-marnhull.co.uk



THE LEGION CLUB

FIRST CHOICE FOR:

Club and Society venue
Birthday parties
Wedding and family celebrations
Dinner dances
Fund raising events
Free Skittle alley

EXCELLENT FACILITIES:

Adaptable arrangements
Meeting room
Bar
Barbecue
Safe garden
Pool table/darts

FUTURE EVENTS

Art classes every Monday and one Thursday.

Short mat bowls Friday 2 to 5pm.

Sat. June 3rd - Replicas Sat June 10th - Just Bertie Mon. June 12th - Bingo 7pm
Sat. June 17th - Alto Sat June 24th - Barrel House Band Mon. June 26th - Bingo 7pm

Beer Festival

Fri. June 30th - Two Foot Moose

Sat. July 1st - Second Time Around in the afternoon & The Silhouettes in the evening.

Entry free to members others £2 on entertainment evenings

The CLUB may be booked for private functions at reasonable rates.

To arrange viewing, check availability, discuss your requirements or apply for membership contact Tony on 820397 or E-mail whiteheadjack51@gmail.com

DORSET MOVIOLA in association with MARNHULL ENTERTAINS presents **Hacksaw Ridge**



The true story of Private first class Desmond T. Doss (Andrew Garfield), who won the Congressional Medal of Honour despite refusing to bear arms during WWII on religious grounds.

Doss was drafted and ostracized by fellow soldiers for his pacifist stance but went on to earn respect and adoration for his bravery, selflessness and compassion after he risked his life -- without firing a shot -- to save 75 men in the Battle of Okinawa.

In Marnhull Village Hall
Tuesday 27th June at 7.30pm

Doors and licensed bar open 7.00 pm

Tickets: £5.00

Available from:

Robin Hill Stores - 01258 820959
or Marnhull Stores - 01258 820116

The Marnhull Flower Show & Fest Saturday 22nd July Children's competitions

Cooking, gardening and arts and skills classes for all the three age groups; from making sweets to a vegetable creature. How about a digital photo? Or even decorate a bird table.

Ever tried hand printing? Chocolate crispy cakes? Why not enter the miniature garden; always popular. Grow something, anything. See you there! Have fun doing stuff. Schedules available now.

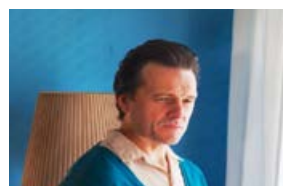


THE EXCHANGE

Box Office: 01258 475137
www.stur-exchange.co.uk



REAL ALE & CIDER FESTIVAL
MUSIC ALL WEEKEND AND OVER
20 REAL ALES & CIDERS
2ND - 4TH JUNE FREE ENTRY



BURTON
PERFORMED BY RHODRI MILES
THURSDAY 15TH JUNE
8PM TICKETS £11



MARTY WILDE & THE WILDCATS
BORN TO ROCK & ROLL
SATURDAY 17TH JUNE
7:30PM TICKETS £20



CHAMPIONS OF ROCK
THE ULTIMATE QUEEN TRIBUTE
FRIDAY 23RD JUNE
7:30PM TICKETS £18/£17



THE CHRISTIANS
RENOWNED FOR AN ENDLESS STRING OF
SOULFUL HITS
SATURDAY 1ST JULY
8PM TICKETS £19



RHYTHM OF THE DANCE
THE NATIONAL DANCE COMPANY OF
IRELAND
SUNDAY 16TH JULY
7:30PM £22



A CELEBRATION OF NEIL DIAMOND
WITH WAYNE DENTON
FRIDAY 21ST JULY
7:30PM TICKETS £13.50



JOE SWIFT
A MAN ABOUT THE GARDEN
SATURDAY 29TH JULY
7:30PM TICKETS £14

Treasure Hunt

Classic Cars At The Royal British Legion

Come and see a collection of lovely classic cars at the Marnhull Royal British Legion on Sunday 20th August 2017. From 1pm

Also anybody who has a classic car and would like to enter the treasure hunt could they please contact: Keith / carol collis 01258 820766

Tyre rolling competition - Craft stalls/raffle - BBQ

Beer - Wine - Soft Drinks - Tea - Coffee.

Prize for winner of treasure hunt

Prize for winner of tyre rolling competition.

All proceeds to Spinal Injury Association and the Poppy Appeal

Thank God for Marnhull

Calling all those who appreciate the community in which we live!

On Sunday July 9th, at 10.00 am, there will be a service to celebrate the life of Marnhull, with all that the village and community means to us. We especially welcome all those who share in and shape the fun, companionship and mutual interest of our clubs, associations, enterprises etc.

Don't keep it a secret!

We have a village to celebrate!!

Thank God for Marnhull!!!

BARTLETT CONTRACTORS LTD

AGRICULTURAL CONTRACTORS
COMPLETE AGRICULTURAL CONTRACTING SERVICE

CIVIL ENGINEERS: HEAVY AND RURAL
OPERATED PLANT HIRE, HAULAGE, LANDSCAPING, FENCING,
LAND DRAINAGE, HEDGE TRIMMING,
LAKE AND POND CONSTRUCTION

TRACK REGENERATION
POTHoles TAKEN OUT IN ONE PASS,
QUARTER THE PRICE OF RESTONING THE SURFACE. CEMENT
CAN BE INCORPORATED



SUPPLIERS OF OOLITIC LIMESTONE, TURF, TOPSOIL,
SAND, GRAVEL, SCALPINGS AND MORE

01258 472419

Web: www.bartlettcontractors.co.uk



All aspects of building work undertaken including:

- **Extensions**
- **New Builds**
- **Roofing**
- **Renovations**
- **Loft Conversions**

Camelot Builders Ltd
Farm Office
East Lawn Farm
Lawn Crossroads
Gillingham
Dorset SP8 5QN
www.camelotbuilders.co.uk

Tel: 01747 835422
email: info@camelotbuilders.co.uk



GENERAL BUILDER STONEMASON reliability guaranteed

Extensions ~ Garages ~ Garden Walls ~ Repointing ~ Chimneys
Lead Work ~ Rendering ~ Plastering ~ Patios

Many satisfied customer references if required
Probably the cheapest around
No VAT

Ring Barry 01258 820010 (evening) 07966 550081 (day)
5 Hardy Close, Marnhull DT10 1LG

Dry Stone Walling and Paving

All types of stone walling undertaken
Landscaping
Fencing



Patrick Houchen
DSWA member
CIS registered
01963 371123
07791588141

www.yenstonewalling.co.uk



PLUMBWOOD

for all domestic plumbing
From tap repairs to new
bathrooms

Tiling and Woodwork projects
also undertaken

Call Tim or Helen Cronin:
01258 820520 / 07780 673053

R&S LEWIS JOINERY

We design & make
fitted wardrobes
bookcases & cupboards.

Hardwood windows
& doors

Ham Lane Marnhull
01258 820467
Workshop 01963 363862

vale electrics

Reliability Guaranteed

8 Plowman Close
Marnhull

Dorset DT10 1LB

T: 01258 821420

M: 07740403033

E: valeelectrics@hotmail.co.uk



WORD of MOUTH HOME IMPROVEMENTS PROFESSIONAL, RELIABLE, LOCAL

- Painting – interior/exterior
- Decorating
- General building maintenance
- Guttering – clearing/replacing
- Roof repairs
- Bricklaying
- Re-pointing
- Carpentry
- Tiling
- Paving
- Window replacement/installation

Please call Andy for a free quote

Marnhull 01258 821427

Mobile 07939 196384

Email: yaffle1@hotmail.co.uk

For more information please visit:
www.marnhullstone.co.uk



SUPPLIERS OF NATURAL AND CUT STONE:

RANDOM DRESSED
SAWN SPLIT
CHISEL FACED ASHLAR
WINDOW SURROUNDS
DECORATIVE WALLS



FIREPLACES

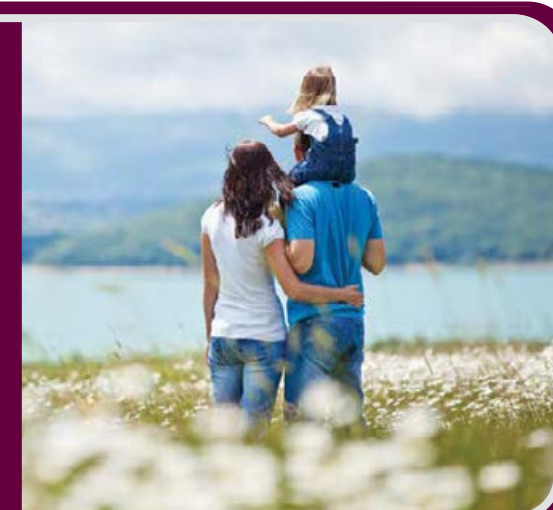
ASHLAR

FLOORING

Dean Harris (Quarry Manager): 07771 684647
Office: 01258 472419
Whiteway Quarry, Whiteway Lane, Marnhull,
Dorset, DT10 1NQ

Far MORE PEACE OF MIND

At Farnfields Solicitors we
always put your interests first,
that's why we have been in
business since 1936.



At Farnfields Solicitors you can always expect a warm and friendly welcome combined with a high level of service, dedicated expertise and transparent straightforward pricing. You will find, at every stage, that we put our clients' interests first. That's why we have been in business since 1936.

All in all, when you choose Farnfields Solicitors you can expect to receive far more peace of mind.

To find out more e-mail: info@farnfields.com or visit www.farnfields.com

Farnfields
SOLICITORS



GILLINGHAM 01747 825432 | SHAFTESBURY 01747 854244 | STURMINSTER NEWTON 01258 474270 | WARMINSTER 01985 214661

Thoughts from the Methodist Minister

In early June we will be voting again – this time in the General Election. ‘Oh no! Not again!’ Was this your response to the news of the election? Voter fatigue, suspicion of the motives behind the election, or fear for the future of our country has led many people to feel fed up with politics!

Much is being said about the need for strong Government and strong leadership. We do well to ask what this means for us? Whilst a strong Government may be desirable or even necessary, there are models around the world which rightly attract widespread condemnation. A ‘strong’ Government is not in and of itself a good thing. In modern democratic systems overwhelming Parliamentary majorities reduce the need for Government to listen and respond to other opinions.

We need to reflect not only on the power and strength of any given authority, but also its nature and virtue. One of the most famous and challenging verses in the Old Testament reminds us of the nature of good leadership... ‘He has shown you, O mortal, what is good, and what does the Lord require of you but to do justice, and to love kindness, and to walk humbly with your God?’ (Micah 6:8) The verse from Micah commends a model of leadership that has at the centre, justice, compassion and humility before God.

I am glad that Churches Together in Shaftesbury have organised an election ‘Hustings’ on behalf of the whole community which will allow us to meet those who seek to represent us in Parliament. Four candidates will be present and there will be opportunity to hear their responses to questions submitted by members of the local community in N. Dorset. None of the Churches has a vested interest in a particular party, but together we can ask questions and listen to the responses of those who seek to hold authority in our name. At the time of writing the ‘Hustings’ will be held on Saturday 3rd June, 7.00pm at St James’ Church, St James’ St, Shaftesbury, SP7 8HG.

It might seem hard to believe right now, but in just a few weeks the election will be over! There is a danger that whatever the outcome, the average person might well see this as the moment to leave the politicians to get on with it.

Whatever mandates our politicians might believe themselves to have, as people of faith we also have a responsibility to seek what is good, to speak out for what is right and to challenge what we recognise as harmful and unjust. Whatever the shape or form of our new Government, Christian citizens will have a role to play in seeking to influence and shape the kind of society that we all live in. We will pray for our leaders and hold in our mind the words of Jesus, who when questioned about political allegiance replied, ‘Give to Caesar what is Caesar’s... and to God what is God’s.’ (Mark 12. 17)

Peace,

Rev Paul Arnold

Marnhull Churches Sunday Services

Anglican Church of St. Gregory the Great, New Street
8.00 – Holy Communion
10.00 – Parish Eucharist
Weekday services as advertised
www.StGregorysMarnhull.org.uk

Catholic Church of Our Lady, Old Mill Lane
9.30 - Mass
6.00 - Mass
www.marnhullandgillinghamrc.org.uk

Marnhull Methodist Church, Burton Street
10.00 - Morning Service

St. Gregory's Church



Services & Events for June 2017

Please note: Morning Prayer is now held daily
Tuesday to Friday at 8.00 in the Hussey Chapel

Sunday 4th - Pentecost: Whit Sunday
8.00 – Holy Communion [said]
10.00 – Pilgrim Vale Eucharist at St Mary’s, Sturminster
(shared service to conclude the Pilgrimage week)

Wednesday 7th
09.00 - Children’s Service led by St Gregory’s Primary School
(coffee served before and after service)
11.00 Holy Communion

Sunday 11th - Trinity Sunday
08.00 – Holy Communion [said]
10.00 – Parish Eucharist

Wednesday 14th
09.00 - Children’s Service led by St Gregory’s Primary
(coffee served before and after service)

Sunday 18th - First Sunday after Trinity
08.00 – Holy Communion [said]
10.00 – Parish Eucharist

Wednesday 21st
09.00 - Children’s Service led by St Gregory’s Primary
(coffee served before and after service)

Sunday 25th - Second Sunday after Trinity
08.00 – Holy Communion [said]
10.00 Sung Eucharist

Wednesday 28th
09.00 - Children’s Service led by St Gregory’s Primary
(coffee served before and after service)

Summer Songs of Praise.

Drop into St Gregory’s any time up to June 18th and note you favourite hymn on the form provided. Then come along at 6.00 pm on June 25th to join in ‘the big sing’ – and see whether your choice is one of the most popular which has been chosen. Refreshments afterwards

www.stgregorysmarnhull.org.uk

From the St Gregory Registers

Baptism

We welcome Evelyn Shirley Suzanna Rietti, daughter of Adam and Karen Rietti, of Redditch, Worcestershire, who was baptised into the Church on February 26th.

.....
QUIET HALF HOUR PRAYER
9th June at Methodist Church
12.00 -12.30pm - ALL WELCOME

Our Lady's Church



Catholic Church of Our Lady, Marnhull
& St. Benedict's, Gillingham -
www.marnhullandgillinghamrc.org.uk
Sunday Masses - 9.30am & 6pm (Marnhull) / 11am (Gillingham)

Significant dates in June

3 – Vigil of Pentecost (Solemnity)
4 – Pentecost Sunday (Solemnity)
The sacred Easter period concludes with Pentecost Sunday, when the gift of the Holy Spirit to the Apostles is commemorated, marking the birth of the Church and its mission to all tongues, peoples and nations.
5 – Saint Boniface, Patron of the Diocese of Plymouth (Solemnity)
11 – The Most Holy Trinity (Solemnity)
Celebrates the three Persons of God: the Father, the Son and the Holy Spirit.
18 - The Most Holy Body and Blood of Christ (Corpus Christi) (Solemnity)
Celebrate the Real Presence of Jesus Christ in the Eucharist.
22 – Saint John Fisher and Saint Thomas More, Martyrs (Feast)
23 - The Most Sacred Heart of Jesus (Solemnity)
Devotion to the Sacred Heart is a devotion to Jesus in his human nature, referring to the heart as the seat of the emotions.
24 - Nativity of Saint John the Baptist (Solemnity)
28 - Vigil of Saints Peter and Paul, Apostles (Holy Day of Obligation, Solemnity)
29 – Saints Peter and Paul, Apostles (Holy Day of Obligation, Solemnity)

Spiritual Development

The highly acclaimed series of talks (CDs) by Fr Dennis McBride, entitled ‘Jesus and the Gospels’ is currently running in the Chapelroom of Our Lady’s Church on Tuesday evenings at 6.30pm. It’s free and all are welcome. Each talk stands alone, so you can join in at any stage. Details are on the Parish Website (www.marnhullandgillinghamrc.org.uk)

Parish People

The funeral of Francine Courtney de Gheselle took place at St Benedict’s on 11 May; the funeral of Michael Garvey took place at Our Lady’s on 15 May; and the funeral of Digby (Digger) Hague-Holmes took place at St Osmund’s, Salisbury on 19 May. May they rest in peace

Eight parish children (3 girls and 5 boys) will be taking their First Holy Communion at St Benedict’s on Sunday 18 June (Corpus Christi).

Please come and join-in the Churches Together Social Evening at the Crown Hotel in Marnhull, on Wednesday 21 June (from 6.30pm).

Congratulations to our parishioner Andrew Donaldson, who has been reappointed Mayor of Sturminster Newton for a second term.

Parish Outing

There will be a coach trip to Downside Abbey & Tyntesfield House on Friday 16 June. If interested, please sign-up (lists in both church porches).

Catholic Parish History

There is to be a reprint of the yellow booklet ‘Steadfast in Faith’, which records the history of our Roman Catholic Parish and its two Churches (Our Lady & St Benedict). If you can add any further information or photographs, please email them to ericaling@btinternet.com, or ring 01258 472392.

Thank you.

The Methodist Church



Craft Club News

‘A DEMONSTRATION OF WILLOW WORK’

Everyone is very welcome, so do come along!

**10am Thursday 8th June -
Methodist Church Hall**

HIRE THE HALL!

The Methodist Church Hall is a good place to hire for family parties and social or other events for individuals, clubs, societies and classes. It is easy to find and parking is available. Rates are reasonable and bookings can be made by contacting Mrs Marlene Plowman on 01258 820869.

Churches Together

Social

The Churches Together Social Evening will be held at the Crown Hotel in Marnhull, on Wednesday 21 June, from 6.30pm. Please come along and join us for drinks and nibbles. The village Harvest Festival supper will be an evening of ‘Pies, Peas and Poetry’ in the Village Hall on Thursday 28 September. Details to follow.

World Peace Prayers

Churches Together in Marnhull continue to pray for world peace. The next gatherings will take place after Easter, as follows:

9 Jun	Our Lady’s Church	Fr Martin Budge
14 Jul	Methodist Church	Rev Paul Arnold
11 Aug	St Gregory’s Church	Canon Tony Wilds
8 Sep	Our Lady’s Church	Fr Martin Budge

Interfaith Calendar

26th-28th June Eid al Fitr. This is a 3-day Islamic feast marking the end of Ramadan. It is a festival of thanksgiving to Allah for the month of Ramadan and involves wearing the finest clothing, saying prayers and fostering understanding with other religions.

Committee

The next Churches Together Committee meeting will be held at Tapshays Barn on 7 September, at 2.30pm.

St. Gregory’s Church – Organ Recital

Jonathan Melling (All Hallows-by-the-Tower, London)
7.00pm – 8.00pm Friday 9th June

Jonathan Melling is the Organist and Director of Music at All Hallows-by-the Tower, London, where he has presented over 500 recitals. He has also performed in the USA, many parts of Europe and throughout the UK.

He is a wonderful player and we are extremely fortunate that he is to return to St.Gregory’s this year and present a varied programme including music by Bach and Widor.

Programmes £6 at the door – one not to be missed!

Marnhull Garden Club



Clive Whitbourn from NT held his audience fascinated with his talk about Hod and Hambledon Hills – which most/some/none of us have climbed. They are National Nature Reserves and also SSIs. He started with a slide of a beautiful painting pre-1914 showing the landscape, fields, copses and woodland – probably the larger trees being elms. The onto slides like X-ray – actually photos on glass plates taken by the photographer hanging over the sides of a bi-plane in 1928! He told us of the pre-history of both sites, inhabited well before the Iron Age, and in the case of Hod, the only site with a Roman fort inside an Iron Age one. Normally the Romans just erased everything. Neither hill has been fully archaeologically excavated in recent times. The forts are part of a series along the Dorset high ground – from Maiden Caste to Banbury fort to Pilsden Pen and the highest point in the county, Lewesden Hill.

He then went onto the wildlife of the area – particularly the butterflies which flourish on the hills, mainly because the scrub and grass are kept down by cattle (sometimes White Park cattle descended from the Chillingham herd, who are semi-wild) in summer and sheep in winter, though recently heavy machinery has had to be used to deal with cotoneaster and other invasive species, mainly introduced by seeds dropped by birds. The area is also home to many varieties of orchid, and the slides of both these and the butterflies were magnificent. There are birds and insects which most of us probably never notice on our walks, all melding together to give a very special landscape. There are guided walks on the Hills – details on NT website

There are many problems involved in keeping these sites, not all human-related. The chalk landscape is subject to slippage, the rabbits dig into archaeological sites – and sometimes bring interesting items to the surface. Too many feet wear away the surface, and night-hawks (metal detectorists) dig holes indiscriminately, and climate change is also having an effect.

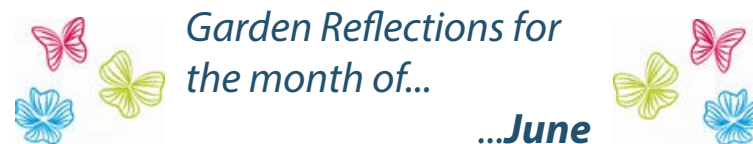
It was a splendid talk, and many of us wished he could have stayed longer. The next meeting is on 13 June "Echinacea and Rudbekia", and visitors are always welcome. There are also outings to Common Farm Flowers Garden Tour 6th June and Mottisfont Abbey NT 28th.0

SB

Mother's Union

In May we held our annual coffee morning which was an enjoyable and successful event. Thank you very much to all those who helped in anyway and of course to all those who attended.

The June meeting is our members' garden party at the home of George and Diana.



Rhubarb! Rhubarb!

This has to be one of the strangest things that grows in our gardens! Botanically it is classed as a vegetable and related to the dock family (note this one for the next quiz!) However despite its tart taste it is considered a fruit, but let's not lose a good excuse to add sugar and lashings of hot custard.

Even the word "rhubarb" is the butt of many jokes and derives from the Latin expression rheum barbarum, the barbarian from the banks of the river Rha (Volga), but the large-leaved Siberian native was a welcome immigrant to the Yorkshire Dales. An old favourite war time joke went as follow;

A town boy and a country boy were playing together in the latter's garden when the urban lad suddenly said, "What does your dad use all that manure for?" "We put it on our rhubarb," replied the country lad. "That's awful" said the town boy "We put custard on ours."

In 2010, there was jubilation in the little known "Yorkshire's Rhubarb Triangle" with the news that the region has been granted Protected Designation of Origin (PDO) status by the European Commission. It was the 41st British product to be added to the list along with Cornish Pasty, Dorset Blue Vinney and Yorkshire Wensleydale Gromit!!!! to name but a few.

The Triangle's capital is Wakefield (somewhere t'up North), where there is even a pub called the Rhubarb Triangle...we must look out for that one on our travels. A traditional Rhubarb festival is held there every February, with Celebrity Chefs showcasing their own special Rhubarb dishes, this year Rhubarb Sausages were on offer! Though originally much larger, the area today measures just 9 square miles, though I am not sure how that is calculated into a triangular shape, maths was never my forte.

After the crops had two years in the fields without being harvested and following a frost, the Rhubarb roots would be moved into sheds in the November and kept completely in the dark. Without daylight, this forced the Rhubarb to grow stalks up to 2 feet in length. Traditionally, the pickers 'pulled' the stalks by candlelight as any daylight might slow any further growth on the plant

The demise of Rhubarb started after the second World War when more exotic fruits became available and war time babies had simply had enough of it, however in it's hey day, regular tourist trains were run from London to the Rhubarb Triangle appropriately called Rhubarb Specials.

So that brings me to my own little patch of Marnhull Rhubarb that I put in last year. On closer inspection they appear to be growing flower heads! So after consulting t'internet experts opinion, I learn that my plants are stressed! STRESSED...? I have dealt with many stressed customers in my time but never stressed Rhubarb! Anyway due to our warm dry spring, the plants are merely attempting self preservation and it does no harm to simply snip off the flower heads and give the plants a jolly good mulch!

Marnhull garden club.

PARTNERSHIP FIRE AND SECURITY

Contact

Tel: 01747 858888

enquiries@partnershipsecurity.co.uk



TONY WILLIAMS ACCIDENT REPAIR



01963 365733

**BRING IN THIS ADVERT
TO GET A 10%
DISCOUNT ON LABOUR**



Friars Moor Veterinary Clinic is a professional, dedicated and friendly team providing excellent care in the best interests of you and your pets.

24 Hour Emergency Care Consultations by appointment

Sturminster: 01258 472314

Shaftesbury: 01747 850500

Blandford: 01258 472160



www.friarsmoorvets.co.uk



DORSET SCIENCE & TECHNOLOGY
CENTRE OPENING SOON IN
STURMINSTER NEWTON

SPACE THEMED
JEWELLERYSELECTION OF GENUINE
METEORITESSPACE THEMED
3D PUZZLESMETEORITES & FOSSILS
SPACE THEMED JEWELLERYAND MUCH MUCH MORE...
GIFTS FROM 99p

EDUCATIONAL TOYS

MINERALS & GEMSTONES

AFTER SCHOOL CLUBS

3D PLANETARIUM

ONLINE VIDEOS

DINOSAUR ZONE

TECHNOLOGY ZONE

5% OFF

USE COUPON CODE
MARNHULL

St. Mary's Catholic
Primary School

**A warm, friendly
primary school
that welcomes
children from all
faiths and none**



Come and see what we can offer you and your child
www.stmarymarnhull.dorset.sch.uk



St. Mary's Explorers
Preschool

**Early Education Funding
for 3 years +**

**Old Mill Lane, Marnhull,
DT10 1JX**

01258 820417



St. Gregory's C.E.VA Primary School

Children were asked to come back to school for their first day after Easter dressed in a Fairy Tale character and we had Snow Whites, Cinderellas, Peter Pans, Gingerbread Men, Little Pigs. A surprise was waiting for them when 'Once upon a time' our theme for this term was launched with a live and exiting theatre in the school hall. We had three professional actors performing 'The Greatest Fairy Tale Ever Told' with the Evil Queen doing away with all the Princes and leaving it up to the three little pigs to stop her incorporating loads of different fairy tale into the story. Afterwards all of our classes participated in drama workshops.



Rabbits class have been learning about The Three Billy Goats Gruff as part of their whole school 'Once upon a time' topic. The children have created their own version with new characters and used traditional story language. They had an enjoyable trip to Bere Marsh Organic goat farm in Shillingstone where they saw lots of baby goats and even got to pet a billy goat called Hunky. It was interesting finding out about how goats live. They also led a church service about our school value of Honesty. They performed a play about the Bible story of Zacchaeus and created an acrostics poem about being honest. The children did a fantastic job of reading the poem and prayers they had written.

Squirrels class have really enjoyed having a specialist teacher in to work with them on forest school skills. They have created natural art and built fantastic shelters, such as this one.

Children in Year 4 and 5 based themselves at Shillingstone Railway Station. The staff at the station had kindly agreed they could spend some time exploring the site when not cycling. All of the children cycled on the railway and over half completed the whole route to Blandford and Sturminster Newton and back again. Two children raised over £200 each for Asthma UK and St Gregory's swimming pool



Our Year 6 children celebrated the end of their national tests with a visit to Mrs Field's small holding for a barbecue and outdoor activities. Later this month along with our Year 5's they will be travelling to Torquay for a three day stay at Barton Hall where they will be having a go at archery, fencing, canoeing, mountain biking and many more activities.

Some of our Year 2 and Year 3 children had the opportunity to join other schools in the Gillingham Cluster for a multiskills session run by the sports leaders at Gillingham School and later this month some of our Year 3 and Year 4 children will be taking part in the Tennis Festival at Sturminster Newton. All of the children are enjoying their sessions in our school swimming pool this half term and the weather has been kind to us so far although the temperature in the pool has been in the high 20's.

Once again there have been lots of things going on at St Gregory's this half term and we look forward to the next one which promises to be even busier.

St. Mary's Catholic School



The excitement has hit fever pitch at St Mary's with the arrival of our baby chicks. The children in Key Stage One have been caring for the eggs in the incubator since returning from Easter and this week they were lucky enough to be in the classroom as the first two hatched! The morning started with lots of squeaking and movement coming from the eggs before the first chick made a bid to escape and broke through the shell! The children watched in awe as the chick pecked his way through the shell before finally emerging, a little unsteadily, into the incubator. The chicks will stay in the incubator until they are ready to face the wide world!



The children spent the period of Lent doing chores in return for donations to our chosen charity, Mary's Meals. They were each given a money box to fill with coins and we managed to raise £220 in total! The money will go towards helping children around the world who are less fortunate than ours. We have also managed to fill around 10 rucksacks for the same charity. We are very proud of the efforts they have made!

Our Year 2 and Year 6 children have been busy over the last few weeks sitting their SATs assessments. We have been so impressed with the work they have put in and of the way they approached this in a calm and mature manner. I am sure they have done their absolute best. Well done to all of them; they have made us very proud!

Our new after school club has got off to a good start. The children have been busy creating art work to decorate the room, and cooking. They even had time to run a stay and play session so parents could join in the fun. Bright Sparks will be open until 6:00pm daily. Along with our breakfast club, this allows us to provide wrap around care from 8:00am to 6:00pm every day!

We have an 'open door' policy at St Mary's and prospective parents are welcome to call the school on 01258 820417 to organise a tour or just pop into the school office and take a look around. We have places for September and also have availability in our Preschool, St Mary's Explorers. We look forward to welcoming you to our school community.

St. Mary's Explorers

Preschool have been living up to their name this term and 'exploring' nature. Come rain and shine they've been enjoying the great outdoors.

Our theme this term is Growing, the children have enjoyed being wormologists! They were kitted out with watering cans, spades and magnifying glasses and set about collecting worms. They dug deep and found lots of wriggly worms. We shared the book 'Yucky Worms' and they learnt that worms are really important for the growth in our garden. They know that we really need the worms especially if we want a good crop of vegetables this year. The children enjoyed singing 'There's a worm at the bottom of the garden,' and performing it for parents during Celebration assembly.



The children heard an old favourite 'The Hungry Caterpillar'. They've learnt about the lifecycle of a butterfly and we've been watching our own caterpillars grow. We can't wait until they transform into butterflies! It was delightful to see the children imitating butterflies dancing with scarves on our outdoor stage. The story also gave us the opportunity to talk about the importance of eating fruit and we shared strawberries and melon at snack-time. The children have created their own bug habitats in our small world area and we are looking forward to creating our own bug hotel for the real things! In the malleable area the children have created some magnificent imaginary bugs with playdough and bits and bobs.

This week we have been hearing the story 'Oliver's Vegetables'. The children loved playing with real vegetables in our harvest tuff tray – they had lots of opportunities to sort, weigh and count the vegetables. We've added lots of vegetables to our water tray and the children have enjoyed making vegetable soup. We also made the real thing, many of the children were surprised that they enjoyed it so much! The staff have loved watching the children on rainy days in our outdoor space. Some



of the highlights were making magic mud in the mud kitchen and experimenting with bubbles in rain water.

St Mary's Explorers is open 8.45 – 3.15 every week day during term time and spaces are available for children aged 3 years +. The unit allows preschool and Reception children to work together on lots of key areas of learning, something that Ofsted agree allows younger children to make greater progress. If you would like to look around, or come and stay for a taster session, please call 01258 820417 to make an appointment. (Sessions: £4 per hour/£24 for a full day, Early Education Funding Vouchers accepted.) Find 'St Marys Explorers Preschool' on facebook to see more of what we've been up to!

Atom Club - Science & Coding Club



What a month! I'm so pleased to announce that we've got the keys to what will become the Dorset Science & Technology Centre. We've been busy bees moving from our little log cabin here in Marnhull to over 2,100sqft of pure potential! There's still a lot of decorating and furniture sourcing to do, but it's already starting to take shape and the educational shop is ready to open now.

All of a sudden, we're on people's radars! We've got a winner of Robot Wars sending us an exhibit shortly and support from as far as Florida! Fingers crossed we get as much support this week when our begging letters go out... If you know of a local business that would be willing to donate materials, time, or sponsor an exhibit, please get in touch.

New Exhibits

We've got our first dinosaur! Chris and Luke have also been busy building an innovative exhibit that combines a sand-pit with an xbox kinect and a projector - unusual mix, but it has to be seen to be believed. We've planned a Mars Rover exhibit for the space zone along with a rocket launching tube.

Jupiter - the Atom Club Mini-bus

You may have seen Chris and Emma plodding through the village in the Atom Club mini-bus - you can't miss the dinosaur on the back! A bargain buy that has already helped a great deal with the furniture removals! Complete with fold out stairs and wheelchair lift, we think it'll also be a real asset moving forward. It means the MG will have to go, but it's a sacrifice that we're willing to make.



Baby Chicks at Atom Club

We were kindly given 6 'possibly fertilised' eggs from Lizzy, a neighbour of the centre. They're in the incubator and should hatch by the time this lands on your doormats. Three turned out to be un-fertilised and sadly one stopped developing, but the other two seem to be doing just fine.

Atom Club On Tour

We've left Luke in charge for a few days while we tour the UK's Science centres, getting ideas and tips for exhibits. Stops include @Bristol, Technquest in Cardiff, Thinktank in Birmingham and the Space Centre in Leicester.

New Scientist Live

It's just been confirmed that Atom Club will be at the biggest STEM exhibition in the country! More details to follow, but we'll be the first stand you come to, next to the European Space Agency (read Tim Peake!).

Jungle Hut Pre-School

What a start to a packed term starting with our amazing trip to Farmer Palmers on May 5th we set off on the big bus with 23 rather excited children enjoying spotting cows, sheep and along the way we even spotted some horses that we thought were zebras as we got closer we discovered it was horses with coats on!! arriving at the park we of course hit the pedal tractor area this was a good opportunity to ride off the energy contained on the journey down.



We all enjoyed looking at all the animals displayed around the park getting involved with goat's lambs guinea pigs, ponies, pigs and so much more. The children then were given the chance to feed the lambs this was hilarious watching the children grapple with the lambs for control of the bottle and the much-needed contents.

The children played in the very exciting sand play park working up an appetite for lunch and as in true Jungle hut tradition a homemade picnic that had been prepared earlier well precisely 4.00am that morning in my kitchen. After a much needed toilet break and of course washing hands it was time to settle down for our picnic lunch only to be spotted by a flock of terns who decided to invite themselves!!! But with a lot of shooing and hissing they finally realised that us Marnhull bunch were in no mood to share anything let alone our picnic and soon went back to where they came from.

After lunch, we looked around the outside animal pens we met lots of small feathered friends to tall fluffy alpacas it was now the time to head back to our big bus for the journey home with Emma in charge of entertainment she didn't disappoint!!!! what a fun and entertaining end to our trip for all our school leavers I am sure they will remember for many years to come.

Our garden area is growing well with the beans, potatoes, sunflowers and sweet peas looking good the children discovered baby strawberries and blackberries this week and are looking forward to eating at snack very soon, tadpoles are very slowly developing into frogs with our caterpillars set to arrive early next half term. Our Quails eggs have been carefully placed in the incubator so lots of expectation and excitement there we will keep you updated with their progress.

Our holiday clubs that are offered during term breaks have gone from strength to strength with numbers rising every holiday break. The clubs are carefully planned with activities and events for the age and stage of the children attending as I said in the previous messenger during the Easter holiday clubs we heard a cuckoo so this sort of took over our planning making bird feeders, bird food and we made our very own bird box using our woodwork bench and tools the arrival of the swifts coincided with this very nicely it was as though they had heard food was of plenty here at the Jungle hut so let's get there quick.

During the holiday clubs, we enjoyed several walks around our village because it was early spring we spotted lots of different flowers and plants not to mention a variety of trees and bushes it particularly interested the children looking at the blossom on the horse chestnut tree that these little flowers would later in the year provide conkers for our investigation table

On several occasions, we took our lunch boxes enjoying the great views on one occasion we visited Mr Kendall's pond having our picnic on his field we could see the church in the distance this prompted lots of discussion about that is where the Jungle hut is, after lots of running, chasing and racing with a very fit Emma it was time to head back but we couldn't resist calling in the spar shop for some ice cream which we all enjoyed back at the Jungle hut.



We are now heading towards the next half term with plans well underway for the week Emma has planned lots of exciting activities for the children can't wait!!

Our term pre-school sessions have been very busy with all staff attending many training courses and conferences updating their professional development and preschool skills.

We take children from 2 years – 5years accepting 2year old and 3/4year -old Nursery Grant. At the beginning of April, we were really pleased that we now have in place facilities to accept the 30 hours a week free childcare.

To find out more about what we get up to the Jungle Hut please visit our website at junglehutl.com or have a look at our up to date Facebook pages

If you would like to know more about the Jungle hut and the flexible childcare including our holiday clubs, please get in touch. Email junglehutpreschool@gmail.com

Sue

Marnhull Baby and Toddlers



We had an amazing day on 27th April, when we took part in our sponsored bounce to help the Parish council raise money for the new play park equipment. We all enjoyed taking part and the children were amazing, altogether we raised £144.15p which was brilliant.

We had a lovely time at Coolplay on the 4th May, as the hall was being used for voting. It was nice to see the children playing together in a different environment.

Over the next few weeks we have alot going on. There is no toddlers on 1st June as it is half term.

The hall is being used again for voting on 8th June so we will be at Coolplay again or meet at the park depending on the weather. Gill from Osborne books will be with us on 15th June.

We also have a Pre-loved sale on Saturday 17th June 10:30am till 12:30pm. Emma and Dee

AJS Plumbing & Heating

Plumbing & Heating Engineer

Tel: 01963 400503 or 07814 038852
Email: office@ajs-plumbingandheating.co.uk
Website: www.ajs-plumbingandheating.co.uk



Boiler Servicing & Maintenance
Air Source Heat Pumps/Ground Source Heat Pumps
Bathroom Installation Underfloor Heating
General Plumbing
Landlord Certificates & Power Flushing



HOOK

ELECTRICAL CONTRACTORS

All electrical works inc: *Fault finding & repairs, Condition reports, New builds Lighting design, Refurbishments, Ecclesiastical, Schools & Domestic.*

Contact Ed Cudlip on Tel/Fax: 01258 820161 Mobile: 07956 281644

EMAIL: hookelectrical@btinternet.com



Ben Hannam Electrical Contractor

All aspects of electrical work undertaken

- New Installations & Rewires
- Alterations & Additions
- Consumer unit (fuseboard) upgrades
- Fault finding & Repairs
- Condition Reports

Musbury Close,
Marnhull

Tel : 01258 808329
Mob : 07914 760295
Email : benhannamelectrical@gmail.com



R.M. MOGRIDGE CONTRACTING LTD

For All Your Construction Needs

- Commercial • Domestic • Agricultural • Equestrian
- Excavation • Ground Clearance • Spoils Disposal • Foundations
- Drainage • Septic Tanks • Concreting • Tarmacing • Paving
- Oversites • Driveways • Kerbing • Ponds • Lakes • Synthetic Lining

For Advice & Free Quotations

Tel. 01963 363208 or 07836 747895

E.mail: rmmogridgecontractingltd@btconnect.com

TAXI – CAR



Courteous Lady Driver

Tel: 01258 820526

Mobile: 07929 983095

ORCHARD CARS

Private hire and courier service

Local and Long Distance

24 hour airport service

01258 472395

Operated by Andrew Budd

SAXON ROOFING SERVICES



6 New Street, Marnhull DT10 1PY

Tiling, Slating, Leadwork, Timberwork
New & re-roofing work undertaken

Nick Upshall
Tel: 01258 821231
Mobile: 07801 851079
www.camelotbuilders.co.uk

Marnhull Parish Council Special

PARISH MUTTERINGS

The top topics being discussed this month:

Dog fouling campaign

'BAG IT AND BIN IT.....MOST PEOPLE DO'

The Council is considering possible locations for more Dog waste bins.

Refurbishment of the Children's play area in the Recreation Ground is taking place at the end of May with some new exciting equipment being installed.

The proposed telephone mast in Sackmore Lane was discussed at the last Parish Council Meeting. Members of the Village aired their concerns and it was proposed that the Parish Council write reflecting these to Gillan Consulting.

Garden Cemetery – the new Cemetery regulations were adopted at the last Parish Council Meeting and will be Standing Order no 5.

Another defibrillator could not be provided at this time due to cost but will be kept under review.

A review of Standing Orders is continuing

There are vacant plots available on the parish allotments on Sodom Lane. Annual rents are very reasonable so if you like the idea of taking up an allotment and growing your own produce as spring comes along, then contact the clerk to the parish council who will sign you up on 821231

All of the above are currently being dealt with by your Parish Council If you would like to learn more or wish to comment please call 821231 or email mpccclerk@sallyupshall.f2s.com

Recruiting Councillors are you interested? Contact Trevor Vaughan call 821636 or email trevor.mpc@gmail.com

Children Play Area

Great News!

We are happy to announce that we have reached enough funding to install some new equipment into the Children's Play Area in the Recreation Ground. This couldn't have been done without the help of the Parish Council, various grants, a substantial donation from a local business and the village toddler group. A big thanks to them all.

There will be a new large activity unit with tunnels and various climbing activities, slide and play panels suitable for the smaller children this will replace the old wooden one which has seen better days. Other new play equipment will be a springing horse, a mini seesaw, a small playhouse and a spinner.

We are also putting in some picnic tables including one for the children so picnics will be the order of the day during the good weather.

Work should start w/c 22nd May and the Play Area will be closed for the duration of the installation which will take around ten days. We thank you for your patience while this is being done and the contractors are on site. Once finished we are sure you will all enjoy spending time in the Play Area as it is a wonderful part of the village where children and adults can take great pleasure in their surroundings.

CLRs Sandy Kerr and Louella Hamer

Burning Plastic

Parishioners are reminded that it is illegal to burn plastic anywhere. Burning plastic, for example plastic bags, produces toxins that have been linked to cancer and pollute the local atmosphere.

Dog Fouling Campaign

I am pleased to report that there has been a significant decrease in dog mess found on the Recreation ground and in the cemetery since notices have been put up requiring all dogs to be kept on the lead in these areas.

Regarding the exercising of dogs on the recreation ground I have been asked to point out the Rules set down by the Parish Council to all users. Rule number 6 states 'Dogs are allowed on the ground but must be on a lead and under the control of a responsible person at all times. Dog faeces must be removed and either taken home for disposal or placed in the bin provided We have received several complaints regarding areas that appear to have continual problems with dog fouling and the unacceptable dumping of 'poo' bags especially in the hedges at the top of Church Hill and on the footpaths in the fields between the village and Mowes Lane. This is not only unsightly but a hazard to people, livestock and wildlife.

So, remember to take your bag dog waste with you and deposit it in an appropriate bin.

Remember; BAG IT, BIN IT.....most people do.

CLr Sandy Kerr

Marnhull Parish Assembly

At the recent Annual Parish Assembly I found the attendance of both the organisations presenting reports and the members of the Community who came just to listen rather disappointing.

The event is hosted by the Chairman of the Parish Council and has two objectives:-

To receive reports from what is currently the 31 organizations in Marnhull including the Parish Council, the Churches, Schools, Marnhull Messenger and all Clubs and Societies on their activities for the past 12 months presented by a chosen representative preferably in person, but in writing if need be that will be read out by the Chairman of the meeting. To give parishioners the opportunity to hear and learn more about what is going on in our very active and friendly Community.

I have attended a number of these events over the years and find them both interesting and informative always learning something new about our village and those who contribute to the happenings around us. Sadly it seems to be losing momentum despite greater publicity than I recall before and this must be somewhat dispiriting to those who do take the trouble to prepare and present reports let alone anybody attending on an interest basis and in my opinion does not really reflect the warmth and closeness of this Community.

The reports need not be, and seldom are more than half a page of A4 that outlines the specific activities of the past year. A very few send in written reports which the Chairman reads out but the limited number presented in person are more interesting for that simple reason.

I know the Chairman of the Assembly is particularly disappointed at the poor attendance especially as he has been making strong efforts to increase the awareness of the event and participation on the evening in question; he had sent out over 100 e-mails and there were announcements in two editions of the Messenger. This year's Assembly started at 7pm and lasted just over the hour so it's not too long even if it runs to 90 minutes. The gathering also allows an opportunity to ask questions of the presenters, indeed, so as to enable greater discussions the idea of serving refreshments [tea, coffee, biscuits] at a nominal price is being considered.

It's worth saying that this is not anything like a Marnhull Parish Council meeting, even though the Chairman but for purely administration reasons. Anybody wishing to respond to these observations can do so through the magazine or by contacting the Chairman Trevor Vaughan through the Parish Clerk Sally Upshall - mpccclerk@sallyupshall.f2s.com because it would be interesting to hear any thoughts [starting time for example] on the event and how the Annual Parish Assembly could be made more appealing.

Jeremy Watson

K.M. SELBY
PAINTING & DECORATING

TELEPHONE 01258 473201 MOBILE 07792 029215

SAUL MITCHELL
PAINTER & DECORATOR

**Maintaining the Past
Designing the Future**

Est. 2004

Covering your local Area

**All Aspects of
Interior & Exterior Decorating**

01747 830029 or 07787 927455

CHRIS WOODS
GENERAL GARDENER

Tel. 01258 820382
Mob. 07930 439931

Based in Marnhull

BRAMALL GARDENS LTD

DESIGN—LANDSCAPING—MAINTENANCE

EXPERIENCED IN ALL ASPECTS OF GARDENING

**FAST AND EFFICIENT
ALL RUBBISH REMOVED**

☎ : 01258 820394 MOBILE : 07971 793 872

DARREN KENDALL

WOOD BURNING STOVE INSTALLATIONS

Fully qualified HETAS approved registered installer.

**From opening up your fireplace, carrying out
chimney remedial works, fully installing and
self certificating new wood burning stoves.**

HOME: 01258 820804 MOBILE: 07813 607 234

[Building works carried out by an NVQ/City & Guilds fully qualified builder](#)

JOSEPH PEACOCK
PAINTER & DECORATOR

07967 664446

**INTERIOR * EXTERIOR * FREE
ESTIMATES**

SHAFTESBURY

**COMPTON
SMITH**
CLASSIC INTERIORS

Designer Paints • Wallpapers • Fabrics
Curtain Poles • Curtains • Upholstery
Lamps • Architectural Ironmongery
Interior Design Service • Handmade Furniture



10d Wincombe Business Park,
Shaftesbury, SP7 9QJ Tel: 01747 850150
www.comptonsmith.co.uk

CAUNDLEWOOD INTERIORS

**Makers & Restorers of Fine
Handmade Furniture.**

Cabinet making - Polishing -
Woodturning - Veneering -
Handmade Kitchens & Bespoke
Joinery.

Phone: 01963 362252

www.caundlewood.co.uk

Village Hall Improvement and Extension Project

Time to remind everyone about this major project for which we are currently fundraising...

What will it provide? (all subject to funding and final consultation)

- A stunning enlarged main hall with part suspended timber floor, and floor to ceiling glazed end gable wall with direct access onto a terrace overlooking the recreation ground and children's play area.
- Seating for 130+ in rows or 100+ around tables (currently 100 and 75 respectively)
- Substantial accessible storage for users all direct off the main hall
- An enlarged modern entrance foyer with direct access to modern toilets for all
- Flexible stage arrangements for a wide variety of users and events
- An additional room for multi use including meetings, small groups, stage changing

What are the current issues with the Hall?

- Main hall now cramped for a number of organisations and events
- Lack of small meeting room
- Inaccessible and insufficient storage
- Toilets not up to current standards, limits appeal of hall to users and for private lettings
- Inside of main hall benefits little from the magnificent surroundings.

Funding?

The current estimated cost is £150,000+ depending on the final spec incl fixtures, finishes and fittings.

We currently have around £65,000 which has come in part from a legacy, grants and other financial support from a large variety of Marnhull organisations, fundraising events and other local initiatives, and a small amount from our reserves. Grant applications to external funders are currently under way, and we are currently awaiting responses from Reaching Communities (part of the Big Lottery), and the Bernard Sunley Foundation. We are always open to ideas (and further financial contributions!)

Timing?

This depends almost entirely on the funding ... some time in 2018 sounds good!

All queries and suggestions please to John Dowsett 01258821534 07949818213 or a member of the committee

Marathon Sponsorship £1,800 + Thank you!

We extend a huge thank you to all who sponsored the (not so) Mystery Man, raising just over an astonishing £1,800, helping to push our total to £65,000 as above. There were some notable achievements by organisations and areas of the village who really pushed this, and many people were extremely generous. Thank you everyone. The time (with a bad hip) was 5 hrs43!!

Marnhull Garden Club

Coach visit to Mottisfont National Trust

28th June Wednesday

Places available to non members

Coach £11.00

Contact Malcolm Calvin for details tel: 01258 821042

Marnhull Maidens



The Marnhull Maidens kick off their first ever league season on Sunday 21st May away at Broadstone. It will be a huge success story for many, especially those that came forward with the idea of forming a Ladies team at Marnhull.

League or even friendly matches with Women's teams seemed a long way off 18 months ago, huge congratulations to all involved in helping to get this off the ground.

The squad are constantly improving, the togetherness is unbelievable and it is such fun, everyone is made welcome hence we have a large number of Ladies now attending.

If you have any aspirations to join in then please contact Jill Sullivan on 01258 821069 or Les Elsworth on 07850749736, we would be only to pleased to help you. Even if you're not a cricketer but like to watch please take a look at our fixtures for home matches, you are most welcome to come along and support.

Marnhull Maidens Home Fixtures 2017

28th May - Maidens Festival - Competition - 11am start
4th June - Broadstone - League game - 1pm start
25th June - Weymouth - League game - 1pm start
9th July - Devizes - Friendly - 1pm start
16th July - Sway - League game - 12pm start
20th August - Christchurch - League game - 1pm start
27th August - Ilton - Friendly - TBC

Boilerwise Ltd Specialist Boiler Engineers

Repair, Service, Maintenance and Replacement of OIL and GAS Boilers. Heating System Fault Diagnosis and Repair. Landlord Certificates, Systems Surveying and Power Flushing.

01258 474605

24hr Gas Safe and Oftec Registered Engineers



**premier
electrics**

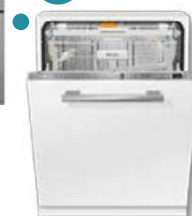
Call us on: **01305 360300**

01747 470212

01258 398212

Appliance Repairs

- Same Day Repairs
- Local Engineers
- OAP Discounts
- 12 Months Warranty
- Established 1971
- Holiday Rental Repair Specialists



Same Day Repairs
and
12 Months
Warranty

We Clean Ovens

...so you don't have to!

Call us today to have your cooking appliances sparkling, using our own eco friendly products.

Our oven cleaning experts will leave you free to enjoy your valuable leisure time.

- Range & Aga Specialists
- Ovens & Hobs
- Extractor Hoods
- Microwave Ovens
- Traditional Stoves

oven
oven valeting service

Local | National | Affordable

Call TODAY for LOCAL Service

01747 835 830
ovenueevil.net



REGENCY RENOVATIONS

- New Builds - Extensions - Renovations -
- Loft Conversions - Conservation & Listed Works -
- Carpentry & Joinery - Kitchens & Bathrooms -





01963 363002

office@regencyrenovations.co.uk

www.regencyrenovations.co.uk







Jamie Fox & Son

All types of Fencing, Gates & Sheds supplied and erected.
All aspects of groundworks undertaken.

Marnhull
07950 259163
jfoxandson@hotmail.com

Please contact for a professional and friendly service.



Mercury Fitness

MOBILE PERSONAL TRAINING
BEGINNER FRIENDLY
FREE NO OBLIGATION CHAT

07555 686052
mercurymfitness@hotmail.com
www.mercurymfitness.co.uk
Facebook: MercuryFitnessPT



Computer, Laptop, Tablet & Phone Repair

Microsoft and Apple specialist, viruses removed, upgrades and repairs, broken screens replaced, email setup, wireless broadband setup
supplier and maintainer to The Crown Inn

01258 820871 or 07502 614260
mark@connectminds.com

Art For Everyone Summer Exhibition 2017

Tuesday 20th June 7:30 to 9pm

At Marnhull Village Hall - One Evening Only!

Marnhull Art for Everyone group will be holding their annual Summer exhibition at the village hall on the evening of Tuesday 20 June from 7-30 to 9pm.

Please come and join us for a drink and some tasty nibbles, meet our very talented artists and have a look at what we have been up to in the past year.

This one evening only, very exclusive event promises to be a wonderful vibrant show of original inspirational art and very local talent!

So what's in store this year? We have been adventurous with both media and subject, including painting Autumn trees with a mixture of strong tea and Indian ink which gave an atmospheric sepia effect. Abstract art was a new subject for most and with reality as our starting point we followed a process of creative abstraction, gradually moving further and further away from our realistic beginnings to create dynamic compositions in mixed media.

You might have seen a sneak preview of some of our Abstracts in the Post Office window earlier this year.

You will recognise the local landmark, Sturminster Newton mill amongst the artworks. We enjoyed an inspirational "en plein air" drawing day exploring this historic building and beautiful setting last Summer term.

Work developed from our day out includes detailed pen and wash drawings of the exterior of mill, studies of the interior and loose watercolours of the River Stour and surrounding landscape. Some of our drawings and paintings were displayed in the Exchange "Essence of The Mill" exhibition last Summer to celebrate 1000 years of milling on the site.

We learned about complimentary colours, how to use a limited palette and mixing watercolour paints in "The Viridian Challenge" A project which resulted in a beautiful collection of delicate watercolour paintings of old sheds in muted shades which were all created by mixing the vibrant green shade of Viridian with one other colour, typically a bright pink or crimson red. Who would guess these gentle subtle tones were created from such strident beginnings.

Look out for a flock of silhouetted birds tweeting away against bright acrylic painted skies and you may even spot the odd snowdrop or two popping up here and there.

We will as always be asking you to vote for your own personal favourite painting and the winning artist will be announced at the end of the evening. Good luck everyone!

Other Art for Everyone 2017 Exhibitions:

Durweston class, Durweston village hall, Sun 11 June 2-30 to 4-30pm.
Shaftesbury class, Shaftesbury Arts Centre, Thurs 15 June 7-30 to 9pm.

All welcome.

Tutor Deborah Chisman tel 01258 820349 email deb_chisman@hotmail.com

Marnhull Art for Everyone class meets on Tuesdays during term time at the village hall.

Deb Chisman

Zumba Class Supports Village Hall Fund

Emma Hurst's Wednesday Zumba class raffled a sport water bottle in aid of the Marnhull Village Hall Improvement Fund.

Thanks to everyone for their support;

£10 was raised for this village project.

Ros

White Hart Link



Walking in the beautiful Blackmore Vale in North Dorset will soon become even more rewarding!

April 27th saw the launch of an exciting new project – the White Hart Link – a 50 mile/80 km walking route linking the five Towns of North Dorset - Gillingham, Stalbridge, Sturminster Newton, Blandford Forum and Shaftesbury - using footpaths and quiet lanes.

Developed from the vision of Janet Swiss (artist and local resident) it is hoped that the White Hart Link will attract visitors, support local business and encourage enterprise. Led by volunteers, the project forms the basis for community groups to feed into and benefit from activities along the route. Why the White Hart Link? The Blackmore Vale was once known as the Vale of the White Hart. Legend has it that a white stag that was protected by Henry III was killed by a bailiff of Blackmore Forest. He was fined and imprisoned and the Vale paid a fine of White Hart Silver for many years

it is hoped that sections of the route will be 'adopted' by communities through which it passes, with each local group encouraging the involvement of all ages and abilities, and young people in particular to care about and protect their environment, and develop rural skills. Future developments will involve producing walk leaflets, linking the route with local points of interest/viewpoints/National Trails/heritage assets/art/businesses/B&Bs/etc.

The launch event itself involved Mayors and Councillors from the participating Towns, who watched as pupils from Stalbridge Primary School fixed the first route markers along the stretch they will adopt. The first leg which will be 'open for business' will be that between Stalbridge and Gillingham, which is planned to be finished to tie in with the Gillingham Walking Festival, on September 3rd this year. Working with the Dorset Countryside Rangers, it is envisaged that the whole walking route will be established and 'route-marked' within four years.

For further information, or to become involved, please contact Project Manager Mike Woods or Route Manager Jan Wardell (info@whitehartlink.uk).

JW

Men At The Mill

Looking for a bit of company and chat, then drop in and join likeminded older gentlemen at Sturminster Newton Mill on Monday on the 2nd & 4th week of the month (11am-1pm).

Initiated by local man, David House, and fully supported by Peter Loosmore from the Sturminster Newton Museum & Mill Society, this twice monthly activity is taking place in recognition of a desire for companionship by those who live alone. With tea and cake on offer for added conviviality, new friendships will soon be formed.

Organiser, David, said "We last met on Monday 8th May and it was a sunny day and we all enjoyed tea, coffee & cakes, followed by a tour around the mill which was very educational and showed much interest. On the 22nd May there will be a talk on Moths and a Skinner Moth Trap demonstration which is used for identifying & release of different moth species."

For further information contact Peter on 01747 854355.

Marnhull's Marathon Runners

In the North Dorset Villages Marathon (26.5 miles)

30th April 2017



Atul Odedra

for Railway Children (in India and elsewhere)

Some people say I look like a runner but it was very hard work, especially the last six miles. I am so grateful to everyone for all their sponsorship and encouragement.

Latest news – I have just got a place in the London Marathon 2018!



John Dowsett

for Village hall Improvement and Extension

At 68 this was the first and last time ever, but it was well worth the effort. Was dead on schedule for over a third when a hip gave up, but I made it somehow.

Many many thanks for all the sponsorship and enthusiasm.

Thank You Marnhull

This was a great experience for us both – thank you all so much

Atul and John

Sturminster Carnival

Saturday 2nd September

Children's judging will take place at 6pm.

Carnival will start At 7pm from Bridge street.

Events for the week so far:

Pet show Saturday 26th August, also judging of decorated shop windows, this years theme is Funfair. We will also be judging the best small window.

Wednesday 30th August, fish and chip quiz.

Thursday 31st The walk

Friday 1st September Bingo

Sturminster Show, we will be choosing our royalty:

2pm. Queen 15 +

2.30pm. Princess 8 - 14 years old

Prince. 8 - 14 years old

Attendants 5 - 13 years old,

You must live in an 8 mile radius of Sturminster Newton.

Sturminster carnival committee

Gillingham High School



Our Young Enterprise team 'Forget Me Not Plants' took part in a Trade Fair and competition in Shaftesbury last week and won the award for best trade stand.

The Young Enterprise scheme involves students working together to run their own business. The team of Year 12 students designed and manufactured their own product for sale - a grow your own plant gift kit, which they took to the Trade Fair.

Do You Use Sodom Lane?

Planning Application re. Ashley Farm

This article is from the owners of the three properties in Ashley Farm Lane namely, Ashley Farm Bungalow, Lime Tree Barn and Owl Barn.

A planning application has been lodged with NDDC for a change of use of Ashley Farm from residential to children's day care nursery and pre-school.

More information can be found here <http://planning.north-dorset.gov.uk/online-applications> then searching for Ashley Farm.

The proposal in brief is to allow for 61 young children and babies to be cared for from 7.45am until 6.00pm Monday to Friday. In addition there would be 12 staff and 4 support staff and there would be in excess of 70 vehicles travelling up and down the lane at least twice a day, more for lunch time pickups.

We believe the proposal should be opposed for the following reasons:

1. At the junction of Ashley Farm Lane and Tanzey Lane with Sodom Lane there is a 'pinch point' and the number of vehicles generated by this proposal would create a major hazard causing long queues on Sodom Lane.
2. Planning rules state that the public should be encouraged to walk to their destination when practicable but there is no footpath on either Sodom Lane, between Ashley Road and Ashley Farm Lane, or the lane itself, so parents and children would be in danger if they attempted to do so.
3. Ashley Farm Lane is a public footpath (N47/85) but due to the large number of vehicles this proposal would generate, its use by local walkers would make the lane frequently unusable.
4. Much time would be spent by the children outdoors in the playground and this would create a great deal of noise for all local residents.
5. For safety reasons it is likely that street lighting would have to be installed at Ashley Farm and along Ashley Farm Lane. This would breach local planning guidelines and would completely change the character of this iconic rural location.

We believe this planning application is ill conceived and would have a massively negative impact on everybody in the locality and we urge you to lodge an objection with the NDDC Planning Office.

If you decide to lodge an objection you must do so by 26 May 2017 either by email to: devcontrolNDDC@dorset.gov.uk Or you can write to:

Development Control, North Dorset District Council, Nordon, Salisbury Road, Blandford Forum DT11 7LL

If you need any further information please email mike@owlbarn.net or phone me on 820347.

Thank you
Mike Collard (on behalf of the residents in Ashley Farm Lane)

PS – A meeting of Marnhull PC will take place at 7:00 pm on Thursday 25 May at the Village Hall when this proposal will be considered. The public may attend the meeting and will have the opportunity to influence the PC and ask them to recommend the proposal is rejected by NDDC.

Scam Alert!

A new scam has been brought to our attention - this one is claiming to be from the INTERNATIONAL POLICE CRIME PREVENTION UNIT they state that your computer has been hacked and need access to your computer to load security.

This is similar to the MICROSOFT scam that states your computer has a virus. Do NOT be taken in by these scammers they are after your well earned cash!!

Mandy Robinson (Dorset Police, PCSO 5352, Stour Valley)

Sturminster Newton Youth Club

With lots of ideas for Youth Club activities put forward by young people at the open evening, programme planning for the coming months is going to be a lot of fun activities such as cooking, sports, crafts, keep fit, boxercise, climbing, slacklining and camping along with a monthly trip to the pictures, HiFly, Bowling or swimming, we have lots to look forward to. Youth Club sessions are Tuesdays 6-9pm school yr 7 & 8 and Thursdays 6-9pm, yr 8 and above.

After the May half term we will be starting The Duke of Edinburgh Awards on Thursday evenings, if you have already started your award but need help in finishing, pop along to see us.. we are here to help. We will also be extending the Tuesday evening sessions and look forward to school year 6 joining years 7 & 8 for team games and fun activities to support the transition to the High school in September.

We hope to see as many of you as possible at the Big Lunch, on June 4th, The Youth Club will be running a free photo booth.. come and say hello. Follow us on Facebook, Friends of SturYouth, for regular updates of activities. The Youth Club will be operating under the umbrella of SturYouth, which is in the process of developing its own identity separate from SturQuest.

We are really lucky to have some amazing volunteers to help run the evening sessions, if you would like to offer your support and can spare a couple of hours a month, we are looking for people to help with administration and to act as Friends of the Youth Club.

Please contact sturyouthclub@gmail.com for more information.

Dawn Ball - Youth Club Leader

Suspicious Vehicle

Dorset Police Rural Crime Team would like you to be aware that a White Ford Transit Van 55 Plate F55TX has been seen in suspicious circumstances asking to buy scrap metal and batteries on farms and businesses across the county during the last few days and has been seen in Wareham and Dorchester areas.

If this vehicle or other vehicles are seen acting suspiciously please gather as much information as possible such as the registration number and descriptions of the driver and any passengers and contact Dorset Police immediately by calling 101, at www.dorset.police.uk via email enquires@dorset.pnn.police.uk

Sedgehill Flower Festival

Friday 28th to Sunday 30th July 10.00 am to 5.00 pm

The members of Sedgehill Parochial Church Council warmly invite you to join us at our church to view and enjoy the skilled and colourful display being provided for us by the Shaftesbury Flower Arranging Group.

Our church organ will be played each day and refreshments will be available; including light lunches, cake and cream teas.

Proceeds will go towards St. Catherine's Church maintenance fund.

Fake Police!

There has been a series of recent incidents reported to Action Fraud where a lone fraudster has approached victims and make an excuse to talk to the victims such as enquiring about directions or offering a recommendation for a good hotel. After this interaction, several other fraudsters will intervene purporting to be police officers in plain clothes. The fake officers will then give a reason to examine the victims' wallet, purse or personal items.

They may also examine the first fraudster's items or try to tell victims that the first fraudster is suspicious in order to gain victim trust and appear more realistic in their guise. Victims have then reported money or valuables were missing.



Charity Registration No.: 1137187

Invite you to

'Take a Chance on me'

Saturday 17th June 2017

7:30 pm

at Buckland Newton Village Hall

Conductor : James Crawshaw

Accompanist : Sue Massey

A concert of light hearted music which everyone will know, with opportunities for some audience participation.

There will be a licensed bar and raffle

Tickets in advance or on the door:

Adults £8.00, U16s free: to include canapés

For tickets and further information please call:

Bill 01305 262575, Diana 01300 345434, Nicki 01305 848383

or weatherburysingers@gmail.com

Formations Company Entrepreneur Award

The Formations Company Entrepreneur Award is a business grant scheme created to encourage aspiring entrepreneurs in industry, across all sectors. The programme will support those with a business idea that 'stands out from the crowd'.

Coupled with the funding, winners will receive a mentorship package from Barclays Business, a free company set-up and professional guidance and mentorship to get their business started.

The winning entry will take the grand prize of a £1,000 business grant and have their limited company set up for free; including all the documentation. The winner will also receive a start-up package including professional guidance and mentorship from Barclays to help turn the business idea into a reality. The mentorship package from Barclays includes the following resources to help over the longer term:

- SmartBusiness insights - a new tool to help manage and run a business smoothly.
- Maker Space.
- Barclays Local Insights.
- The opportunity to speak with a Local Business Manager.
- An invitation to a Cyber-Security Workshop, which looks at the impact and scale of cybercrime and how to stay safe with online banking.

The programme is open to entrepreneurs in the UK who have an idea for a start-up business. Applications are accepted from students and business enthusiasts across all sectors.

The deadline for applications is 30 June 2017.

www.theformationscompany.com/blog/the-formations-company-entrepreneur-award/

Week of Treats for Dorset Residents



Residents across Dorset can enjoy discount deals at many of the county's top attractions during the 12th annual Dorset Residents' Week from 8 to 14 May, using the special offer vouchers featured in the spring edition of Dorset County Council's community newspaper 'Your Dorset'.

The vouchers can be used during Dorset Residents' Week at over 50 leading leisure and entertainment venues in and around the county from historic homes and museums to country parks and fitness facilities.

The attractions this year include the Nothe Fort, Tutankhamun Exhibition, Bennetts Water Gardens, Sherborne Castle, Portland Castle, Langham Wine Estate and more.

A full list of all the attractions taking part and the promotions on offer is included alongside the vouchers in the centre four pages of 'Your Dorset' which were delivered through residents' doors from Monday 3 April.

All of the special offers covered by the vouchers will be valid during Residents' Week only and are subject to availability.

Dorset Residents' Week has been organised by the Visit Dorset Tourism Partnership, and the initiative aims to showcase the many great family attractions available on our doorstep.

Nick Thornley, on behalf of the Visit Dorset Tourism Partnership, said: "Residents' Week provides an unmissable opportunity for local residents to visit some of Dorset's top visitor attractions for less.

"We are extremely fortunate to live in such a wonderful area and I encourage residents to come out and enjoy the best of what Dorset has to offer and to tell friends and family when they visit later in the year.

"I would like to thank all the attractions that are involved with Dorset Residents' Week this year for making it such a successful event."

If you missed or have misplaced your copy of 'Your Dorset', you can download the Residents' Week supplement from www.visit-dorset.com which gives details on all participating attractions and their offers plus extra vouchers if needed.

For more information about Dorset Residents' Week, along with detailed information about accommodation, events, activities, heritage and culture around the county visit visit-dorset.com

Trading Standards



Too good a price to be true?

When most of us think of counterfeiting we think of clothes and DVDs not electrical and cosmetic products. So what is the problem with buying fake products? Fake goods are not subject to the same stringent safety checks that genuine goods undergo. UK Border officials advise that buying counterfeit goods funds terrorism. They claim that this illegal trade profits criminals by tens of millions of pounds each year.

A recent safety survey of counterfeit iPhone chargers saw a 99% failure of basic safety checks. Chargers were found to be without fuses and unsafe labelling potentially leading to overheating and exploding.

Other counterfeit items recently found have been life jackets stuffed with packaging instead of buoyancy aids, sunglasses with no UV protection causing lasting damage to the eyes and perfume found to contain cyanide and in some cases human urine and toxic levels of chemicals.

So how do you spot a fake? The chances are that if it seems to be too good to be true then it probably is, always shop from reputable traders.

If you want to report concerns, or if you would like advice about your consumer rights, then please contact the Citizens Advice consumer helpline on 03454 040506.

The Sturminster Scout Show is Back

This family, fun filled day will prove to be an enjoyable day out, and not one to miss! From arena displays to a large array of stalls, the day will provide something for everyone.

Saturday 17th June

The show begins at 1030am with the vintage vehicle display, stationary engines and the car boot sale. Many crafts and local stalls will be selling their wares.

The Carnival Royalty Choosing will commence at 12 noon including, this year, a new section for Carnival Prince. Refreshments are available all day with the bar, curries of Just Georges, and the infamous Scout BBQ.

Live music will begin at 1pm with the local reknown Band "Loose Connections". Castle Cary Cygnets Majorettes will entertain us in the afternoon with the crowning of the Royalties around 330pm.

Joe D Rose will take us into the early evening with live Country and Weston Music. So come and join us for what will no doubt be a enjoyable day for all.

Food and Drink Galore!

On Saturday 3rd June (10am-4pm) the Producers' Market returns to Sturminster Newton, and, in collaboration with Crafts at The Exchange, aims to attract both visitors and residents alike by supporting The Exchange Real Ale & Cider Festival in creating an incredibly eventful Big Stur Weekend.

This shopping partnership has attracted around 45 stall holders to provide an incredible array of Dorset made delights and locally made Arts and Crafts. Local food and drink producers will be tantalising taste buds with their wares along the pedestrianised area of Station Road, whilst, home grown crafters will be displaying and selling their special unique and exclusive items within The Exchange in the Stour Hall. Expect to find a variety of local foods including cheeses, cakes, meats, vegetables, chocolate and preserves amongst the open-air stalls. Whilst indoors, be enthralled by the array of beautiful and uniquely created jewelry, art, photography, woodwork, cards, clothing, glass makers, glassware to name but a few..

For a full list of stalls visit www.facebook.com/producersmarket



Marsh Lane, Henstridge, BA8 0TG

**This Venue is available
for hire
"For ALL family occasions"**

**Birthdays
Anniversaries
Celebrations
Meetings
Christenings
Weddings
Funerals
Carvery's
and Buffets
Charity Days and Events
Caravan Rally's**

"We can cater for your needs"

Please enquire:- Tel 01963 362789



Chris Hannam

01935 50 82 81 - 07950 33 75 76

**Elm Yard, Three Elms Inn, North Wootton
Sherborne DT9 5JW**

- Traditional and Contemporary Forge Work
- Design Service
- Gates and Railings
- Garden Architecture
- Balconies and Handrails
- Restoration
- Cast Iron Repair
- On-site Welding and Fabrication Service
- Shot Blasting and Painting Service
- Brick, Stone and Flintwork

chris@dorsetforgeandfabrication.co.uk
www.dorsetforgeandfabrication.co.uk

Services for Individuals

- Residential Property
- Wills, Probate & Tax
- Personal Injury
- Employment Law
- Equity Release Mortgages
- Powers of Attorney
- Motoring Offences
- Dispute Resolution

Services for Business

- Commercial Property
- Company Law
- Agricultural Matters
- Employment Issues
- Debt Recovery
- Licensing
- Commercial Disputes
- Business Advisory Service

Shaftesbury: 01747 440448
Sherborne: 01935 817736
Gillingham: 01747 822103
Blandford: 01258 440530
www.maclachlansolicitors.co.uk

MacLachlan SOLICITORS

**ROYAL BRITISH LEGION
MARNHULL BRANCH AND CLUB**
LEGION HALL, SODOM LANE, MARNHULL
TELEPHONE: 01258 820613
Clubhouse open hours
Mon-Thur 8-11.30pm, Fri 8-12pm, Sat-12-3pm, 8-12pm
SKITTLES (LEAGUE and FRIENDLY) - DARTS - POOL
LIVE ENTERTAINMENT
(see Blackmore Vale Magazine or ring for details)
BRANCH AND CLUB MEMBERSHIP NOW AVAILABLE
FAMILIES MOST WELCOME
Come along and see what we can offer you
Branch: branch@marnhullrbl.wanadoo.co.uk
Club: club@marnhullrbl.wanadoo.co.uk

Alternate Mondays
PRIZE BINGO
7.10pm
Open to everyone

CHAFFERS ESTATE AGENTS incorporating **ROY BARRETT ESTATE AGENTS**
Experts in local knowledge

SALES, LETTINGS, COMMERCIAL, SURVEYS
More Properties Urgently Required!
Gillingham * Shaftesbury * Sturminster Newton * Wincanton
Tel: 01258 473900



Do you have something special to say from Thank you, Happy Birthday to I love you? Full florist service available Local deliveries and Eflorist relay members

Say it with flowers

Station Road, Stalbridge, Dorset. DT10 2RQ
Tel: 01963 362355

Email: williamsflorists@live.co.uk
www.williams-florist.co.uk



Mon to Fri 9 - 5 and Sat 9 - 1
Large Free Car Park Opposite

Marnhull & Gillingham Badminton Club



Badminton for beginners

Monday club social night: 8–10pm (except bank holidays)

£25 Joining Fee

Adults £4.50

Family £7.00 (up to 2 adults & 2 children)

Juniors £3.00

ALL COACHING FREE (Badminton England Coach)

Loads of fun for children and families

Badminton Club Night

Tuesday club night: 7.00–10.00pm

First night free to new members

ALL COACHING FREE (Badminton England Coach)

Intermediate level players always welcome

Badminton senior night

Thursday senior league night: 8.15–10.15pm

The club is interested in players who wish to play at a league level.

The club participates in the Salisbury district league – div2 mens and div2 mixed and div3 mixed

Hinton St Mary Gardens Open

This year's Gardens Open Weekend to raise funds for St Peter's Church will be held on 17th and 18th June from 2 pm to 6 pm on each day. The Manor House Gardens will be open as well as over 20 other gardens in the village. This event takes place every two years and its financial success is essential to the future of the Church.

Cream teas and home-made cakes will be served in the Tithe Barn, and there will be plants, collectables and second hand books on sale. There will also be an exhibition of sculpture, including a number by local young people in the Manor Gardens. Admission £5.00 - children free. No dogs please

Ample free parking & disabled facilities.

Sturminster Newton Floral Group

In June the group will welcome Diana Guy who will be giving a talk entitled "Grow the Best and Throw away the rest". As usual the event will be held in the Stour Hall at the Exchange. The date is 14th and the time 7.30 pm. There will be light refreshments and a raffle and all visitors are welcome at £5 per head.

On July 12th we will welcome Katie Baxter who will give a demonstration entitled "Joy of Flowers". Please come and join us for an evening of fun.

University of the Third Age

John Avery gave us an intriguing account of the Tichborne Claimant. This was a court case that had enthralled Victorian England in the 1860's and 1870's. The reason for the intrigue was that the missing heir to the https://en.wikipedia.org/wiki/Tichborne_baronets Tichborne baronetcy, Roger Charles Tichborne had been assumed lost at sea. However, his mother, Lady Tichborne believed her son was still alive, (a belief not shared by the rest of the family, especially Roger's younger brother. As the courts had formerly declared Roger dead, the younger brother inherited both the Tichborne baronetcy and the family estates).

Lady Tichborne had placed a number of advertisements in various Australian newspapers requesting information on the fate of her son Roger Charles Tichborne. As might be expected a claimant came forward. His name was Arthur Orton. The case came to court in 1871 and enquiries made before the case came to court did confirm his identity as Arthur Orton not Roger Charles Tichborne. Much of the evidence was obtained by the private detective Jack Whicher, who the family had hired. (Jack Whicher was formally one of the original 8 members of the new Detective Branch at Scotland Yard and achieved fame for his involvement in solving the murder at Road Hill House, Rode, on the A361 just outside Frome).

The civil court rejected the Claimant's case, he was charged with perjury, and then in 1874, a criminal court jury decided that he was not Roger Tichborne and declared him to be Arthur Orton. The judge passed a sentence of 14 years, Orton was subsequently released in 1884. In 1895, he confessed to being Orton, but recanted this statement almost immediately. The rest of his life was spent in poverty and he was destitute at the time of his death in 1898. Intriguingly, the Tichborne family allowed a card bearing the name "Sir Roger Charles Doughty Tichborne" to be placed in the coffin before its interment and the name "Tichborne" was registered in the cemetery's records.

Our next meeting at 10am on the 1st June, at the Father's House, Shaftesbury, will feature, Richard Buton, Perfect Perfect. Details of all SGU3A groups and activities can be found at sgu3a.org.uk

Dorset Wildlife Trust

Summer Walks and Events 2017

Thursday, 22nd June: Morning Walk on Fontmell Down with DWT Warden, Steve Oliver. Meet at the National Trust car park at 10am. Numbers are strictly limited so please book in advance by telephoning 07824874273. No charge, but voluntary contributions welcomed for DWT.

Thursday 20th July: Mindfulness Naturally – run by Briony Baxter, DWT's Community Conservation Officer. Meet at 2.30pm at the Community Orchard, New Road, Broad Oak, Sturminster Newton. Booking is essential. Please telephone Roy Davies on 01258 880 699.

Saturday, 12th August: Evening Bat Walk with local bat expert, Chris Dieck. Meet at 8.30pm at Stour Meadows car park, Blandford Forum. £3 charge – all proceeds to the local Bat Group. Booking is essential as numbers are strictly limited. Please telephone Roy Davies on 880699.

REMOUS

Making you look good on paper...

DESIGN PRINT FINISHING LOGISTICS MAILING

01963 250 920

Crossword and Sudoku Answers

6 9 2 7 5 4 1 3 8	5 1 3 6 2 8 8 7	1 3 4 7 5 4 1 3 8
4 3 7 6 9 1 8 5 2	4 8 7 1 9 3 6 2 5	8 4 6 2 8 2 7 5 1 9
1 9 8 5 2 4 7 3 6	9 7 1 5 4 6 3 8 2	3 5 4 9 7 6 1 2 8
7 1 2 2 1 2 2 2	8 2 5 9 3 1 7 6 4	8 5 4 9 7 6 1 2 8
6 8 9 3 1 2 4 7 5	2 6 8 3 7 9 4 5 1	9 6 1 2 5 8 8 3 4 7
8 5 4 9 7 6 1 2 8	2 6 8 3 7 9 4 5 1	8 4 5 1 3 8 7 2 6 9
8 4 5 1 3 8 7 2 6 9	7 3 4 8 1 5 2 9 6	2 7 3 4 6 9 5 8 1
2 7 3 4 6 9 5 8 1	1 5 9 4 6 2 8 7 3	

ACROSS
1. Battic 4. Tosca 6. Moa 7. Genetics 8. Troy 11. Emmet 13. Anna 15. Triceps 16. Alchemy 17. Flat
19. Atlas 21. Dodo 24. Artesian 25. Owl 26. Briar 27. Eleven
NM0D
1. Basho 2. The Tempest 3. Cream 4. Twist 5. Siskin 6. Malt 9. Rural 10. Yacht 12. Eccles Cake
13. Aphid 14. Nomad 18. Alkali 19. Aster 20. Lisle 22. Orion 23. Oval

Hawes



Arborists

- All aspects of tree surgery
- Dismantling and felling
- Pruning
- Tree planting schemes - design to implementation
- Tree management and aftercare
- Hedgerow planting, aftercare and trimming
- Tree disorders and solutions
- Tree pest and disease analysis

Telephone 01747 850 253

NPTC Certified • Tech.Arbor.A Qualified
All work carried out to BS3998 standards

Escape to the country and
feel at home in our cosy
comfortable holiday cottage
with enclosed garden safe for
children and dogs

Holiday Cottage to let

Situated on a smallholding with direct
access to footpaths and surrounding
beautiful Dorset countryside.

Hampers of home grown vegetables available.

Accommodates 6 people including children

Dog friendly. Fully furnished to a high standard
with all appliances.

Overnight stays, weekends
and longer term lets welcome

01258 821037

Marnhull, Dorset

Nazareth Lodge

Residential Care Home Sturminster Newton

Rated "Outstanding" by the Care Quality Commission

AWARD WINNING HOME

2016 Great South West Care Awards

Regional Winners for:

Outstanding Contribution to Social Care – Camilla Trimble

Care Team & Palliative Care Team

2016 National Care Awards: Care Manager Finalist

"Silver" Food for Life Catering Mark

Awarded the highest accolade of "Beacon" status for "End of Life Care"

Full respite and day care services are available.

For further information or brochure please ring 01258 472511 or

email: care@nazareth-lodge.co.uk

www.nazareth-lodge.co.uk



Mindful

Supporting local people with memory problems

You can find us at the Mindful Café at The Hub, off Station Road, Stalbridge.

The café runs on the first Monday of each month, between 10.00 am and 12 noon.

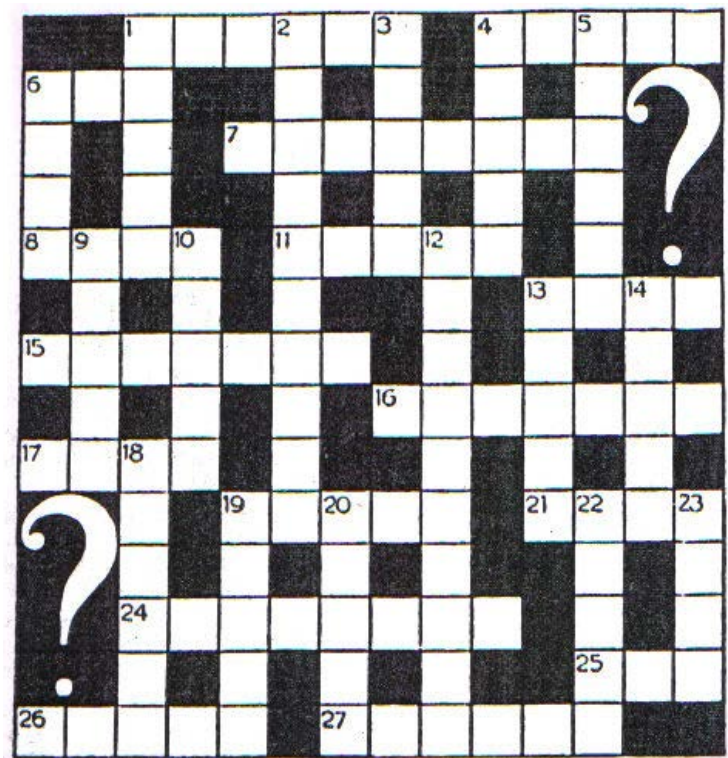


All welcome

If you would like to help and support Mindful, or for more information, contact:

Chair & Membership Secretary, Sally Nutbeem 01747 852153

(email snutbeem@gmail.com)



Hard Difficulty

7			9		
4			7	2	
			5		
3			1	4	5
	2	8	4	6	
	8				3
		9	1		5
	6		3		

Medium Difficulty

1					
3		8			
	8	3	7	9	
4					9
			3	7	6
		5	6		
4		1			
			8	9	7
	2		4		8

Child Okeford Flower Arranging Club

Our next meeting will be on the 20th June in Child Okeford Village Hall when we shall be decorating topiary trees. If you'd like to come along then just bring some flowers as all other requirements will be available from the sales table. The meeting starts at 2:15pm and there will be a break for refreshments mid afternoon. Further details from Sue Brown on 01258 863775

Child Okeford Film Night

Our current season concludes on Friday 23rd June when we shall be showing 'A United Kingdom' (12A). This is a biographical romantic drama about Prince Seretse Khama, future King of Botswana, and the political and diplomatic turmoil that arose when he married a British white woman, Ruth Williams, in the late 1940s.

Doors open at 7:00pm with curtain up at 7:30pm.

Refreshments available. Tickets £5 at the door or book in advance on 01258 860518.

ACROSS

- 1) Sea off the East coast of Sweden. (6)
- 4) Opera by Puccinni. (5)
- 6) Extinct flightless bird of New Zealand. (3)
- 7) The study of hereditary. (8)
- 8) Site of a famous siege in an epic poem by Homer. (4)
- 11) Old term for an ant or in Cornwall a tourist. (5)
- 13) One sixteenth of a rupee. (4)
- 15) Large muscle at the back of the upper arm. (7)
- 16) The medieval forerunner of chemistry. (7)
- 17) In music below true or normal pitch. (4)
- 19) North African mountain range. (5)
- 21) Extinct flightless bird of Mauritius. (4)
- 24) A well bored perpendicularly into water bearing strata laying at an angle so water is supplied by natural pressure. (8)
- 25) Eagle, snowy and horned are types of this bird. (3)
- 26) A prickly scrambling shrub. (5)
- 27) Number of players from each team on the field in an American football game. (6)

DOWN

- 1) A sumo wrestling tournament. (5)
- 2) Shakespeare play set on an enchanted island. (3-7)
- 3) Supergroup featuring Ginger Baker on drums. (5)
- 4) Dance craze of the 60's. (5)
- 5) Small yellowish green finch. (6)
- 6) Barley steeped, germinated and dried then used for brewing. (4)
- 9) Relating to the countryside. (5)
- 10) Medium sized sailing boat for cruising or racing. (5)
- 12) Pastry named after a town near Manchester. (6-4)
- 13) Small bug that sucks sap from plants. (5)
- 14) Member of a people continually moving to find fresh pasture for their animals. (5)
- 18) Compound that turns litmus blue. (6)
- 19) A daisy like plant with pink or purple rayed flowers. (5)
- 20) Fine smooth cotton thread used for stockings. (5)
- 22) Constellation named after a great hunter in Greek mythology. (5)
- 23) Shape of an Australian Rules Football pitch. (4)

All puzzle answers on page 32

Sutcliffe & Co
Chartered Accountants

We are a long established local practice at Old Bank House, Sturminster Newton, acting for a wide variety of local businesses and individuals.

We offer a full range of business advice, taxation and accounting services including

Self Employed Accounts Company Accounts

Self Assessment Tax Returns

Tax planning

Cash Flow and Business Plans

Management Advice

Corporate Planning VAT advice and returns

PAYE, CIS and Payroll

We provide a personal and professional service and look forward to assisting you in achieving your business objectives and meeting your statutory obligations

For an initial no obligation meeting
telephone Mitchell Langhelt, Ann Coward or
Nicky Huzal on

01258 472344

The co-operative funeralcare

- 24 hour service
- Free bereavement advice
- Pre-paid funeral plans

GILLINGHAM

2 High Street, SP8 4QT

01747 824738

SHAFTESBURY

Greenacre House, Salisbury Road, SP7 8BS

01747 858968

www.funeralcare.co.uk

Part of The Southern Co-operative

Time for a change?



◆ Proactive Estate Agency ◆

We offer a personal, thoroughly professional & proactive estate agency service that goes the extra mile to help clients.



So whether you are
selling or buying call ...

01258 830 860

Abbot & Slater

Market Cross, Sturminster Newton

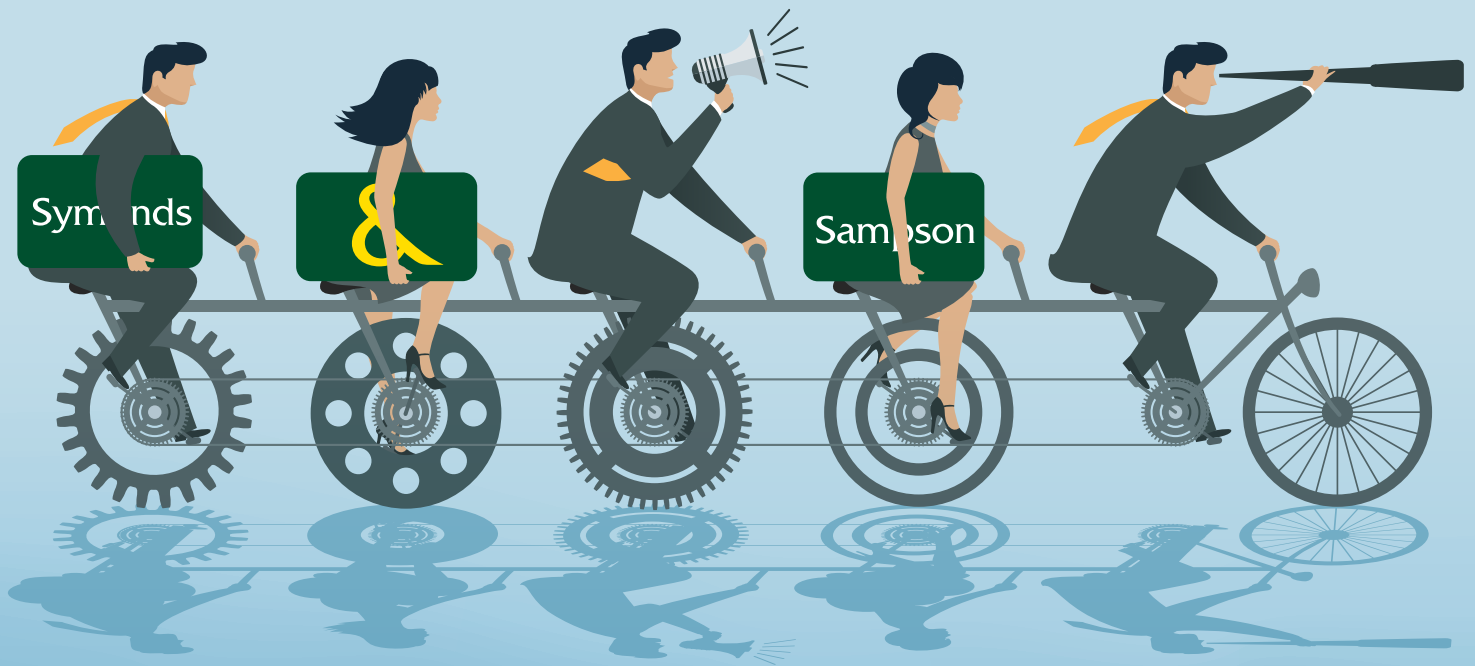
www.abbotandslater.co.uk



STURMINSTER NEWTON • BLANDFORD • LONDON

*property***matters...**

moving in the right direction



To find out how this award winning firm can help you telephone:

Sturminster Newton

01258 473766 (Residential Sales)

01258 474265 (Lettings)

01258 472244 (Rural and Planning)

or **Sherborne** 01935 814488

symondandsampson.co.uk

Symonds
& Sampson

ESTABLISHED 1858