

Marnhull Messenger



Original illustration by George Cox

www.marnhullmessenger.org.uk

February 2017 - Issue 71

From the Surgeries



What's new from our local doctors surgeries

page 7

Gardening Tips



Monthly tips from our village experts

page 3

From The Churches



All the latest news from the churches

page 14

From The Schools



The latest from our village schools

page 18

New Entertainment Feature

page 10-11



Blackmore Vale Inn Update

Hall & Woodhouse have confirmed that the sale of the Blackmore Vale Inn has been agreed – subject to contract. Estates Manager Peter Kitching said "The matter is in the hands of the solicitors and our understanding is that the purchaser intends to re-open the pub in due course. I hope you will appreciate I am not able to provide any further information at this stage."

The new owners are not yet in a position to comment on their plans for the pub, but we hope to have more information next month.

Notice of Temporary Road Closures

Wessex Water are scheduling the replacement of ageing water main and services to local properties in the area of Moorside. The closures are programmed as follows:

1. Tuesday 3 January 2017 to Friday 17 February - road closed from Wellpark, Moorside to the junction with Moorside (West).
2. Monday 20 February 2017 to Friday 3 March 2017 - road closed from Chapel Cottage, Red Lane to the junction with Moorhayes Triangle.
3. Monday 6 March 2017 to Friday 17 March 2017 - road closed from Moorhayes to Moorside
4. Monday 20 March 2017 to Friday 16 June 2017 - road closed from the junction of Moorside to the junction of White Way Lane with Rams Hill Lane.

Diversions via Rams Hill Lane will be put in place during the relevant periods.

Additional works will be carried out on two sections of Red Lane. Traffic control here will be carried out with two-way traffic lights.



G & A COOK

Motor Vehicle Services

Burton Street, Marnhull

Tel: 01258 820239

**General Repairs, Servicing,
MOTs (Cars & Motorcycles),
Brakes, Clutches, Diagnostics,
Tyres, Wheel Alignment**



ROBIN HILL STORES

POST OFFICE, CONVENIENCE STORE & DELICATESSEN



01258 820959



**Mon-Fri 8-5.30
Saturday from 8-1
Sunday 8-12.00**

**DELI COUNTER HAND CARVED HAM,
LOCAL CHEESES, OLIVES, SNACKS,
FRESHLY DELIVERED BREADS,
HOMEMADE SANDWICHES
NEWSPAPERS & MAGAZINES
A BIG RANGE OF HOUSEHOLD ESSENTIALS,
CARDS & STATIONERY, WINES, BEERS & SPIRITS**



Home delivery on newspapers, magazines and groceries. Delicious fresh veg & fruit, breads & cakes – delivered in daily.

Special orders catered for.

Daily essentials & deals on branded products too.

Full Post Office service + cash withdrawal, car tax, electricity,
gas & mobile top up, National Lottery, Foreign Currency.

Health Lottery, Teleflorist, Dry Cleaning.

Hampers & Gift bags made to order.

The Curtain Man

Curtains Carpets Upholstery
Roller/Venetian/Roman Blinds

**Free Measuring and Estimates
Expert Service – Competitive Prices**

Burton Street, Marnhull
Sturminster Newton DT10 1PH
Tel/Fax: 01258 821117 Mobile: 07802 744869
email: thecurtainman@btconnect.com

TURKS GARAGE

**Marnhull Road,
Hinton St. Mary,
Sturminster Newton
Established 1988**

**Cars & Light
Commercial**



MOT's



**SERVICING
& REPAIRS
Petrol & Diesel**

01258 472686

The Marnhull Butcher Adrian Curtis

Marnhull's own rare breed - use him or lose him!



Locally sourced high quality meats at competitive prices. Great selection of seasonal meats - poultry, pork, beef. Delicious homemade sausages and burgers.

Helpful advice if you're not sure how to prepare or cook some meats.

Burton St, Marnhull. Telephone orders taken. Local home delivery. 01258 820238



Welcome to your Marnhull Messenger

Chris Ryu - Messenger Editor

Reminder: New Deadline!

I'm sure it's going to take a while to get used to the new earlier deadline of 17th of each month, so I thought it best to publish a reminder. We had 9 articles miss the deadline this month. Fortunately for them, due to a surge in my paid work I was running a little late myself meaning that you all got in, but I can't say that'll be the case every month. Get your articles in before noon on the 17th or risk disappointment...

Remember - email me if you want an automated reminder each month.

Welcome to our new advertisers! With the Sturminster Exchange coming on board, I've created a new entertainment feature, which will no doubt grow over coming months. We're so lucky to have so much great live music in the village.

Starting next issue, we'll be featuring a different Marnhull business - finding out more about the people that provide vital services to the community. If you'd like to feature - get in touch! There'll be a waiting list, so get in quick...

Deadline For Next Issue

MID-DAY 17th FEBRUARY

E-mail all texts, announcements and other requests to:
editor@marnhullmessenger.org.uk

Marnhull Messenger Contact Details

Editor: Chris Ryu - editor@marnhullmessenger.org.uk
01258 821654 - 3 Corner Close, Marnhull, DT10 1PB

Webmaster: Chris Ryu - as above

Advertising: Rosie Gall - advertising@marnhullmessenger.org.uk

Treasurer: Bill Shannon - treasurer@marnhullmessenger.org.uk
01258 820890

Circulation: The Eveleighs - circulation@marnhullmessenger.org.uk
01258 821049 - Weavers House, Burton Street, Marnhull, DT10 1PS

Chairman: Ian Gall - chairman@marnhullmessenger.org.uk
01258 820484

Disclaimer
The opinions expressed in the articles and on the pages of the Marnhull Messenger are not necessarily those of the Marnhull Messenger. All the dates and details are as supplied by the contributing organisations. The Marnhull Messenger is not responsible for errors or omissions, accuracy of the content, nor the failure of any published event to go ahead. The letters and articles published in this magazine are accepted in good faith and the views expressed therein are not necessarily the views of the Messenger Steering Committee, whose decisions on publication are delegated to the Editor and are final.

This publication is provided for your use "as is" without warranty of any kind, either expressed or implied; inclusion of an advertisement for an event or service does not imply that they are endorsed by the Marnhull Messenger. The Marnhull Messenger will take all reasonable precautions to ensure that the content is socially and morally acceptable.

Privacy Policy
The Marnhull Messenger respects the privacy of organisations and persons who submit information for publication. Personal details, including photographs, will only be published if approved and submitted by organisations or individuals. No personal details will be given out or sold to any third parties, whether individuals, organisations or companies.

Garden Reflections for the month of... ...February

It is a beautiful January morning and looking out the window I am reminded what a great place Marnhull is to live. The sun is glistening on the newly restored weather vane on St Gregory's Church and the grass is all frosty, another few weeks and the bulbs I planted last Autumn will be bursting into life. It's a timely reminder that another great year of gardening is about to begin and all that hard work again.....but the fresh air and exercise is needed and the Radox Soak is ready.

When we bought our house here 18 months ago, downsizing was the brief, I just forgot to apply the rule to the garden! So in the Spring of 2016 I was ready for my first growing season but I still didn't know what was planted in the garden already. As I hoed the soil, I disturbed things with strange wiggly roots and had no idea what they were, so I tucked them back into the soil and they delighted us in the Autumn when an array of Hardy Cyclamen popped up above the soil. Primroses sprang up everywhere and a varied collection of Hellebores filled the borders.

Safe in the knowledge that gardening was in my genes, I sat down with a seed catalogue and merrily ordered all sorts of goodies. My great grandfather was a market gardener according to the 1881 census, my grandfather grew all the flowers for my wedding, my nan gave me my own flower patch in her garden and I fondly remember going to the allotment with my Dad - I also attribute my fear of worms to him, as he thought it funny to throw them at me!

I pestered people for knowledge and avidly watched Gardeners World and my hero Monty Don. I 'googled' unabated for answers on just about everything and was soon fully prepared to repel Carrot Fly, Blossom End Rot and Potato Blight and many other gardeners enemies. I left every Garden Club meeting convinced that I needed more Grasses, Herbs, Perennials, whatever they talked about, I needed itexcept for the Otters that is! I even reached an agreement with the worms.....you don't hurt me and I don't hurt you!

Everyone warned about being too over enthusiastic but I sowed everything I had, resulting in masses of seedlings, too many to pot on, nowhere to put them and an inability to murder them by putting them on the compost heap. Those that failed completely got replaced from the garden centre and against all odds I had quite a few plants ready to go in the ground when the time for planting out came. The established Strawberries and Raspberries began to ripen and the dog was regularly caught supplementing his five a day!

On Monty's advise, the carrots were carefully thinned, ensuring no carrot fly were about to bombard my little seedlings. My peas grew up their twiggy sticks and I couldn't wait for them to fatten - at the first taste of my own fresh peas I was 8 years old again back on my dad's allotment! and to top it all they only went and scooped 1st prize at the Marnhull Show.....beginners luck??

The beans took somewhat longer but once they started producing, they didn't stop. The tomatoes though failed miserably, one day they were fine, the next they looked as if a whirlwind had hit them, I watched Monty the following week and he was having the same problem so that was okay!

We had also inherited a huge Apple tree, as well as providing lovely cool shade for the dog an abundance of apples meant we could give some away, but I soon discovered nearly everyone in Marnhull has access to apples! So I set about producing all manner of pies, crumbles and Tarte Tatins. The dog decided to feast on the daily 'fallers' as well, but that didn't go down too well!

So that was 2016 and now 2017 is looming. I am a little more knowledgeable and will not be so over eager. I have resolved to not plant quite so much and not too soon but time will tell.

Now where's that new gardening catalogue?.....what can I order?

VB Novice Gardener! Marnhull Garden Club

Village Hall Bingo

SAVE THE DATE!

Friday 7th April

Doors open 7pm to start at 7:30pm

Paws for thought...

When you take your plastic BAGS for a walk,
remember to take your dog.

- Mary/B. Marnhull resident

Remember: Deadlines are now 17th @ Noon

Annual Diary 2017

All events are held at the Village Hall unless otherwise stated.

For Village Hall bookings please call
01258 821427 OR 07786 667796

February

1st - Table Tennis Club @ 14:15
1st - Zumba Dance Fitness @ 19:30
2nd - Baby and Toddler Group @ 09:30
3rd - Lunch Club @ 12:00
3rd - Marnhull Entertains Bournemouth Symphony Orchestra @ 19:30 St Gregory's
6th - Table Tennis Club @ 14:15
6th - Parish Council Meeting @ 19:00
8th - Table Tennis Club @ 14:15
8th - Mother's Union @ 14:30
Methodist Church
8th - Mother's Union AGM @ 14:30 Methodist Church
8th - Zumba Dance Fitness @ 19:30
9th - Baby and Toddler Group @ 09:30
10th - The Blackmore Vale Art Group - Drawing/ Painting all day @ 10:30
10th - Quite Half Hour of Prayer @ 12:00 Church of our lady
13th - Table Tennis Club @ 14:15
13th - Women's Institute 'Reading Matters' Jill Kieran and Pat Budden @ 19:30
14th - Marnhull Garden Club AGM and American supper @ 19:30
15th - Table Tennis Club @ 14:15
15th - Zumba Dance Fitness @ 19:30
16th - Marnhull Yarners @ 13:30 Laburnum Cottage
17th - Marnhull POPPin Cafe @ 10:00
20th - Table Tennis Club @ 14:15
22nd - Table Tennis Club @ 14:15
22nd - Zumba Dance Fitness @ 19:30
23rd - Baby and Toddler Group @ 09:30
27th - Table Tennis Club @ 14:15
28th - Moviola 'The Girl on the Train' @ 19:00

March

1st - Table Tennis Club @ 14:15
1st - Zumba Dance Fitness @ 19:30
2nd - Baby and Toddler Group @ 09:30
3rd - Lunch Club @ 12:00
6th - Table Tennis Club @ 14:15
6th - Parish Council Meeting @ 19:00
8th - Table Tennis Club @ 14:15
8th - Zumba Dance Fitness @ 19:30
9th - Baby and Toddler Group @ 09:30
10th - Te Blackmore Vale Art Group - Gillian Lacey "Learning to see" A drawing day @ 10:30
10th - Quite Half Hour of Prayer @ 12:00 Methodist Church
13th - Table Tennis Club @ 14:15
13th - Women's Institute 'Images of Dartmoor and the Four Seasons' Tony Burgess @ 19:30
14th - Marnhull Garden Club "The New Forest from Conqueror to National Park" by Peter Roberts @ 19:30
15th - Table Tennis Club @ 14:15
15th - Zumba Dance Fitness @ 19:30
16th - Baby and Toddler Group @ 09:30
16th - Marnhull Yarners @ 13:30 Laburnum Cottage
17th - Marnhull POPPin Cafe @ 10:00
20th - Table Tennis Club @ 14:15
22nd - Table Tennis Club @ 14:15
22nd - Zumba Dance Fitness @ 19:30
23rd - Baby and Toddler Group @ 09:30
27th - Table Tennis Club @ 14:15
28th - Moviola 'The Light Between Oceans' @ 19:00
29th - Table Tennis Club @ 14:15
29th - Zumba Dance Fitness @ 19:30
30th - Baby and Toddler Group @ 09:30

April

1st - Marnhull Pantomime presents 'Pantamonium' @ 13:00 & 18:00
2nd - Marnhull Pantomime Presents 'Pantamonium' @ 13:00
3rd - Table Tennis Club @ 14:15
3rd - Parish Council Meeting @ 19:00
5th - Table Tennis Club @ 14:15
5th - Zumba Dance Fitness @ 19:30
6th - Baby and Toddler Group @ 09:30
7th - Lunch Club @ 12:00
7th - Village Hall Easter Bingo @ 19:00
10th - Table Tennis Club @ 14:15
10th - Women's Institute Annual Meeting with Cheese and Wine @ 19:30
11th - Garden Club "Scented plants throughout the year" Marcus Dancer @ 19:30
12th - Table Tennis Club @ 14:15
12th - Zumba Dance Fitness @ 19:30
13th - Garden Club Visit to Castle Gardens @ 18:45
14th - The Blackmore Vale Art Group Drawing/ Painting all day. @ 10:30
14th - Quite Half Hour of Prayer @ 12:00 St Gregory's
17th - Table Tennis Club @ 14:15
19th - Table Tennis Club @ 14:15
19th - Zumba Dance Fitness @ 19:30
20th - Marnhull Yarners @ 13:30 Laburnum Cottage
21st - Marnhull POPPin Cafe @ 10:00
24th - Table Tennis Club @ 14:15
25th - Moviola 'A United Kingdom' @ 19:00
26th - Table Tennis Club @ 14:15
26th - Zumba Dance Fitness @ 19:30
27th - Baby and Toddler Group @ 09:30

Marnhull Garden Club



Alan Eason's talk on Wall Shrubs and Climbers brightened up a dull winter evening with lovely slides of healthy plants – and also gave some examples of very bad plantings.

Walls provide shelter, radiated warm and drier soil than surrounding areas. However, some plants given such surroundings can become a real problem – he showed a wall which required scaffolding in order to tackle an ivy which had enjoyed years on untrammelled growth into gutters, roof tiles and anywhere it could reach. And then a beautiful wisteria on a rented house, which had reached the gutters, destroyed downpipes and managed to get its roots through the wall into the house and was enjoying spreading behind a bookcase before it was discovered! And a lovely clematis-covered wall a few feet from a large pond – the only way of pruning would be for a ladder in the water!

He gave a brisk trot through the types of shrubs and climbers available, and stressed the need for forward-thinking i.e. a clematis and a rose growing together will need to be pruned but the best time for one is not the best for the other – and that the type of support is also crucial – to weak, it collapses, too large it becomes bare and obtrusive. Plenty to think about in the coming months.

Next month is the AGM followed by American Supper – please remember to bring a plate of food to share – **finger food only**.

SB

NB: Nellie Moser was not “a flighty piece” – the name was created by the hybridiser Marcel Moser. My apologies.

PARISH MUTTERINGS

The top topics being discussed this month:

Dog fouling campaign started

'BAG IT AND BIN IT.....MOST PEOPLE DO'

A review of Standing Orders is continuing

Street Cleaning

Telephone Boxes being taken out of service

St Gregory's Churchyard maintenance being discussed

Cross in Cemetery fixed

Defibrillator training took place and in all your own interests more of you should attend next time

Does the village need more Defibrillators?

There are vacant plots available on the parish allotments on Sodom Lane. Annual rents are very reasonable so if you like the idea of taking up an allotment and growing your own produce as spring comes along, then contact the clerk to the parish council who will sign you up on 821231

Mobile phone mast resurrected, company interested do you want it?

All of the above are currently being dealt with by your Parish Council If you would like to learn more or wish to comment please call 821636 or email trevor.mpc@gmail.com

**Recruiting Councillors are you interested?
Contact Trevor Vaughan call 821636 or email
trevor.mpc@gmail.com**

Women's Institute



I cannot do justice to Nick Lalor's talk “One Man's sound is another man's cacophony”. Just the basics. All sound is caused by vibration, and the human ear is incredibly able to adapt to a huge range of pressure fluctuations which enable us to hear.

This is done, at its simplest, by tiny hairs in the inner ear (cochlea) – which once destroyed are never regrown, thus hearing loss can only be countered by artificial means. Our ears are most sensitive to the cry of a child (although it is interesting that the voice of males eventually breaks, but that of females does not), and it is the highest frequency range of hearing which is destroyed first, probably because these hairs are the first to encounter the pressure wave of sound.

He played a note on a violin, and the same note on the recorder. Whilst the two sounds were identical in pitch, the violin string vibrates at many frequencies whereas the recorder only has one dominant frequency, thus fewer harmonics. We could all hear the difference. And then a teaspoon tapped at two places on the rim of a cup – two different sounds because of the effect of the cup handle.

Sound propagation has a domino effect, or like ripples in a pond as it travels – it is the pressure disturbance that travels, not the actual particles of air. The sound barrier is caused by the aircraft travelling at or faster than the speed of sound (760 mph) bursting through the barrier of the pressure waves building up in front of and behind it – thus the double bang that is heard as both waves pass over a ground observer.

It was a fascinating talk and much appreciated, though he was unable to explain the phenomenon of Selective Deafness in Husbands and Children – a whole new subject!

Next month, 13th February, it is “Reading Matters” with Jill Kieran & Pat Budden. Visitors are always welcome.

SB



Show The Love for Marnhull

Marnhull WI are this year involved in wearing and sharing green hearts to “SHOW THE LOVE” for Marnhull and our beautiful surroundings from Climate Change.

Members are busy making Green Hearts to wear and display in places around the village on and around Valentines Day.

Margaret Bunch



www.mikenelsonphotography.co.uk

16 Burges Close, Marnhull, Dorset, DT10 1QQ

Tel: 01258 821036

Mob: 07944 162712

email: hello@mikenelsonphotography.co.uk

**PRIVATE PIANO
TUITION**

**By experienced
teacher**

Beginners to Advanced

All ages welcome

Tel: 01258 820 420



**Stalbridge & Marnhull
Veterinary Surgery**
Building 12, Gibbs Marsh Farm
Stalbridge

Provides Stalbridge, Marnhull and the surrounding
villages with a friendly, caring service for dogs,
cats and other pet animals.

Plenty of free parking.

For an appointment please telephone

01963 548240

*Free first consultation, worth
£30, for all new clients*

15% discount for the over 60s

www.smvets.co.uk



**Professional Foot Care
in your Home**

Corns, calluses, problem nails etc.
Friendly, female practitioners

Foot Care At Home

01258 820203 email: gillian@bmfootcare.co.uk

www.bmfootcare.co.uk

PESTWRIGHT

THE COUNTY MOLE

CATCHER

Complete pest control services

Friendly, reliable service

BPCA qualified,

Insured

Call Jim on

01963 362292

Happy Pets and Home Service

House Sitting

Pet Care

Garden Care

Painting & Decorating

Competitive Rates

Call Juliet: 07773 566425

01495 790906

Dorset Stone Memorials

**Specialists in the manufacture of individual
memorials in Stone, Slate, Marble & Granite**

Our brochure is available to
download from our website.

We also supply other stone
related products such as:

- Fireplace surrounds & hearths
- House plaques
- Pet stones
- Architectural stone products
- Garden ornaments



Contact: 01747 811602 (works) • 01202 698075 (office)
Email: sales@dorsetstonememorials.co.uk

www.dorsetstonememorials.co.uk

**Peter Jackson
Funeral Services
at
Henstridge**

**Independent Family owned and run
Funeral Directors
24 hour service
Private Chapel of Rest**

Telephone: (01963) 362570

Accountancy Plus
Chartered Accountants and Tax Consultants
(Dorset) Limited

• Quick Books & Sage Expertise
Accounts
• Personal & Corporate Taxation

• Management
• Book-keeping,

01258 820709

Email: info@accountancyplusdorset.co.uk
Contact: Mr Kim Harden, FCA, FCCA
4 New Street, Marnhull DT10 1PY

From The Surgeries



YOUR NHS – Working together to shape Dorset's Health

Over the past two years, the NHS in Dorset has been carrying out a major review of health care services in the county and detailed plans are being formulated for the future. These proposals are now available for public consultation until the end of February.

You can find out more at the Poppin Café in the Village Hall on Friday 17th February between 10.00 & 12.00. There will be the opportunity to pick up a consultation document and questionnaire and to find more about the proposals.

Local residents are encouraged to take part in this consultation to give their views about proposals that could see major changes to acute hospital and community care services across Dorset. If agreed, the changes will help Dorset to deliver its forward-looking five year plan for improving health and care services, which are published in the local Sustainability and Transformation Plan.

You can also find information about the proposals at www.dorsetsvision.nhs.uk

Parking at Sturminster Newton Medical Centre & the Exchange

The medical Centre in Stur, continues to experience difficulties with parking for patients and for genuine visitors to the Exchange next door. Parking bays are as follows: The Green bays are short stay for patients and should only be used whilst attending appointments.

The Red bays are for permit holders which include spaces for doctors. Please do not park in these bays, as from time to time doctors need to leave urgently to attend to patients in their homes and they need to be able to park quickly on their return.

White bays are for short stay parking only. These are for visitors to the Exchange and other offices on the site. They are not intended for all day parking for workers or residents of Sturminster Newton.

Other car parking is available in the town and we would like to ask everyone if they could please be considerate in their parking habits. Many patients find walking any distance quite difficult, so it is important they can park near to the entrance.

We will continue to monitor the situation over the next couple of months. When polite notices are placed on offending vehicles we receive a barrage of complaints and abuse. This is really unacceptable and we need to work together to make the best use of the spaces we have available for our patients.

Thank you in advance for your cooperation.
Jane Dawes - Managing Partner

Village Hall Hire Charges For Weddings & Parties

9 a.m. to 1 p.m. £30.00 2 p.m. to 6 p.m. £30.00

6 p.m. to 11.30 p.m. (midnight on Sat and Sun) £50.00

Wedding hire... £150 per day

Booking Officer: 01258 821427



News from the Nick.
Combating crime
in your neighbourhood
PC 2146 Phil Sugrue
07500 816 258



This is my first time of writing in the Messenger as I am now your new PCSO for the Marnhull and the wider rural area. Some of you will already know me as I have worked in Sturminster Town for nearly 10 years and due to Kate Hann having left for the bright lights of Ferndown, I have decided to take the plunge and take on the rural patch!

On Friday 16th December I attended the POPPin café at the village hall, I was pleasantly surprised to see how well supported this was and spoke with many of the attendees. I also enjoyed a cup of tea and a slice of the most delicious ginger cake, I will return.

On an official note telephone SCAMS continue please be vigilant do not give out any personal details. There are a few pointers below:-

- **NEVER give out your pin number or bank details to ANYONE who calls you no matter who they claim to be or where they claim to be from**
- **NEVER send cash in a taxi or via courier**
- **NEVER send bank cards anywhere – always keep them with you**

Remember HANG UP ON FRAUDSTERS

Report scams to Action Fraud on line to www.actionfraud.police.uk or by phone to 0300 123 2040

There have been no reports of any crimes over the Christmas and New Year period.

PCSO 5352

Mandy Robinson

Sturminster Newton Rural
NPT



Village Hall Supporters Club

Supporters Club Christmas Draw, held on 12th December at the WI Christmas Party

Prize	Ticket	Surname	Firstname
£100	234	Young	Mrs PA
£60	192	Marnhull	Garden Club
£50	151	Marnhull	Music Society
£50	337	Lalor	Inger & Nick
£30	189	Evans	Mrs M
£30	166	Hopkins	CA & AC
£25	222	Couzens	John
£25	350	Tacon	Robert
£20	243	McTaggart	Mrs J
£15	288	Chisman	Deborah & Adrian
£10	87	Scaife	PA & Mrs M
£10	287	Chisman	Deborah & Adrian
£10	372	Hole	DJ

HOME CARE

Helping keep your independence whilst in your own home



ANGEL HOLISTIC CARE

We provide flexible tailored packages of care and services to suit your individual needs

01258 821640

07769 157553



MARY C.

COMPLEMENTARY THERAPIST, MAR

AROMATHERAPY, FACIALS,
MASSAGE, REFLEXOLOGY & REIKI

Relaxing treatments tailored to individual needs.

GIFT VOUCHERS AVAILABLE

Call Mary Colohan on
Marnhull (01258) 821422

Natural Beauty



Mobile Beauty Therapist

*Beauty Treatments
in the Comfort of your own Home*

MANICURE / PEDICURE
WAXING • SHELLAC
FACIALS • MASSAGE
LASH / BROW TINTING
PAMPER PARTIES

For More Information Call:

07920 269664

E: kellyrbrady@hotmail.co.uk
W: www.kellynaturalbeauty.co.uk

LAVENDERS GREEN

Complementary therapies

Aromatherapy
Therapeutic massage. Reflexology.
Reiki and Yoga tuition

Tanya Green ITEC
Traditional Yoga Association
Tel. 01258 820410
m. 07729 301387

Register of Exercise
Professionals
tanyaagreen@btinternet.com

The Barn Bed & Breakfast

Quiet, Comfortable and Friendly
on the edge of the village

Hillside
Marnhull
01258 820912

www.thebarnbedandbreakfast.co.uk

THE OLD MALHOUSE

BED & BREAKFAST
& SELF CATERING

Carraway Lane
Marnhull

01258 821514
07773329510

www.theoldmalhouse.uk.com

PGM

Pauline Mitchell

Soft Furnishing,
Dressmaking
&
Alterations

01747 853509

*20 years experience
The Chimes,
3 St. Rumbolds Road,
Shaftesbury,
SP7 8NE*

The Old Bank Bed & Breakfast

*Comfortable, friendly,
Family Home
In the centre of the village*

The Old Bank,
Burton Street, Marnhull
01258 821019
enquiry@theoldbank-marnhull.co.uk

PRIMROSE COTTAGE

Burton Street, Marnhull, DT10 1PP

A romantic retreat

Luxury Holiday Cottage for two
Short Breaks or Weekly Lets

Please contact
Rachel Oxford: 01258 820850
www.primrosecottagedorset.co.uk

Royal British Legion



When everything came in over the Remembrance fortnight and was counted up the total just for that period was a fraction under £3,000 so Marnhull give yourselves a pat on the back. That is a tremendous total for such a small village and credit mainly due to our Poppy Appeal Organiser Val Eslick for coordinating the whole thing.

Of course collecting goes on all year and it would be remiss of me not to mention Lyn Bartlett's Bingo which has raised £3,393 in 2016 and £6,446 in the three years it has been running. This year's Christmas bingo which attracted over a hundred punters made a profit of £850. It takes a lot of effort to run the bingo and Lyn does a tremendous job so come and have a game and support a good cause when the bingo returns after the winter break on March 6th.

Clapper Chaos a handbell group from Poole came up to entertain us on Sunday 27th November. Everyone who came said it was very enjoyable and the consensus was that it was not anything like what was expected. The three members showed great dexterity in getting to the correct bells at the correct time and played a wide range of pieces from carols through classical to the Pogue's 'Fairytale of New York'. At the end of the session there was an auction of cakes that with the entry donations meant that £141 was raised for the poppy Appeal.

We have been trying to start a crib night on the second and fourth Mondays of the month. It has had mixed success but we will persevere for a while and see if it picks up. The first one in February will be on the 6th. You do not need to be a member to begin with so feel free to come down and give it a try be you a beginner or an expert we will mix and match.

The jumble sale on January 14th was also a great success making a profit of £314. The next one is on March 4th so if you have anything from small pieces of furniture to books and bric-a-brac give me a call, I will collect.

As usual Tony has laid on a full programme of entertainment with something to suit all tastes from Country, to 60's pop and up to heavier rock. Entry for non-members is a modest £2, so don't sit in front of the TV come down and be assured of a warm welcome.

Branch business contact Jack Whitehead on 01258 820800 or email whitehead795@btinternet.com

Marnhull Ramblers & Shorts

Get Fit in 2017!

Marnhull Shorts gave twenty nine walkers the opportunity to keep up their New Year's resolution to 'get fit' when we met at the Crown for our first walk of the year. After a number of really wet and grey days in early January, the morning of the Marnhull Short dawned bright and clear, if a little blustery, and Audrey led us on the WI Triangle Walk around Moorside. Audrey's decision to keep to the roads for this walk was wise as the footpaths in the village had become very muddy and slippery due to the long period of damp weather we have experienced. As usual, a number of the walkers stayed on to enjoy a sociable lunch at the pub.

Our next Marnhull Short walk is on 8th February starting at the Ship Inn at West Stour and will follow the Stour Valley Way, skimming to the north of Fifehead Magdalen and crossing the River Stour at the Stour Provost water mill. We need volunteers to organise walks, please contact Ros Eveleigh on 821049 if you are interested in helping out.

Wanted To Rent

2 bedroom cottage for long-term rent wanted. Little garden and a place for my car. Retired, non-smokers, no pets. References available. Max £595 pcm. If you can help we would appreciate to hear from you.

Call Ann on 01747 840834

Marnhull Village Care

A warm welcome to the village and support for the community Since 1976

Are you having difficulty getting to and from hospital, the surgery or other treatment facilities? Marnhull Village Care have a Voluntary Car Service to help those in the village who have no transport. You just need to make donations to cover petrol. Further details and bookings can be made by calling either Sue Bailey 820441 or Mike Wilkins 821476.

We are always looking for volunteers to help, either for driving or for general assistance. If you have spare time and would like to be part of this community service, please contact the Chairman, Trevor Vaughan on 01258 821636.

Similarly, if you need help, or know of anyone who does, please telephone the above number and we can try to sort something out.

Marnhull Music Society - January

Ian Treece presented the Music Society with a wonderful, varied selection of some of his favourite music. A delightful and lively programme ranging from Bach and Vivaldi through Widor, Mozart and Handel, to Glen Miller, Nat King Cole and The Beatles!!

Chopin's Piano Concerto No. 2 was memorable and a Beethoven String Quartet jolly and lively. The haunting Romance from The Gadfly, played beautifully by Tasmin Little and Grieg's Wedding Day at Troldhaugen were favourites! Altogether a programme to remember with the utmost pleasure.

Jean Shiner.



3rd Friday of each month

10-12 noon, Marnhull Village Hall

COME & ENJOY FRESH FAIRTRADE COFFEE OR TEA, BISCUITS or HOMEMADE CAKES

Meet old friends, make new ones

Put the World to Rights!

Read the papers, do a crossword, play cards, dominoes, or just sit, chill & chat

All welcome - we would love to see you



The Marnhull POPPIN Café is a non-profit making community project.

Contact Linda 01258 820131



THE CROWN INN *at Marnhull*



A beautiful 16th century coaching inn, notably featured in Thomas Hardy's 'Tess of the d'Urbervilles'

Delicious home cooked food, Badger real ales & cosy country B&B

Crown Road

Marnhull

DT10 1LN

01258 820224

Info@crowninn-marnhull.co.uk

www.crowninn-marnhull.co.uk



THE EXCHANGE

Box Office: 01258 475137
www.stur-exchange.co.uk



AN AFTERNOON WITH ANITA HARRIS

Wednesday 22nd February
2pm Tickets £10



6 HANDS with John Williams, John Etheridge and Gary Ryan.

Friday 24th February
7:30pm Tickets £20



ELO AGAIN

Saturday 25th February
7:30pm Tickets £20



A NEW FLAME - The Songs of Simply Red.

Friday 3rd March
7:30pm Tickets £15



HOWARD JONES with support.

Wednesday 8th March
7:30pm Tickets £23



PROF. ROBERT WINSTON - Modifying Humans.

Thursday 9th March
7:30pm Tickets £17/16



THE QUO EXPERIENCE

Saturday 11th March
7:30pm Tickets £18/£16



GEORGIE FAME - Live in concert.

Saturday 18th March
7:30pm Tickets £18

ARTSREACH
in association with
MARNHULL ENTERTAINS
presents
BSO Resonate Strings



The BSO Resonate Strings are five gifted musicians, each of whom represents one of the five string sections of the Bournemouth Symphony Orchestra.

This engaging concert will reflect the wonderful diversity of the classical string repertoire featuring music from Vivaldi to Brahms, Mozart to Puccini, and Handel to Astor Piazzolla

At St Gregory's Church
Friday 3rd February at 7.30pm

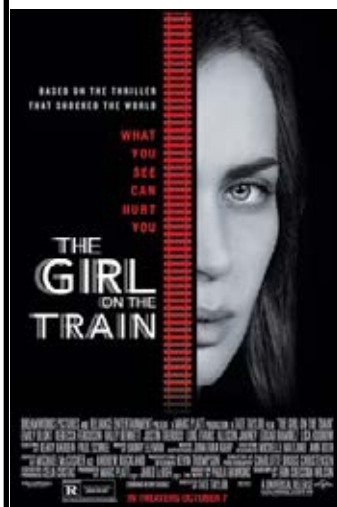
Doors and licensed bar open 7.00 pm

Tickets: £10, £6 under 18s, £30 family

Available from:

Robin Hill Stores - 01258 820959
or Marnhull Stores - 01258 820116

DORSET MOVIOLA
in association with
MARNHULL ENTERTAINS
presents
The Girl on the Train



Commuter Rachel Watson (Emily Blunt) catches daily glimpses of a seemingly perfect couple, Scott and Megan, from the window of her train. One day, Watson witnesses something shocking unfold in the backyard of the strangers' home.

Rachel tells the authorities what she thinks she saw after learning that Megan is now missing and feared dead. Unable to trust her own memory, the troubled woman begins her own investigation, while police suspect that Rachel may have crossed a dangerous line.

In Marnhull Village Hall
Tuesday 28th February at 7.30pm

Doors and licensed bar open 7.00 pm

Tickets: £5.00

Available from:

Robin Hill Stores - 01258 820959
or Marnhull Stores - 01258 820116



THE LEGION CLUB



FIRST CHOICE FOR:

Club and Society venue
Birthday parties
Wedding and family celebrations
Dinner dances
Fund raising events
Free Skittle alley

EXCELLENT FACILITIES:

Adaptable arrangements
Meeting room
Bar
Barbecue
Safe garden
Pool table/darts

Art classes every Monday and one Thursday.

Short mat bowls Friday 2 to 5pm.

Sat. 4th Feb. - Stage One

Sat. 11th Feb. - Silhouettes

Sat. 18th Feb. - Wonky Donkeys

Sat. 25th Feb. - Nitelite

Sat. 4th March - Just Bertie

Entry free to members others £2 on entertainment evenings

The CLUB may be booked for private functions at reasonable rates.

To arrange viewing, check availability, discuss your requirements or apply for membership contact Tony on 820397 or E-mail jack@whitehead001.fsnet.co.uk

BARTLETT

CONTRACTORS LTD

AGRICULTURAL CONTRACTORS
COMPLETE AGRICULTURAL CONTRACTING SERVICE

CIVIL ENGINEERS: HEAVY AND RURAL
OPERATED PLANT HIRE, HAULAGE, LANDSCAPING, FENCING,
LAND DRAINAGE, HEDGE TRIMMING,
LAKE AND POND CONSTRUCTION

TRACK REGENERATION
POTHoles TAKEN OUT IN ONE PASS,
QUARTER THE PRICE OF RESTONING THE SURFACE. CEMENT
CAN BE INCORPORATED



SUPPLIERS OF OOLITIC LIMESTONE, TURF, TOPSOIL,
SAND, GRAVEL, SCALPINGS AND MORE

01258 472419

Web: www.bartlettcontractors.co.uk



All aspects of building work undertaken including:

- **Extensions**
- **New Builds**
- **Roofing**
- **Renovations**
- **Loft Conversions**

Camelot Builders Ltd
Farm Office
East Lawn Farm
Lawn Crossroads
Gillingham
Dorset SP8 5QN
www.camelotbuilders.co.uk

Tel: 01747 835422

email: info@camelotbuilders.co.uk



WORD of MOUTH

HOME IMPROVEMENTS

PROFESSIONAL, RELIABLE, LOCAL

- Painting – interior/exterior
- Decorating
- General building maintenance
- Guttering – clearing/replacing
- Roof repairs
- Bricklaying
- Re-pointing
- Carpentry
- Tiling
- Paving
- Window replacement/installation

Please call Andy for a free quote

Marnhull 01258 821427

Mobile 07939 196384

Email: yaffle1@hotmail.co.uk

For more information please visit:
www.marnhullstone.co.uk



SUPPLIERS OF NATURAL AND CUT STONE:

RANDOM DRESSED
SAWN SPLIT
CHISEL FACED ASHLAR
WINDOW SURROUNDS
DECORATIVE WALLS



FIREPLACES

ASHLAR

FLOORING

Dean Harris (Quarry Manager): 07771 684647
Office: 01258 472419
Whiteway Quarry, Whiteway Lane, Marnhull,
Dorset, DT10 1NQ

GENERAL BUILDER STONEMASON

reliability guaranteed

**Extensions ~ Garages ~ Garden Walls ~ Repointing ~ Chimneys
Lead Work ~ Rendering ~ Plastering ~ Patios**

**Many satisfied customer references if required
Probably the cheapest around**

No VAT

**Ring Barry 01258 820010 (evening) 07966 550081 (day)
5 Hardy Close, Marnhull DT10 1LG**

Dry Stone Walling and Paving

All types of stone walling undertaken
Landscaping
Fencing



Patrick Houchen
DSWA member
CIS registered
01963 371123
07791588141

www.yenstonewalling.co.uk



PLUMBWOOD

for all domestic plumbing
From tap repairs to new
bathrooms

*Tiling and Woodwork projects
also undertaken*

Call Tim or Helen Cronin:
01258 820520 / 07780 673053

R&S LEWIS JOINERY

*We design & make
fitted wardrobes
bookcases & cupboards.*

*Hardwood windows
& doors*

Ham Lane Marnhull
01258 820467
Workshop 01963 363862

**vale
electrics**

Reliability Guaranteed

8 Plowman Close
Marnhull

Dorset DT10 1LB

T: 01258 821420

M: 07740403033

E: valeelectrics@hotmail.co.uk



Far MORE PEACE OF MIND

At Farnfields Solicitors we
always put your interests first,
that's why we have been in
business since 1936.



At Farnfields Solicitors you can always expect a warm and friendly welcome combined with a high level of service, dedicated expertise and transparent straightforward pricing. You will find, at every stage, that we put our clients' interests first. That's why we have been in business since 1936.

All in all, when you choose Farnfields Solicitors you can expect to receive far more peace of mind.

To find out more e-mail: info@farnfields.com or visit www.farnfields.com

Farnfields
SOLICITORS



GILLINGHAM 01747 825432 | SHAFTESBURY 01747 854244 | STURMINSTER NEWTON 01258 474270 | WARMINSTER 01985 214661

Thoughts from the Rector

A quiz question I came across recently:

How much of their DNA does a human being share with a banana?

Correct answer: 52%

Can this be true? How amazing! Does this mean that two bananas make one human being?

Should I greet a banana as my half-brother before I eat it?

Joking aside, there are often more similarities between things than we think. Or, to put it in another way, when we get down to the basic components, differences seem to be less than we are inclined to think.

This is something which has been borne in upon Christians more and more over the past century or so, as there has been a focus upon, and prayer about, Christian Unity. Starting from a point where people of different denominations and traditions focused solely on those things which divided them and where they were likely to say: "On no account would I share in worship with them" – perhaps even: "I wouldn't be seen dead in that church/chapel" etc, we have more and more been encouraged to focus on the fundamental aspects of our faith and practice that unite us and less on our points of divergence.

This is not to say that differences no longer exist, but that in focusing on what we have in common, we hope to be more effective in witnessing to our faith and putting it into practice in our community.

One likes to think that Marnhull Village Care, and the Marnhull Messenger, started as joint ventures between the churches of the village, are a case in point.

Would that the world would be more ready to learn this lesson: to look for points of agreement rather than to focus on (even rejoice in) those things which divide.

The conflicts in the Middle East, Syria and the Yemen in particular, and South Sudan, cannot be brought to an end as long as those concerned see only their differences, even forgetting, it seems, their common humanity. In political discourse in our own country, people habitually seem to 'talk up' their differences, and not to look for common goals to which all might aspire.

Between young and old, within families and communities, wherever people come together, the temptation may emerge to focus on that which divides rather than that which unites. When next you find yourself tempted to act in that way, remember the lowly banana! If he (or she?) is half the person you are, how much more honour, respect and fellow-feeling is due to those human beings you come across day by day!

Hoping you find this a fruitful message,

Tony Wilds

Marnhull Churches Sunday Services

Anglican Church of St. Gregory the Great, New Street

8.00 – Holy Communion

10.00 – Parish Eucharist

Weekday services as advertised

www.StGregorysMarnhull.org.uk

Catholic Church of Our Lady, Old Mill Lane

9.30 - Mass

6.00 - Mass

www.marnhullandgillinghamrc.org.uk

Marnhull Methodist Church, Burton Street

10.00 - Morning Service

St. Gregory's Church



Services & Events for February 2017

Wednesday 1st

09.00 - Children's Service led by
St Gregory's Primary School
(coffee served before and after service)
11.00 Holy Communion

Sunday 5th

Fourth before Lent

8.00 – Holy Communion [said]
10.00 – Parish Eucharist

Wednesday 8th

09.00 - Children's Service led by
St Gregory's Primary School
(coffee served before and after service)

Sunday 12th

2nd Third Sunday before Lent

08.00 – Holy Communion [said]
10.00 – Parish Eucharist

Sunday 19th

Second Sunday before Lent

08.00 – Holy Communion [said]
10.00 – Parish Eucharist

Wednesday 22nd

09.00 - Children's Service led by
St Gregory's Primary
(coffee served before and after service)

Sunday 26th

Sunday before Lent

08.00 – Holy Communion [said]
10.00 – Parish Eucharist

08.30 - Morning Prayer is held every Tuesday to Friday in the Hussey Chapel and 8.00 on Wednesdays

www.stgregorysmarnhull.org.uk

Baptism

We welcome Reuben Nathaniel Sides, daughter of Chris and Hannah of Leighton Buzzard who was baptised into the Church on December 4th.

Marriage

Congratulations to Kirsty Ann Louise Fisher and George Robin Calcott both of Wincanton, who were married here on December 10th 2016 and we wish them every happiness for the future.

Our Lady's Church



**Catholic Church of Our Lady, Marnhull
& St. Benedict's, Gillingham -**

www.marnhullandgillinghamrc.org.uk

Sunday Masses - 9.30am & 6pm (Marnhull) / 11am (Gillingham)

Feast Days and Days of Special Prayer in February

2 – The Presentation of The Lord (Feast)

Commemorates the presentation of Jesus in the Temple, forty days after his birth

8 – Day for Victims of Human Trafficking

For those who have, or are, suffering as a result of human trafficking; for those who offer support to victims; and for all agencies working to combat human trafficking.

11 – World Day for the Sick

For all who are sick and for those who care for them

12 – Racial Justice Day

For tolerance, respect and openness to neighbours and strangers

14 – Saints Cyril and Methodius (Feast)

Cyril (+869) and Methodius (+885) evangelised Moravia, Bohemia and Bulgaria and are venerated as the 'Apostles of the Slavs'. Pope St John Paul II proclaimed them Patrons of Europe

22 – Chair of Saint Peter the Apostle (Feast)

Celebration of the Cathedra Petri (Chair of Peter), recalls the ministry conferred by Christ on the Prince of the Apostles and continued in an unbroken line down to the present Pope

26 – Day for the Unemployed

For all seeking work; and for those who manage the economy, that they may always consider the poor and those who have least

Spiritual Development

A course (CDs) based on the highly acclaimed series of talks by Fr Dennis McBride, entitled 'Jesus in the Gospels' is currently running on Monday afternoons at 2.30pm, in the Chapelroom of Our Lady's Church.

Details are on the Parish Website (www.marnhullandgillinghamrc.org.uk). All are welcome.

Parish People

The funeral and burial of Mary Enid Higham took place on 16 Dec at Our Lady's.

Betty Kelly died on 1 Jan and Agnes McNamara died on 10 Jan. May they rest in peace

The Methodist Church



HIRE THE HALL!

The Methodist Church Hall is a good place to hire for family parties and social or other events for individuals, clubs, societies and classes. It is easy to find and parking is available. Rates are reasonable and bookings can be made by contacting Mrs Marlene Plowman on 01258 820869.

Churches Together

Committee

The next Churches Together Committee meeting will be held at Tapshays Barn on 19 January, at 2.30pm.

World Prayers

Churches Together in Marnhull continue to pray for world peace. The next gatherings will take place as follows:

10 Feb	- Our Lady's Church	- Rev Fr Martin Budge
10 Mar	- Methodist Church	- Rev Paul Arnold
12 May	- St Gregory's Church	- Rev Peter Colebrook

Christmas Lights

I would just like to say a big thank you to those who did the lovely Christmas decorations outside Robin Hill Store & Post Office and on the buildings and hedges opposite. The whole area looked really good when driving through during the evening, a real Christmas treat. So thank you again for lifting spirits, bringing cheer and making the village look great!

Gillian Walsham

WOMEN'S WORLD DAY OF PRAYER

10.30a.m. Fri. 3rd March at St Gregory's Church

The theme is 'Am I Being Fair to You?'

Prepared by the Christian women of the Philippines. Refreshments to follow.

EVERYONE (including men!) WELCOME

QUIET HALF HOUR PRAYER
10th February at Church of our Lady
12.00 - 12.30pm
ALL WELCOME

Atom Club - Non-Profit Science & Coding Club

We've just about recovered from the Christmas rush and most of the range is back in stock now. A huge thank you to Robin Hill Post Office for putting up with our daily post runs!

Thank you to all that shared and pledged on our recent Crowdfunding campaign. I'd pleased to say that with a great pledge from Dorset County Council we managed to get most of the funding we need to open our Science & Technology Centre. We're exploring 2 possible locations in Sturminster Newton, so watch this space. We've re-launched the campaign (see: www.atom.club/pledge) to raise the rest of the funds needed and remain confident that we can open just after Easter.

I was invited to talk about Atom Club on BBC Radio Solent in the New Year which was a new experience to say the least! It went well and we've been invited back in the near future.

Some of our funds have been invested in new artefacts to take round schools. We've expanded our collection of meteorites and now have a great range of fossils too. Our product range has been expanded to now include items such as shark teeth and dinosaur poo necklaces! Yes you read that right! A quirky gift that is proving very popular. We've started collecting various things for the new centre, including a beautiful brass mechanical solar system - it's incredible and very popular with the kids.



Astronaut Chris Hadfield Endorsing Atom Club

I was invited to meet Astronaut Chris Hadfield before he gave a talk in Bristol this week. If the name doesn't ring a bell - this was the guy who recorded a music video (a cover of David Bowie's Space Oddity) while on the International Space Station. He's commanded both the Space Shuttle and the Russian Soyuz.

Being a fan of his, I had a list of questions for him, but being the guy he is, he was more interested in finding out about the Atom Club! It was clear that he would give up his time freely to encourage the STEM education of the next generation.

His talk that evening was inspirational and filled with humour. He answered my question at the end of the show and gave his guitar plectrum to an excited 10-year old boy sitting in the front row - a future astronaut in the making perhaps! I heard when I got home that he stayed for over an hour after the show to sign autographs. An all-round top bloke. If you haven't read his book, I'd highly recommend it - unfortunately we're sold out!

Nextdoor Marnhull

A friend in a west Kent community has passed on an idea that might interest some of those living in Marnhull. It's a Neighbourhood website called Nextdoor which is used locally to exchange ideas, recommendations and share safety tips, events and get to know each other amongst other things.

On the face of it this could be a good idea but with the plethora of Social Media sites already in existence I have some doubts as to whether it's worthwhile.

However that is for others to judge. But they should beware because Nextdoor is a registered name operating out of Fetter Lane in the city of London and since the site would be free one can only imagine those behind the initiative are planning to use the email addresses on each site to target them with offers, advertising and the like.

This leaves everyone open to more scams than we already receive. Apparently there are already more than 2700 sites.

Jeremy Watson

Beware: Fake Amazon Emails

Action Fraud has received several reports from victims who have been sent convincing looking emails claiming to be from Amazon.

The spoofed emails from "service@amazon.co.uk" claim recipients have made an order online and mimic an automatic customer email notification.

The scam email claims recipients have ordered an expensive vintage chandelier. Other reported examples include: Bose stereos, iPhone's and luxury watches.

The emails cleverly state that if recipients haven't authorised the transaction they can click on the help centre link to receive a full refund.

The link leads to an authentic-looking website, which asks victims to confirm their name, address, and bank card information.

Amazon says that suspicious e-mails will often contain:

Links to websites that look like Amazon.co.uk, but aren't Amazon.co.uk.

Attachments or prompts to install software on your computer.

Typos or grammatical errors.

Forged (or spoofed) e-mail addresses to make it look like the e-mail is coming from Amazon.co.uk.

Amazon will never ask for personal information to be supplied by e-mail.

You can read more about identifying suspicious emails claiming to be from Amazon by visiting <https://www.amazon.co.uk/gp/help/customer/display.html?nodeId=201489210>

To report a fraud or cyber crime, call us on 0300 123 2040.

Domestic Cleaning & Garden Services

Whether you require one off or regular cleaning of your home or office, garden clearance, mowing lawns, weeding or soft landscaping

Call Maxine Chandler on 01258 820871 or 07918 727925

PARTNERSHIP FIRE AND SECURITY

Contact

Tel: 01747 858888

enquiries@partnershipsecurity.co.uk



SP203 - Part 1
Modular Scheme



TONY WILLIAMS ACCIDENT REPAIR



01963 365733

BRING IN THIS ADVERT
TO GET A 10%
DISCOUNT ON LABOUR



Microchipping Pets are lost without it!

From 6th April 2016 your dog must
be microchipped by law.

**only
£15**

Check your current chip for free with a nurse.
Please ring the surgery for an appointment.

Sturminster: **01258 472314**

Shaftesbury: **01747 850500**

Blandford: **01258 472160**

www.friarsmoorvets.co.uk

honest.



FREE WEBSITE AUDIT



**WEB
DESIGN**



**APP
DEVELOPMENT**



**CUSTOM
SOFTWARE**



**DIGITAL
MARKETING**

CALL NOW ! 01258 821654

Email: chris@thehonest.agency



**St. Mary's Catholic
Primary School**

**A warm, friendly
primary school
that welcomes
children from all
faiths and none**



**St. Mary's Explorers
Preschool**

**Early Education Funding
for 3 years +**

**Old Mill Lane, Marnhull,
DT10 1JX**

01258 820417

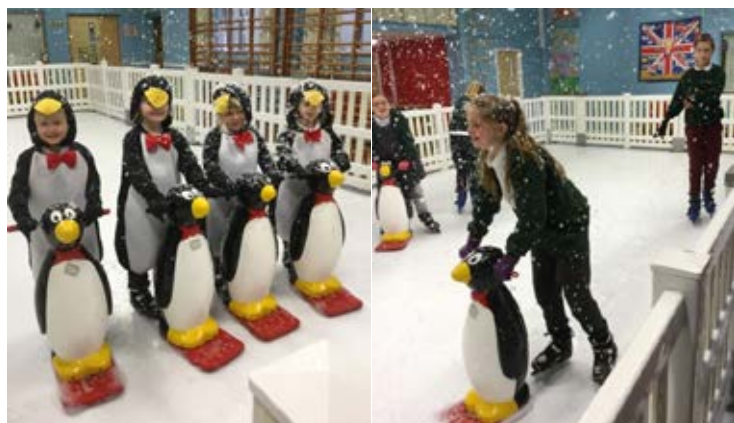


**Come and see what we can offer you and your child
www.stmarymarnhull.dorset.sch.uk**

St. Gregory's C.E.VA Primary School

It was with great excitement during their first week back at school after the Christmas break that the children of St Gregory's awaited the 'big reveal' of their new whole school theme. Mrs Field, headteacher, was leading this and on Friday the wait was over. Their school hall had been transformed into an ice-skating rink.

All the children and staff had an opportunity to have a go on the ice, with or without the help of a penguin! The children developed their skating skills during the sessions, some of the older children and Miss Edwards, Foxes class teacher, were even seen to be 'dancing on ice'. At times there were definitely demonstrations of 'Bambi legs' and wobbles but the whole experience was extremely popular with all the children, who have requested it every year!



Some of our youngest children dressed as penguins on the ice. They have been learning all about penguins and are busy planning a trip to see them at Longleat.

We are continuing to work with the Dorset Music service with their Musicianship programme which is designed so that young musicians can get an early understanding of the skills and ability needed to learn an instrument. Our Year 3 and 4 children in Squirrels class were delighted when they had their first lesson on both trumpet and trombone.

All of our children will be taking part in 'Forest School' sessions this term where they will be able to experience nature and learn outdoors. Children will learn from first hand experience and develop skills like, perseverance, independence and responsibility.

They will be taught den building, cooking and making drinks using a fire, making animal homes and using tools. Our ducks will shortly be joined by three 'Kune Kune' baby pigs. Their house is already in place and they should be with us in the next two weeks. Kunes are very gentle and are easy to handle. We will keep you posted with their progress.

Marnhull Baby & Toddlers

On 24th November we had a lovely morning with Gill coming in with her Usborne Books. We had a raffle prize of £17 which was fantastic.

Surestart visit us on 8th December to talk to all the parents and give us up to date information on everything that is happening near by. They also gave contact information for all help that is available and courses that anyone might be interested in. She bought a lovely activity for the children, it was to decorate Christmas baubles.

Our Christmas party on the 15th December was a great success, we had a visit from Santa and his elf who gave everyone a present, a big thank you goes to Alan and Nicola Denham for helping us out again, you did a great job. We played snowman skittles which the children really enjoyed knocking them all over. There was also party games and lots of yummy party food. It was a brilliant morning.

On the 2nd February we have happy Huggers joining us with her amazing cosy products.

St. Mary's Catholic School

Our Spring Term had a dramatic start when the whole school had a fantastic day of drama to launch their new topic 'London Calling'. The children took on different roles from 17th Century London and re-enacted the days leading up to the Great Fire. We had butchers, bakers, Candlestick makers and even ferry men to take the sick and injured across the river. They all found this fascinating and were so engrossed in their roles that continued to act out scenes through their playtime.

The children have also looked at modern day London and created a landscape of famous landmarks across the Hall. We now have a view of the Thames running from Big Ben to Tower Bridge. Our topic will continue with Key Stage Two spending a day in London visiting different landmarks across the city and taking a tour around the Tate Modern Gallery.

We are working hard to raise the profile of reading across the school and this term we have launched our new 'Reading Buddies' initiative. The children are paired with someone else within the school and everyone reads together, questioning each other on the texts that they share. Ofsted paid us a visit in the middle of January. They spent the day visiting classes and were pleased to see that the children were well behaved and worked well.



Our Explorers are also learning about London this term and have been reading 'The Naughty Bus', a story about a London bus that doesn't behave as it should! The children have been building Big Ben and The Tower of London out of construction materials.

With the cold weather, there have been plenty of opportunities to experiment with ice. The children impressed our Ofsted inspector with their problem solving skills in their efforts to release cars that had been frozen solid in a block of ice. They used tools and hot water sprays to rescue the vehicles.

St Mary's Explorers is open from 8:45am – 3:15pm every week day during term time and spaces are available for children aged 3 years +. The unit allows preschool and Reception children to work together on lots of key areas of learning, something that OfSTED agree allows younger children to make greater progress. If you would like to have a look around, or come and stay for a taster session, please call 01258 820417 to make an appointment. (Sessions: £4 per hour/£24 for full day, Early Education Funding vouchers accepted)



We will also be having valentine's craft on 9th February as it is half term the week of valentine's and we will not be there.

Emma and Dee

Jungle Hut Pre-School

What a year we had here at the Jungle hut starting with our OFSTED Inspection in April with comments such as:

Outcomes for children are good

All children make good progress. They are confident, independent and well-motivated to learn. They listen well at group times and follow instructions. They share well with one another and communicate their needs successfully. They show an interest in books and stories and practice their early writing skills, as they write for different purposes, for example, making appointments at the vets or writing a shopping list. These skills help to prepare children well for starting school.

We celebrated our success with a trip to Bristol zoo in May which was totally amazing we left Marnhull at 9.30am returning at 7.30pm we thought the children would fall asleep on the return journey but no such luck we all sang from the zoo back to Marnhull sore throats all round then!!we also experienced a massive storm somewhere near Cheddar caves the rain was coming in the windows to the amusement of the children.

The introduction of Forest school's lessons has given all children the opportunity to experience an inspirational process that offers children regular opportunities to achieve, and develop confidence and self-esteem through hands on learning experiences in a woodland and farming environment. This has included finding footprints which the children decided were bear footprints this inspired acting out "Were going on a bear hunt" Using a great deal of imagination the children collected sticks to make Jungle animals and just recently exploring the frost and ice and the effects on animals and plants not to mention observing the ice webs and counting how many webs are on the farm gate.

We took all the children who were leaving us to Monkey world this was again a wonderful day we were so lucky with both trips to have good weather resulting in great outdoor picnics.



Discovering the Bear footprints

Foot printing

We came back to start the school year with limited places which have now been filled so a very busy time, the creation of extra play space has enabled us to increase numbers of children attending Yes after six years I have surrendered my office to create this space. We are in the process of turning this space in to a sensory area we are currently waiting for the delivery of equipment and resources to help us complete this very exciting project.

Last September saw the introduction of opening all year-round Monday to Friday 50 weeks a year this is to help us prepare for the extended 30 hours free Early Education Grant (15 Hours plus) which the Government will implement from September 2017.

We are pleased to say our Holiday clubs have been well supported providing more flexible childcare provision for parents and carers.

We ended the year with a festive fun week which included our Christmas party with a chicken pox epidemic upon us we were pleased with 34 children coming along to enjoy Jamie Jigsaw entertain us with lots of tricks and Juggling ending his act with a daredevil stunt that left us all speechless!! Jamie is brilliant at encouraging the children to help him with his tricks and juggling, have booked him already for party 2017. We had a festive food lunch all prepared in our pre-school kitchen ending our party with a visit from Father Christmas who came with his own very

special elf helper. Thank you Father Christmas and Elf for taking the time to come and see us and bring some lovely presents.



Helping Jamie Jigsaw with some tricks

So here we are heading towards the spring with the daffodils, Crocus and many other spring bulbs now sprouting their green shoots in the garden, we have a very special visitor to the garden a very friendly tame Robin who will literally land by the children as they play the children feed him meal worms every day and have named him Robert. We also have a Squirrel who is not as friendly but enjoys showing us his tight rope skills on the cables behind Pre-school the children have called him Cyril. We always know when Spring is on its way here at the Jungle Hut as we will soon see the arrival of the swifts who fly all the way from Africa to spend the summer flying around and resting on our roof.

The theme for the holiday Club before the start of the term was The Jungle the children enjoyed making lots of Jungle Animals and made a fabulous safari truck which the children helped to paint and then took turns to drive we are planning to have farm themed holiday Clubs at a local working farm.

Themes up to half term are Winter making snowmen with many other winter activities as I write this article my taste buds are going in to overdrive as the children are preparing vegetable soup it smells so good I am wondering if I can join them for lunch today.

Leading up to half term the children are exploring transport this will include making the role play area in to a Garage and then a Hospital the children will learn about different occupations such as an Ambulance driver and what their role involves. The children will explore the environment around us looking for road signs and what they mean as well as spotting numbers and letters.

Looking forward to the rest of the year we have booked one outing this being a visit to Lulworth cove to visit the Dinosaurs and Museum as well as exploring the beach with the help of a Ranger from Lulworth cove - who knows we may even find some fossils. Lots to look forward to here at the Jungle hut.

We take children from 2 years – 5years accepting 2year old and 3/4year-old Nursery Grant. To find out more about what we get up to the Jungle Hut please visit our website at junglehutpreschool.com or have a look at our Facebook page. If you would like to know more about the Jungle hut and the flexible childcare, we offer please get in touch. Email junglehutpreschool@gmail.com

Sue



Marnhull Village Hall

Dates for your diaries

Do come and enjoy our forthcoming social events:

Weekend beginning 31 March

The Village Hall is delighted to welcome and support a small, new, enthusiastic pantomime type group. Announcement elsewhere.

Saturday April 8th

Bingo evening at the Hall 7.00 for 7.30 p.m - more details to follow

Thursday 27th April

War Time Fairgrounds: Behind the Scenes. 2.30 p.m.

A live illustrated and highly recommended presentation with stories and anecdotes from a different era Transport to and from the Hall can be arranged. Details to follow. Any surplus to the Building Fund.

Autumn or later

Gardeners' Question Time style event complete with meal.

A first for Marnhull, under discussion by a group of enthusiastic individuals. Watch this space! In aid of the Building Fund.

Marathon Man

Yes, we have our own Marathon Man aiming to run a marathon (26.5 miles) for the first (and last) time at the age of 68 to raise money for the Building Fund. The event is the North Dorset Villages Marathon and takes place from 8.30 a.m. on Sunday 30th April. The route edges Marnhull twice. More details in next MM and sponsorship forms available 1st March.

Robin Hill Stores Window Display

Some surprises here – come and look at our display from 29th January, with some surprising opportunities for use of the Village Hall. It is here for everyone!!

Building Development

A new planning application goes in in late January in response to the decisions made last year.

All users will be asked to a further meeting in February /March to consider a variety of proposals and opportunities.

Fundraising. The first major grant application was submitted at the start of January and another should be in by the time you read this. We are very grateful for a further private donation, and delighted that the Gardening Club has decided that its monthly raffle proceeds will be donated to the Hall for the next 12 months.

Contacts

For any further information please contact one of the following:

Stephen Bland, Chairman - 820171

Barbara Cornford, Bookings - 821427

Janette Kenworthy, Treasurer - 821311

John Dowsett, Secretary/Fundraising - 821534

Tina Matthews, Caretaker - 820054/07773 220284

Free Public Wi-Fi

A free wireless internet hotspot is available in the village hall. You can sign in via BT Wifi, or by using the access code that is on the wall.

MARNHULL VILLAGE HALL AND SUPPORTERS CLUB

APPLICATION FORM 2017

Name.....

Name must be the same as on your Bank Account, or a winning cheque may not be honoured.

Address.....

Post Code.....

I/We wish to become a member(s) and purchase..... tickets at £6 per annum each to be entered into the prize draws.

I/We enclose a cheque for £..... made payable to "Marnhull Village Hall"

Date.....

Signature.....

Send to : Mrs S Blackford, 6 Musbury Close , Marnhull DT10 1JR



AJS Plumbing & Heating

Plumbing & Heating Engineer

Tel: 01963 400503 or 07814 038852

Email: office@ajs-plumbingandheating.co.uk

Website: www.ajs-plumbingandheating.co.uk



Boiler Servicing & Maintenance
Air Source Heat Pumps/Ground Source Heat Pumps
Bathroom Installation Underfloor Heating
General Plumbing
Landlord Certificates & Power Flushing



TAXI – CAR



Courteous Lady Driver

Tel: 01258 820526

Mobile: 07929 983095

HOOK

ELECTRICAL CONTRACTORS

All electrical works inc: *Fault finding & repairs, Condition reports, New builds
Lighting design, Refurbishments, Ecclesiastical, Schools & Domestic.*

Contact Ed Cudlip on Tel/Fax: 01258 820161 Mobile: 07956 281644

EMAIL: hookelectrical@btinternet.com



ORCHARD CARS

Private hire and courier
service

Local and Long Distance

24 hour airport service

01258 472395

Operated by Andrew Budd



Ben Hannam Electrical Contractor

All aspects of electrical work undertaken

- New Installations & Rewires
- Alterations & Additions
- Consumer unit (fuseboard) upgrades
- Fault finding & Repairs
- Condition Reports

Musbury Close,
Marnhull

Tel : 01258 808329

Mob : 07914 760295

Email : benhannamelectrical@gmail.com



SAXON ROOFING SERVICES



6 New Street, Marnhull DT10 1PY

**Tiling, Slating, Leadwork, Timberwork
New & re-roofing work undertaken**

Nick Upshall
Tel: 01258 821231
Mobile: 07801 851079
www.camelotbuilders.co.uk

R.M. MOGRIDGE CONTRACTING LTD

For All Your Construction Needs

- Commercial ▪ Domestic ▪ Agricultural ▪ Equestrian
- Excavation ▪ Ground Clearance ▪ Spoils Disposal ▪ Foundations
- Drainage ▪ Septic Tanks ▪ Concreting ▪ Tarmacing ▪ Paving
- Oversites ▪ Driveways ▪ Kerbing ▪ Ponds ▪ Lakes ▪ Synthetic Lining

For Advice & Free Quotations

Tel. 01963 363208 or 07836 747895

E.mail: rmmogridgecontractingltd@btconnect.com

Marnhull Craft Club

Decorative Glass Making Demo

The Marnhull Craft Club programme for this year has now been arranged and we welcome anyone to come to our March meeting in the Methodist Church Hall on Thursday 2nd at 10a.m to a demonstration of decorative glass making. You are most welcome just for that morning or to join us regularly on the first Thursday month for craft or simply for a cup of coffee. Our February meeting is about 'Mary's Ideas Book', when we will be reviewing what crafts we have done over the years since we began to see if there are any ideas newer members would like to reprise. Why not come along and see if there's anything there for you?

Mothers' Union

In December we had our Christmas afternoon with various quizzes and a sketch followed by tasty, seasonal morsels with our cups of tea.

In January we welcomed our newest member, Marian, and she joined 13 others for a fun filled afternoon. Barrie Jenks, an accomplished magician, entertained us with a variety of tricks and jokes

resulting in both amazement and plenty of laughter.

The committee is currently working on the programme for the coming year ready for the AGM which is on February 8th at 2.30 in the Methodist Church Hall.

Music Club

Jean Shiner did not disappoint with her programme at the November Meeting. We went from Mozart (Exsultate Jubilate), via Bach, Haydn and Verdi to a lovely Schubert Impromptu. Then a concerto for two mandolins (actually played on guitars) by Vivaldi, and one of my favourites, an extract from Judex by Gounod. A quick touch of Spain in Concierto de Aranjuez, and The sad sea waves" by the New Scorpion band, which I hadn't heard before, and liked a lot. After the interval we lightened up with Die Fledermaus", Carmen, and Elgar interspersed with Chopin, Bach and Beethoven. A lovely programme much appreciated.

The next meeting, after our Christmas party, will be on 16 January and visitors are always welcome.

SB

Anyone interested in wine tasting?

I wonder if there would be any interest in setting up a wine tasting group in the village? Similar groups elsewhere seem to aim to have a meeting every other month or so. Someone, either from within the group or from outside, gives a short talk on something to do with wine (eg a region, country, or grape type). Half a dozen wines related to the subject of the talk are available for tasting, together with some nibbles, eg cheese and biscuits. Usually at least rudimentary tasting notes are provided, together with information on the retailers from whom the wines can be bought. Spitoons may be available, but don't have to be used!

The aim would be to learn a little more at each meeting about the differences between individual wines, and for members to extend their knowledge of the range of wines available nowadays, perhaps becoming just a little more discerning over time as to what is on offer and what they like best. The emphasis would be on identifying preferences, rather than on becoming in any way an expert. This group would definitely be designed for amateurs, and open to anyone with an interest!

To cover costs, members would need to stump up around £40-£50/year. I'd propose a working title for the group as the Wine Tasting Forum, or Marnhull WTF for short. Depending on numbers and people's preferences, we could either meet in the Village Hall or in members' houses.

Just a thought. If you're interested, please drop me an e-mail with your contact details and, if there's sufficient demand, I'll try to find a date in the next few weeks for an initial get-together.

Rob Wright - rob@wriighthand.co.uk

Marnhull Music Society

The Music Society's Christmas meeting began with a cheering glass of mulled wine brewed to our Chairman secret recipe. While we relaxed, Alan Loukes presented a programme of mainly seasonal music chosen by members of the committee. It started with some great favourites: Tchaikovsky's Pathétique, the intermezzo from Cavalleria Rusticana, and then moved on to more Christmassy pieces.

One surprise was a version of Andrew Lloyd Webbers Pie Jesu played by his brother Julian on the cello. A truly gorgeous sound, and an unfamiliar one, was Praetorius' Es ein Ros. This is definitely a recommended listen.

After some more familiar carols and yuletide pieces, including Sleigh Ride, evidently dreamed up by Leroy Anderson during a fierce heatwave in 1946 in the hope that it would cool him down, we had Bacchanale from Glazunov's "Seasons" which is a sprightly piece with a definitely pagan feel.

My favourite of the evening was Unto us a child is born from Handel's "Messiah". I remember trying to sing this in school music lessons, and a love of the whole work has stayed with me ever since. The gruff and tough Miss Maiden, the music teacher who hectored and shouted at us inept teenagers, should be beaming on her cloud. The interwoven voices and sheer joyfulness of the piece seem to symbolise the season.

The concert ended with the lovely Carol of the Bells which Alan told us came originally from the Ukraine, and a last rousing medley of the jolliest of the Christmas songs by the Halifax Choral Society.

After the music came the mince pies, coffee and a quiz compiled by Jean Shiner. She obviously pitched the questions very well. My team felt pretty clever at answering nearly all of them correctly only to find we hadn't been quite clever enough to win the prize.

Our concert on 20th February is "Ladies' Choice" presented by Judy Fyfe. Visitors are always welcome to join us for the evening to see how they like the society.

YV

Thank You

Thank you to everyone on the Crown Estate and to the staff and customers of The Crown Inn, who supported my daughter, Maisie, and her friends, who were carol singing on 20th December. Thanks to your generosity we sent a cheque for a fantastic £250 to Emerson Grant. Emerson is two years old and has been left paralysed from the waist down by an arachnoid cyst and his family, who we know from before we moved to Marnhull, are raising money to help buy a wheelchair and fund rehabilitation. Anna, Emerson's mum, sends her heartfelt thanks to our lovely community. Emerson unfortunately was in hospital over Christmas with a chest infection but Anna said that he liked the video of the girls singing and it made them feel festive. You can read more on Facebook at Emerson Grant's Story - The road to recovery.

Thank you all, Jane Whichello

Blackmore Vale Art Group



The Blackmore Vale Art Group is holding a coffee morning and art sale in the Village Hall on Saturday 18th March from 10.30 am until 12.30. Proceeds will go toward the refurbishment of the hall. Everyone welcome!

Thanks, Yvonne

K.M.SELBY

PAINTING & DECORATING

TELEPHONE 01258 473201 MOBILE 07792 029215

SAUL MITCHELL

PAINTER & DECORATOR

Maintaining the Past
Designing the Future

Est. 2004

Covering your local Area

All Aspects of
Interior & Exterior Decorating

01747 830029 or 07787 927455

JOSEPH PEACOCK

PAINTER & DECORATOR

07967 664446

INTERIOR * EXTERIOR * FREE
ESTIMATES

SHAFTESBURY

CHRIS WOODS

GENERAL GARDENER

Tel. 01258 820382
Mob. 07930 439931



Based in Marnhull

COMPTON SMITH

CLASSIC INTERIORS

Designer Paints • Wallpapers • Fabrics
Curtain Poles • Curtains • Upholstery
Lamps • Architectural Ironmongery
Interior Design Service • Handmade Furniture



10d Wincombe Business Park,
Shaftesbury, SP7 9QJ Tel: 01747 850150
www.comptonsmith.co.uk

BRAMALL GARDENS LTD

DESIGN—LANDSCAPING—MAINTENANCE

EXPERIENCED IN ALL ASPECTS OF GARDENING

FAST AND EFFICIENT

ALL RUBBISH REMOVED



☎ : 01258 820394 MOBILE : 07971 793 872

DARREN KENDALL

WOOD BURNING STOVE INSTALLATIONS

Fully qualified HETAS approved registered installer.

From opening up your fireplace, carrying out
chimney remedial works, fully installing and
self certifying new wood burning stoves.



HOME: 01258 820804 MOBILE: 07813 607 234

[Building works carried out by an NVQ/City & Guilds fully qualified builder](#)

CAUNDLEWOOD INTERIORS

Makers & Restorers of Fine
Handmade Furniture.

Cabinet making - Polishing -
Woodturning - Veneering-
Handmade Kitchens & Bespoke
Joinery.

Phone: 01963 362252

www.caundlewood.co.uk

#CrowdfundDorset

Crowdfunding makes youth projects happen

Dorset Council and Crowdfunder UK have teamed up to launch a £200,000 youth fund for new projects. It's the first time the council have used 'crowdfunding' as a way to help people and groups to make their ideas a reality by raising funds from 'the crowd'.

As Debbie Ward, chief executive of the county council, says: "Crowdfunding is a new and exciting way for us to help unlock the incredible ideas and potential within our communities and make a real difference for people in Dorset."

If you have a great idea for young people in your community, why not crowdfund to make it happen? It's really easy to do. Just follow the simple guide below and start raising money.

What is crowdfunding?

It's a way to raise money, awareness and support for a project from the people around you, or 'the crowd'.

How does it work?

You start with great idea and add it to a crowdfunding website. People can back your idea with 'pledges' of money and you can thank them with 'rewards'.

What kind of projects are we looking for?

We are looking for new and original ideas for things for young people to do and places for them to go in Dorset.

www.crowdfunder.co.uk

Note from the Editor: Marnhull's very own Atom Club has just raised £7,500 on Crowdfunder, so it really can work! We're relisted to get the rest of the funds needed to open the new centre in Sturminster Newton.

Sackmore Lane Development

I was reading the minutes from the November Parish Council meeting and saw that an update on the development site in Sackmore Lane would be welcomed by the Parish Council.

I felt this might be a good forum for us as developer to keep the village up to date on progress from time to time.

Siam Developments a family owned property business has purchased the site and we are currently working towards discharging the planning conditions. The recent work at the site was both archaeological survey and also investigative work to establish how to treat surface water drainage across the development.

Some Iron Age and Roman artifacts were found on the site, demonstrating some historical occupation and they were taken away for further study. The items were very small fragments and at this time, no further archaeological work is required. We will maintain a watching brief in this area of the site as required by the LPA when digging the footings.

Over the coming months, we will be working on the property designs with our architects. We are aiming to build a quality and characterful development that compliments the historic and very beautiful heart of the village and in time we will have a website with computer generated images.

We hope to be able to commence work on site in late Spring 2017 and aim to complete the development within a period of 12 months.

We are of course mindful of the disruption that such a development can cause and will work hard with our building contractors to minimise this.

I would of course appreciate if you could keep my contact details confidential to avoid lots of direct mail coming through and when we have some more news, I will update the messenger if you think that would be beneficial.

Simon Luke - Company Director

Children's Play Area Equipment

We only ever hear praise and enthusiasm for the Children's Play Area on the Village Recreation ground and the time has come where it needs updating and improvement to fulfil Health and Safety standards. The Parish Council is committed to this project in order to make this well-loved area of the village a more interesting place for the children and their parents to enjoy. This of course comes at a cost.

After consulting with several parents and children who regularly use the Play Area and the Baby and Toddler Group we have taken advice from a number of companies who supply and fit this type of equipment and the total cost would be around £22,000. This would include the new equipment, safety matting and secure fitting to Health and Safety standards. We have looked carefully at the best and most practical equipment that will give the essential health and safety requirements, longevity, minimal maintenance costs and of course help promote the children's health, development and learning skills as well as being a lot of fun. The costs are high and so we are looking for your help in supporting this well used village amenity.

The total we have so far to date is £12,000. We are applying for some funding in the way of grants but as yet nothing is forth coming. If you are aware of any one that may have contacts with companies that could offer grants etc. or may be interested in sponsoring a piece of equipment, please let us know. Every little helps.

The hope is that we can have the new equipment in place by April 2017 to make the most of the good weather. We want to make the Play Area more child friendly and a place where parents and children can enjoy their time together in a safe environment.

Cllr Sandy Kerr & Cllr Louella Hamer

Marnhull Pantomime

The Marnhull pantomime is going ahead, it is all new cast that have mostly not been on stage before. It is with much determination that it is going ahead.

It is not your traditional pantomime, it is a play about rehearsing a pantomime, but still has that pantomime feel that we all love.

We have had so much fun rehearsing it and we hope you enjoy it! Please come and join in the fun, the performances are:

**Saturday 1st April 1pm and 6pm
and Sunday 2nd April 1pm.**

You can buy your tickets from Robin Hill stores or Spar from Wednesday 1st February.

Ticket prices are:

Family ticket (2 adults and 2 children) £5

Adults tickets £2 each

Child tickets £1 each

Under 5's free

Look forward to seeing you there.

All the cast

Springhead Trust

Wednesday 15 February

Garden and Flower Photography Course with award winning photographer Edward Parker, 10-1, £25. For all abilities Please book on info@springheadtrust.org.uk info@springheadtrust.org.uk

Wednesday 15 February

Open garden with stalls, 10-5, admission £3.50, Friends of Springhead & U16 free, dogs on leads welcome, light lunches & refreshments

T: 01747 811853 or visit: www.springheadtrust.org.uk

Boilerwise Ltd

Specialist Boiler Engineers

Repair, Service, Maintenance and Replacement of OIL and GAS Boilers. Heating System Fault Diagnosis and Repair. Landlord Certificates, Systems Surveying and Power Flushing.

01258 474605

24hr Gas Safe and Oftec Registered Engineers



572546



C6413

©LW

premier electrics

Appliance Repairs

- Same Day Repairs
- Local Engineers
- OAP Discounts
- 12 Months Warranty
- Established 1971
- Holiday Rental Repair Specialists



retra
Radio, Electrical and Television

Call us on: **01305 360300**
01747 470212
01258 398212

Same Day Repairs
and
12 Months
Warranty



We Clean Ovens

...so you don't have to!

Call us today to have your cooking appliances sparkling, using our own eco friendly products.

Our oven cleaning experts will leave you free to enjoy your valuable leisure time.

- Range & Aga Specialists
- Ovens & Hobs
- Extractor Hoods
- Microwave Ovens
- Traditional Stoves

oveni
oven valeting service
Local | National | Affordable

Call TODAY for LOCAL Service



01747 835 830
ovenuyeovil.net



REGENCY



RENOVATIONS

- New Builds - Extensions - Renovations -
- Loft Conversions - Conservation & Listed Works -
- Carpentry & Joinery - Kitchens & Bathrooms -



01963 363002

office@regencyrenovations.co.uk

www.regencyrenovations.co.uk



Trading Standards



The truth about dates: Use by date and best before, safety and quality

In general food law requires pre packed food to have a date mark. Depending on the food type this is either a 'use by' date or a 'best before' date.

The use by date is about safety and the most important date to remember! Foods can be eaten (and most can be frozen) up until the use by date, but not after, unless it was frozen before the use by date. You will see use by dates on food that goes off quickly, such as meat products or ready-prepared salads. For the use by to be a valid guide, you must carefully follow storage instructions.

The best before date is about quality and not safety. The food will be safe to eat after this date but may not be at its best. Its flavour and texture might not be as good. The best before dates appear on a wide range of frozen, dried, tinned and other foods. The best before date will only be accurate if the food is stored according to the instructions on the label.

After the use by date, don't eat it, cook it or freeze it. The food could be unsafe to eat or drink, even if it is stored correctly and looks and smells fine.

For quick tips to save money, make time and reduce waste by eating, cooking or freezing food by its use by date visit <https://www.food.gov.uk/science/microbiology/use-by-and-best-before-dates>

Shops can sell food once the 'best before' date has passed, however selling food past its 'use by' date is a criminal offence and can lead to prosecution. A supermarket in the Midlands was recently prosecuted and fined £75,000 for selling which was past its 'use by' date.

Is your mattress safe?

Trading Standards have been cracking down on rogue traders selling illegal mattresses after an increase in complaints from consumers about cheap mattresses sold online or from the back of a van.

The law requires that mattresses meet a level of fire resistance as laid down in the British Standard, however it does not require that mattresses have a label to that effect.

Rogue sellers may entice customers into thinking they are getting a bargain, for example by saying that they are selling clearance stock, or excess stock from a large hotel order.

The mattresses typically fail all fire safety tests as well as being filthy and unhygienic. The items are often old and discarded mattresses that have been recovered and repackaged to look new. Some of the more brazen traders are even using the logos of well-known manufacturers and retailers on their vans to further fool consumers into believing they are 'bagging a bargain'. Paper work given with the mattresses may contain limited or false information.

Dorset Trading Standards Service has on two separate occasions prosecuted traders for selling mattresses which when tested failed the fire safety tests.

Devon and Somerset Trading Standards have issued warnings to residents as complaints about mattresses increased tenfold in the period from 2014 to 2016.

Dorset Trading Standards Service advise that you do not purchase goods or services from people who approach you in the street or from callers who cold call on your doorstep.

If you want to report concerns over mattresses, or if you would like advice about your consumer rights, then please contact the Citizens Advice consumer helpline on 03454 040506.

Breathe-On UK

Breathe on UK is the national independent non-disease specific advocate for all children requiring technology to breathe across the country. We're based right here in Marnhull.

The charity supports the families and carers of young people who are life-dependent on mechanical breathing, or long term ventilation (LTV). Such a situation is recognised as being extremely traumatic and emotionally, physically, and financially demanding.

Recent research and medical estimates indicate that there are thousands of children in the UK who exist with this condition and that the number is growing every year.

There has never been a more critical opportunity for working together to enable as many children as clinically stable to return home to their community setting, freeing up critical care neo-natal and paediatric intensive care beds available at a point of need. Currently one ward in London in a major teaching hospital has 14 beds which are blocked by children who have been clinically stable for over 6 months.

Breathe-On UK has only survived due to your generosity. The role until this concept was realised has been on the same strategy as The Samaritans operating from a fully serviced base in a Medical centre.

Over the last 6 years the role has morphed into The National Independent Advocate this is due to the alarming increase in babies surviving with the aid of medical technology. We cannot turn the clock back but will advocate for appropriate care on a case by case basis.

Breathe-On UK is now fundraising to raise £70K on the Virgin Moneygiving website.

More information: www.breatheon.org.uk



Chris Hannam

01935 50 82 81 - 07950 33 75 76

**Elm Yard, Three Elms Inn, North Wootton
Sherborne DT9 5JW**

- Traditional and Contemporary Forge Work
- Design Service
- Gates and Railings
- Garden Architecture
- Balconies and Handrails
- Restoration
- Cast Iron Repair
- On-site Welding and Fabrication Service
- Shot Blasting and Painting Service
- Brick, Stone and Flintwork

chris@dorsetforgeandfabrication.co.uk
www.dorsetforgeandfabrication.co.uk



a fresh approach

Services for Individuals

- Residential Property
- Wills, Probate & Tax
- Personal Injury
- Employment Law
- Equity Release Mortgages
- Powers of Attorney
- Motoring Offences
- Dispute Resolution

Services for Business

- Commercial Property
- Company Law
- Agricultural Matters
- Employment Issues
- Debt Recovery
- Licensing
- Commercial Disputes
- Business Advisory Service

Shaftesbury: 01747 440448
 Sherborne: 01935 817736
 Gillingham: 01747 822103
 Blandford: 01258 440530

www.maclachlansolicitors.co.uk



MacLachlan
SOLICITORS



ROYAL BRITISH LEGION MARNHULL BRANCH AND CLUB

LEGION HALL, SODOM LANE, MARNHULL
 TELEPHONE: 01258 820613

Clubhouse open hours

Mon-Thur 8-11.30pm, Fri 8-12pm, Sat-12-3pm, 8-12pm

SKITTLES (LEAGUE and FRIENDLY) - DARTS - POOL

LIVE ENTERTAINMENT

(see Blackmore Vale Magazine or ring for details)

BRANCH AND CLUB MEMBERSHIP NOW AVAILABLE

FAMILIES MOST WELCOME

Come along and see what we can offer you

Branch: branch@marnhullrbl.wanadoo.co.uk

Club: club@marnhullrbl.wanadoo.co.uk

Alternate Mondays
PRIZE BINGO
 7.10pm
 Open to everyone



CHAFFERS
ESTATE AGENTS

Incorporating

ROY BARRETT
ESTATE AGENTS

Experts in local knowledge

SALES, LETTINGS, COMMERCIAL, SURVEYS

More Properties Urgently Required!

Gillingham * Shaftesbury * Sturminster Newton * Wincanton

Tel: 01258 473900

Williams Florist
floristry & gardening

Do you have something
 special to say from Thank you,
 Happy Birthday to I love you?

Full florist service available

Local deliveries and

Eflorist relay members

Say it with flowers

Station Road, Stalbridge,

Dorset. DT10 2RQ

Tel: 01963 362355

Email: williamsflorists@live.co.uk

www.williams-florist.co.uk



Mon to Fri 9 - 5 and Sat 9 - 1
 Large Free Car Park Opposite

Marnhull & Gillingham Badminton Club



Badminton for beginners

Monday club social night: 8–10pm (except bank holidays)

£25 Joining Fee

Adults £4.50

Family £7.00 (up to 2 adults & 2 children)

Juniors £3.00

ALL COACHING FREE (Badminton England Coach)

Loads of fun for children and families

Badminton Club Night

Tuesday club night: 7.00–10.00pm

First night free to new members

ALL COACHING FREE (Badminton England Coach)

Intermediate level players always welcome

Badminton senior night

Thursday senior league night: 8.15–10.15pm

The club is interested in players who wish to play at a league level.

The club participates in the Salisbury district league – div2 mens and div2 mixed and div3 mixed

Dorset Wildlife Trust

February and March Events

New technology has opened up the world of photography to many more people, but sometimes with varying success. Whilst most of us are happy to simply 'point and shoot' to capture a special moment, others strive to create an image of the living world around us, and that takes a great deal of patience and preparation.

Stewart Canham leads DWT's Photographic and Video group and is an experienced wildlife photographer. On Wednesday, 15th February 2017, he will give an illustrated talk on Wildlife Photography at Fontmell Magna Village Hall (SP7 0JU), starting at 7.30pm. This will be the perfect opportunity to discover the art of wildlife photography and learn from a highly skilled practitioner. We ask for a small donation of £2 (including tea/coffee & biscuits) to help cover expenses, but there is no charge for children under 16.

Date for your diary: Wednesday, 15th March 2017 – An illustrated talk on 'Gardening for Wildlife' by DWT Community Conservation Officer, Briony Baxter, in Fontmell Magna Village Hall (SP7 0JU) at 7.30pm. £2 (including refreshments); no charge for children under 16.

University of the Third Age

John Smith gave us a vivid account of the Channel dash that took place from the 11th February 1942 it was an audacious exploit to sail three of the German fleet flag ships from Brest in Brittany back to their home bases in Germany. The Scharnhorst, the Gneisenau and the Prinz Eugen had been blockaded in Brest and Coastal Command did manage to inflict periodic damage using torpedo bombers. These were extremely dangerous missions for the British air crew, but they did succeed in reducing the seaworthiness of the vessels The Germans intended to sail the three German war ships up the English Channel, past the Royal Navy, the British Army, Royal Airforce and their commands, Bomber Command, Coastal Command and Fighter Command. Both sides had plans. Agents in Brest were unable to communicate due to radio jamming by the German and the ships left Brest and escaped detection for over 12 hours getting as far as the approaches to the Straights of Dover without being discovered. (Although spotter planes and the Sea Lion submarine were looking for the flotilla, faulty radar and cloud cover allowed the flotilla to pass undetected).

The Luftwaffe provided very effective air cover and were aided by foggy conditions which confused both sides. (At one point the Luftwaffe were providing air cover for a misidentified British battle ship). The artillery battery at Dover had guns of sufficient range to take on the flotilla on the French side of the channel. With the new RADAR ranging available they could start engaging the ships, unfortunately, the gunners also needed visual confirmation for accuracy and with the fog missed the targets by about a mile. The ships reached their home ports 2 days later and Churchill was far from impressed and ordered an immediate inquiry into the fiasco. However, although it looked like a German victory, the ships were now basically trapped in their German bases where they were bombed on several occasions and were no longer a threat to the Atlantic convoys. For Germany, it was a tactical victory, but a strategic defeat.

Our next meeting at 10am on the 2nd February, at the Father's House, Shaftesbury, will feature Colin Marsh telling us about a Cycle Ride to Romania.

Details of all SGU3A groups and activities can be found at sgu3a.org.uk

Advertise Your Business

Would you like to advertise your business in the Marnhull Messenger?

We have a couple of advertising spaces available for this year's Marnhull Messenger and Directory. These are available on a first come first serve basis and at very reasonable rates.

Contact Rosie Gall, Advertising Manager

01258 820484 - advertising@marnhullmessenger.org.uk

REMOUS

Making you look good on paper...

DESIGN PRINT FINISHING LOGISTICS MAILING

01963 250 920

Crossword and Sudoku Answers

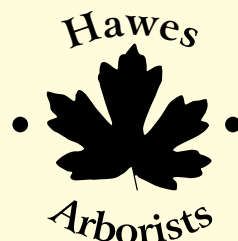
8	3	9	1	6	5	7	2	4
6	1	7	2	4	9	3	8	5
5	2	4	7	3	8	1	6	9
7	9	3	8	1	2	5	4	6
4	6	2	5	7	3	8	9	1
1	8	5	4	9	6	2	3	7
2	5	6	9	8	1	4	7	3
3	4	8	6	5	7	9	1	2
9	7	1	3	2	4	6	5	8

Hard

8	4	1	5	3	9	7	2	6
7	5	2	6	8	1	9	4	3
6	3	9	2	4	7	5	8	1
9	7	3	4	6	2	8	1	5
2	6	8	1	9	5	3	7	4
5	1	4	3	7	8	6	9	2
3	8	5	9	1	4	2	6	7
1	9	6	7	2	3	4	5	8
4	2	7	8	5	6	1	3	9

Medium

ACROSS
 1. Avocet 4. Acute 6. Sam 7. Spitfire 8. Oboe 11. Reich 13. Lyre 15. Fuchsia 16. Echidna 17. Skyr
 19. Issue 21. Echo 24. Ungulate 25. Ken 26. Grant 27. Yorke
DOWN
 1. Amigo 2. Copernicus 3. Tutsi 4. Amish 5. Uneasy 6. Solo 9. Baulk 10. Ether 12. Chichester
 13. Loire 14. Ranch 18. Yakuzza 19. Ingot 20. Sulky 22. Cooke 23. Omen



- All aspects of tree surgery
- Dismantling and felling
- Pruning
- Tree planting schemes - design to implementation
- Tree management and aftercare
- Hedgerow planting, aftercare and trimming
- Tree disorders and solutions
- Tree pest and disease analysis

Telephone 01747 850 253

NPTC Certified • Tech.Arbor.A Qualified
All work carried out to BS3998 standards

*Escape to the country and
feel at home in our cosy
comfortable holiday cottage
with enclosed garden safe for
children and dogs*

Holiday Cottage to let

**Situated on a smallholding with direct
access to footpaths and surrounding
beautiful Dorset countryside.**

Hampers of home grown vegetables available.

Accommodates 6 people including children

Dog friendly. Fully furnished to a high standard
with all appliances.

**Overnight stays, weekends
and longer term lets welcome**

01258 821037

Marnhull, Dorset



Nazareth Lodge

Residential Care Home Sturminster Newton

Rated "Outstanding" by the Care Quality Commission

AWARD WINNING HOME

2016 Great South West Care Awards

Regional Winners for:

Outstanding Contribution to Social Care – Camilla Trimble

Care Team & Palliative Care Team

2016 National Care Awards: Care Manager Finalist

"Silver" Food for Life Catering Mark

Awarded the highest accolade of "Beacon" status for "End of Life Care"

Full respite and day care services are available.

For further information or brochure please ring 01258 472511 or

email: care@nazareth-lodge.co.uk

www.nazareth-lodge.co.uk



Mindful

Supporting local people with memory problems

You can find us at the Mindful Café at The Hub, off Station Road, Stalbridge.

The café runs on the first Monday of each month, between 10.00 am and 12 noon.

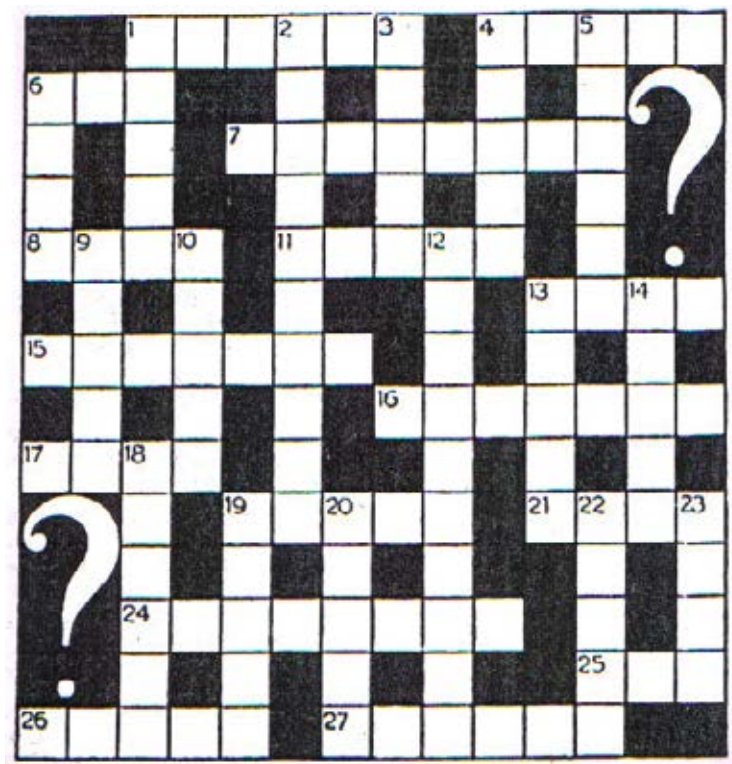


All welcome

If you would like to help and support Mindful, or for more information, contact:

Chair & Membership Secretary, Sally Nutbeem 01747 852153

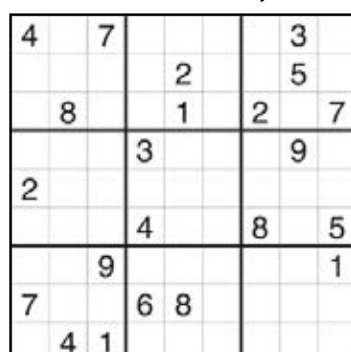
(email snutbeem@gmail.com)



Hard Difficulty



Medium Difficulty



Sturminster Newton Floral Group

Sturminster Newton Floral Group Will be holding their next meeting on Wednesday 15th February in the Stour Hall at the Exchange. It will take place as usual a 7.30 pm and is a demonstration by Michelle Davies entitled "Mad Hatters" Visitors are very welcome and the cost is £5. These evenings are great fun and there is a raffle for the six beautiful arrangements.

Child Okeford Flower Arranging Club

Our next meeting will be at 2.15pm on Tuesday 21st February in Child Okeford Village Hall when we will share our ideas for a practical design based on the theme 'Buds, Bark and Lichen'. Everyone is most welcome. Visitors £6 to include refreshments. For further details please contact Sue Brown 01258 863775.

ACROSS

- 1) Long legged wading bird with slender upturned bill. (6)
- 4) Angle of less than ninety degrees. (5)
- 6) and 22D) Singer who had a UK hit in 1960 with 'Chain Gang'. (3- 5)
- 7) Famous British WW11 plane. (8)
- 8) Woodwind instrument. (4)
- 11) German word meaning empire. (5)
- 13) Stringed instrument like a small harp. (4)
- 15) Ornamental shrub native to America having drooping flowers of two contrasting colours. (7)
- 16) Spiny insectivorous egg laying mammal. (7)
- 17) Icelandic dish of curdled milk. (4)
- 19) In law a person's children. (5)
- 21) In Greek mythology a nymph who faded away until just her voice was left. (4)
- 24) In zoology a hoofed mammal (8)
- 25) A person's range of knowledge.
- 26) 18th President of the united States who was previously commander in chief of the army. (5)
- 27) Nickname of a breed of dog developed in the north of England. (6)

DOWN

- 1) A friend in Spanish. (5)
- 2) 15th and 16th century mathematician who placed the sun at the centre of the universe. (10)
- 3) Member of the minority tribe in Rwanda. (5)
- 4) Traditional Christian group in Pennsylvania. (5)
- 5) In Shakespeare's Henry 1V the head that wears the crown lies like this.
- 6) Card game like whist. (4)
- 9) Area on a billiards table between the bottom cushion and a line drawn 26 inches away from it. (5)
- 10) Volatile liquid which was used as an early form of anaesthetic. (5)
- 12) County town of West Sussex. (10)
- 13) Longest river in France. (5)
- 14) Large farm in the USA or Canada. (5)
- 18) Criminal organization in Japan. (6)
- 19) Rectangular block of metal often gold. (5)
- 20) Light two wheeled horse drawn vehicle for one person used in trotting races. (5)
- 22) See 6A)
- 23) The ****, 1976 award winning supernatural horror film. (4)

All puzzle answers on page 28

Sutcliffe & Co Chartered Accountants

We are a long established local practice at Old Bank House, Sturminster Newton, acting for a wide variety of local businesses and individuals.

We offer a full range of business advice, taxation and accounting services including

Self Employed Accounts Company Accounts

Self Assessment Tax Returns

Tax planning

Cash Flow and Business Plans

Management Advice

Corporate Planning VAT advice and returns

PAYE, CIS and Payroll

We provide a personal and professional service and look forward to assisting you in achieving your business objectives and meeting your statutory obligations

For an initial no obligation meeting
telephone Mitchell Langhelt, Ann Coward or
Nicky Huzal on

01258 472344

The **co-operative** funeralcare

- 24 hour service
- Free bereavement advice
- Pre-paid funeral plans

GILLINGHAM

2 High Street, SP8 4QT

01747 824738

SHAFTESBURY

Greenacre House, Salisbury Road, SP7 8BS

01747 858968

www.funeralcare.co.uk



Part of The Southern Co-operative

Time for a change?



◆ Proactive Estate Agency ◆

We offer a personal, thoroughly professional & proactive estate agency service that goes the extra mile to help clients.



So whether you are
selling or buying call ...

01258 830 860

Abbot & Slater

Market Cross, Sturminster Newton

www.abbotandslater.co.uk



STURMINSTER NEWTON • BLANDFORD • LONDON



*letting*matters

Come to one of our coffee mornings
and **learn** all about **lettings**

Poundbury 4 March

Axminster 18 May

Bridport 29 March

Sturminster 7 July

Sherborne 27 April

Yeovil 8 September

Blandford 19 October

symondsandsampson.co.uk

Symonds
& Sampson

ESTABLISHED 1858