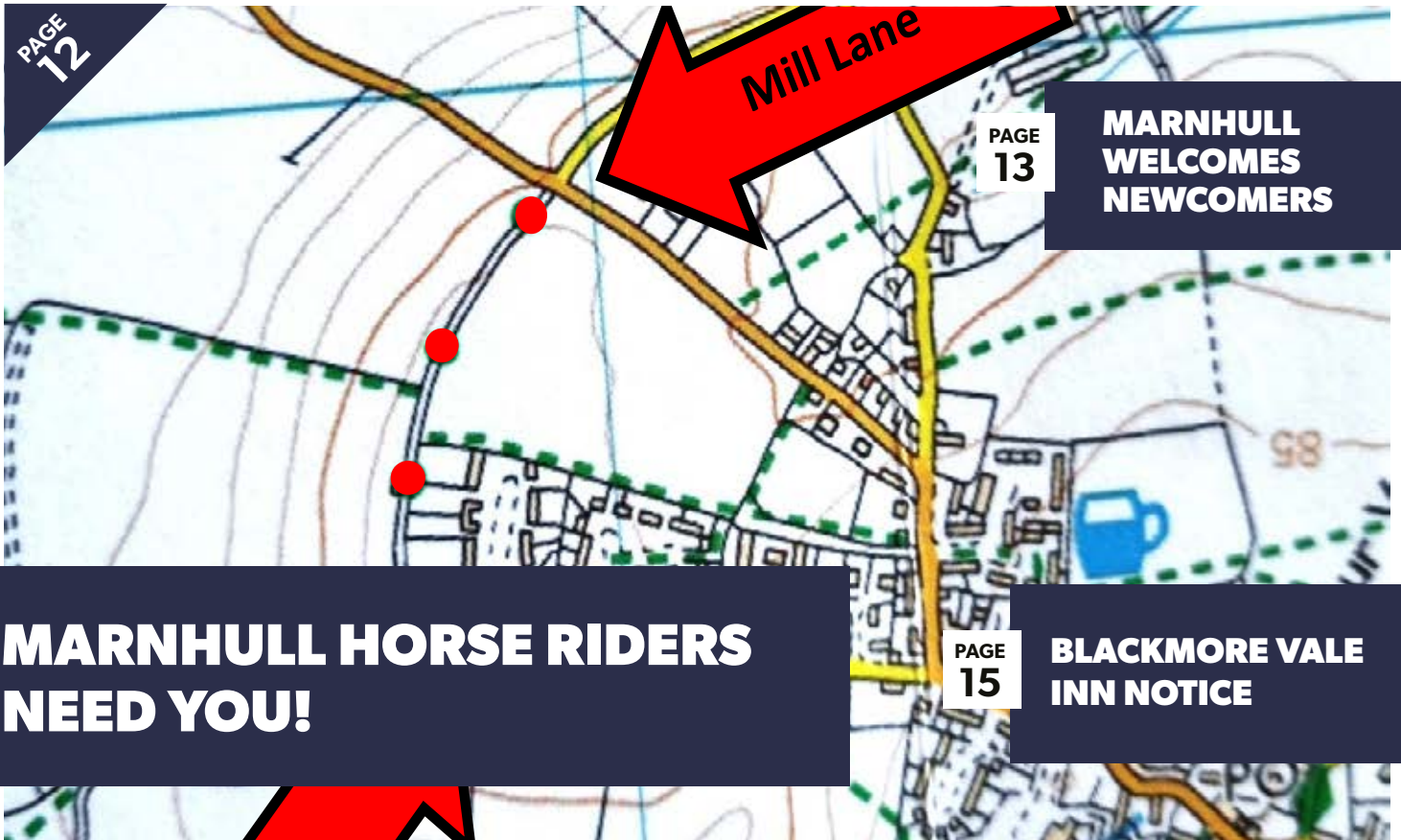




THE MARNHULL MESSENGER



Original illustration by George Cox



PAGE 12

Mill Lane

PAGE 13

MARNHULL WELCOMES NEWCOMERS

MARNHULL HORSE RIDERS NEED YOU!

PAGE 15

BLACKMORE VALE INN NOTICE



PAGE 5

THE SURGERIES

What's new from our local doctors surgeries



PAGE 18

IN OUR CHURCHES

All the latest news from the churches



PAGE 20

OUR SCHOOLS

See what the schools are up to

SUPER HERO TECH SOLUTIONS



WEBSITES

**NEW
TECH REPAIRS**

APPS

SEO

3D PRINTING

MARKETING



Dorset Tech
Part of **Honest** Tech Group

GILLINGHAM HIGH STREET
WWW.DORSET.TECH



WELCOME TO YOUR MARNHULL MESSENGER

CHRIS RYU
Messenger Editor

November 2022 - Issue 129

This week marks our 8th Anniversary of living in the village. That feels weird really, as it feels like 2 whole years have been lost to Covid and the blur that was caused by our lives adapting to a changed world.

This morning I revisited what I wrote in the Messenger 7 years ago to reminisce I guess. I seemed so happy and enthused to be part of village life - it was refreshing to read! Naturally, I still love living here, however, I can't help but feel a lot more distant from the community than before.

This is of course my own fault as I don't get out so much now. An incident in the village a few years back started it as it made me take a step back from involvement in the village, but I'd planned on getting involved again at some point. A health-related incident, then Covid and our business growing rapidly stopped me doing that. 8 years ago I would go to a committee meeting, event or at least the village shops a few times a week. These days the only time I speak to a villager is when I've missed their article and they're angry about it! Any free time I get tends to be spent with Emma and the kids. I'm conscious that at 16, my oldest (Mikey) might not be at home for too much longer, so the father & son time has grown in importance. The house is neglected too, but once that's back to how it should be I'll be back out in the community I promise.

Last issue I reported that we may have a new editor... unfortunately the individual has pulled out and so you're stuck with me for a while yet.

NEW EDITOR STILL REQUIRED

This paragraph almost seems silly now, but we're still looking for a new Editor. No specific experience needed, just a good level of computer literacy.

SUBMIT YOUR EVENTS INTO A LIVE CALENDAR

On the messenger website and they'll be added to the printed automatically:
www.marnhullmessenger.org.uk

VILLAGE HELP

NORCAT - Bookings 10am - 3pm - 01258 472164
Dial-a-Ride - Major & Immediate Emergencies Only - 07900 261182
Marnhull Village Care Car Service:
Ann Davis-Penson - tel: 07434 638485 or 01258 820456.
This is offered for door to door transport for the elderly, disabled and unemployed for essential trips with a set scale of modest donations.

Disclaimer

The opinions expressed in the articles and on the pages of the Marnhull Messenger are not necessarily those of the Marnhull Messenger. All the dates and details are as supplied by the contributing organisations. The Marnhull Messenger is not responsible for errors or omissions, accuracy of the content, nor the failure of any published event to go ahead. The letters and articles published in this magazine are accepted in good faith and the views expressed therein are not necessarily the views of the Messenger Steering Committee, whose decisions on publication are delegated to the Editor and are final.

This publication is provided for your use "as is" without warranty of any kind, either expressed or implied; inclusion of an advertisement for an event or service does not imply that they are endorsed by the Marnhull Messenger. The Marnhull Messenger will take all reasonable precautions to ensure that the content is socially and morally acceptable.

Privacy Policy

The Marnhull Messenger respects the privacy of organisations and persons who submit information for publication. Personal details, including photographs, will only be published if approved and submitted by organisations or individuals. No personal details will be given out or sold to any third parties, whether individuals, organisations or companies.

DEADLINE FOR NEXT ISSUE

MID-DAY 14th November

E-mail all texts, announcements and other requests to:
editor@marnhullmessenger.org.uk

MARNHULL MESSENGER CONTACT DETAILS

EDITOR:

Chris Ryu - editor@marnhullmessenger.org.uk
01258 808577 (option 4)

WEBMASTER:

Chris Ryu - as above

ADVERTISING:

Rosie Gall - rosiegall1@gmail.com

TREASURER:

Bill Shannon - treasurer@marnhullmessenger.org.uk
01258 820890

CIRCULATION:

Catherine & Mark Turner - circulation@marnhullmessenger.org.uk

CHAIRMAN:

Ian Gall - chairman@marnhullmessenger.org.uk
01258 820484

ADMINISTRATOR:

Fiona Nelson - administrator@marnhullmessenger.org.uk
01258 821036

These contact details are to be used in relation to the publication of the Marnhull Messenger ONLY

MARNHULL MESSENGER WEBSITE

WHO DO I CONTACT?

Any amendments or proposals for new pages in the messenger web site should be made to:

Chris Ryu Email: editor@marnhullmessenger.org.uk

MARNHULL MESSENGER DELIVERIES

It takes about 40 people, all of whom are volunteers, to collate and deliver The Marnhull Messenger to every home and business in the village. We are extremely grateful to this dedicated team, without whom the magazine simply would not flourish.

Whilst we always aim to deliver the magazine by the 1st of the month, from time to time illness, family commitments and a myriad of other personal issues can sometimes get in the way, resulting in the occasional late delivery. Recently, there have been a few complaints from villagers, because they felt their copy of The Marnhull Messenger was delivered late.

It might be worth pointing out that if it is essential to you to receive the Marnhull Messenger by a particular date and it hasn't arrived, then the Church, the two pubs and all the businesses in the village have spare copies available.

Ian Gall – Chairman, The Marnhull Messenger Steering Group.

ANNUAL DIARY 2022

All events are held at the Village Hall unless otherwise stated.

NOVEMBER

1st - Qigong & Tai Chi @13:00 Methodist Hall

1st - Bridge Club @14:00 Methodist Hall

2nd - Fitsteps @11:15am

2nd - Marnhull Community Choir rehearsal @19:00

3rd - Craft Club @10am Methodist Hall

4th - Going Solar - Meet the installers! @19:00

5th - Electric Vehicle Show @10am

5th - The Marnhull Hub and Repair Café @10am

6th - The Marnhull Hub and Repair Café @10am

7th - Qigong & Tai Chi @13:00 Methodist Hall

8th - Bridge Club @14:00 Methodist Hall

8th - Building a Christmas Display The Gold Club @19:30

9th - Fitsteps @11:15am

9th - Tea with Friends meeting @14:30 Methodist Hall

9th - Marnhull Community Choir rehearsal @19:00

10th - Marnhull Amblers - Short Walk - approx 3 miles @10am

12th - The Marnhull Hub and Repair Café @10am

12th - Fish 'n' Chip Poppy Quiz @19:00 British Legion

13th - The Marnhull Hub and Repair Café @10am

14th - Qigong & Tai Chi @13:00 Methodist Hall

14th - Bingo @19:00 British Legion

14th - Women's Institute - Race to Scotland in a Tub-sized Dinghy, Ken Fowler @19:30

15th - Bridge Club @14:00 Methodist Hall

16th - Fitsteps @11:15am

16th - Marnhull Community Choir rehearsal @19:00

18th - Marnhull Community Café @10am

18th - The Annual General Meeting @19:30

19th - The Marnhull Hub and Repair Café @10am

21st - Qigong & Tai Chi @13:00 Methodist Hall

22nd - Bridge Club @14:00 Methodist Hall

22nd - Moviola @19:00

23rd - Fitsteps @11:15am

23rd - Marnhull Community Choir rehearsals @19:00

24th - Marnhull Ramblers - Long Walk - 4-7 miles @10am

26th - The Marnhull Hub and Repair Café @10am

28th - Qigong & Tai Chi @13:00 Methodist Hall

28th - Bingo @19:00 British Legion

29th - Bridge Club @14:00 Methodist Hall

30th - Fitsteps @11:15am

30th - Marnhull Community Choir rehearsals @19:00

DECEMBER

1st - Craft Club @10am Methodist Hall

2nd - A Technicolour Christmas Concert @19:00

3rd - The Marnhull Hub and Repair Café @10am

4th - The Ridgeway Singers - Traditional Dorset Christmas @15:30 St Greg's Church

5th - Qigong & Tai Chi @13:00 Methodist Hall

6th - Bridge Club @14:00 Methodist Hall

7th - Fitsteps @11:15am

8th - Marnhull Amblers - Short Walk - approx 3 miles @10am

10th - The Marnhull Hub and Repair Café @10am

12th - Qigong & Tai Chi @13:00 Methodist Hall

12th - Bingo @19:00 British Legion

13th - Bridge Club @14:00 Methodist Hall

14th - Fitsteps @11:15am

14th - Marnhull Garden Club Christmas Party @19:00

16th - Marnhull Community Café @10am

17th - The Marnhull Hub and Repair Café @10am

20th - Bridge Club @14:00 Methodist Hall

24th - The Marnhull Hub and Repair Café @10am

27th - Bridge Club @14:00 Methodist Hall

27th - Moviola @19:00

29th - Marnhull Ramblers - Long Walk - 4-7 miles @10am

31st - The Marnhull Hub and Repair Café @10am

JANUARY 2023

3rd - Bridge Club @14:00 Methodist Hall

5th - Craft Club @10am Methodist Hall

7th - The Marnhull Hub and Repair Café @10am

10th - Bridge Club @14:00 Methodist Hall

14th - The Marnhull Hub and Repair Café @10am

17th - Bridge Club @14:00 Methodist Hall

21st - The Marnhull Hub and Repair Café @10am

24th - Bridge Club @14:00 Methodist Hall

24th - Moviola @19:00

**FOR VILLAGE
HALL BOOKINGS**Email: [bookings@](mailto:bookings@marnhullvillagehall.org.uk)marnhullvillagehall.org.uk

Phone: 07376 911878 (between 9 and 5 weekdays)

**SUBMIT YOUR
EVENTS INTO A
LIVE CALENDAR**

On the messenger website and they'll be added to this diary in the next issue!

www.marnhullmessenger.org.uk

STURMINSTER NEWTON MEDICAL CENTRE



From the Managing Partner, Sara Froud.

We appreciate that it is difficult for patients to contact us by telephone. This is purely due to the increasing workload and lack of staff. Currently, we are 50% down on our administrative staff and despite advertising and recruiting, we haven't managed to get up to capacity yet. It takes time to train staff thoroughly and some of our new members have found the job too challenging. We appreciate your compassion and patience when speaking to our staff.

Due to demand and pressures on the phone we have implemented Klinik as part of a solution. Klinik is to help the practice ensure patients see the right person at the right time and also to reduce activity on the phones.

Klinik is a web-based solution, for patients that are able and willing to use technology. On the website www.blackmorevalesurgery.co.uk click on **Klinik** and answer a few questions to help us prioritise the request and ensure that the patient needs are met.

This will either result in a face to face or telephone call with the appropriate clinician and will reduce wasted appointments and meet the clinical needs. It would be really helpful if patients could pick up the calls we make making following their Klinik request, as some patients are not answering and are hard to contact when we call to inform them of the outcome.

You can watch a short video on the website explaining how Klinik works. So far 70% of requests for appointments have come through Klinik which has made a big difference to the teams. This is not as noticeable at the moment, to the large number of vacancies on our administrative side however, it will improve as we recruit.

At present, Marnhull Surgery is only open on Monday and Tuesday mornings and not on the other days, purely due to the inability to recruit clinical staff, including GPs. It is far safer for clinicians to be on one site to support each other than being in a remote location. We apologise to people in Marnhull who would prefer to be able to be seen more locally, however this is just not possible at the moment.

The HOPE Course

HOPE stands for Help Overcoming Problems Effectively. The HOPE course is a new offer that provides a six-week group for anyone who feels that they will benefit from it. The course helps to focus on the person and not solely on a long-term health condition or life changing event. It helps people to discover new strengths and rediscover old ones to keep themselves well. It also aims to boost self-confidence and resilience, to help cope better emotionally, psychologically with life's challenges. The courses empower people to manage their health and wellbeing and to flourish in their working and personal lives.

The course is in person and has 12 places.
15th November - 20th December - Tuesdays - 9:30-12:30
Raleigh Hall, Digby Road, Sherborne, DT9 3NL
Facilitators: Liz Rose & Jill Warburton
Contact: jill.warburton@helpandcare.org.uk Tel: 07977 947182

Prescription Requests

Marnhull Pharmacy is no longer taking prescription requests.

From now on, you can make these requests by -

- 1 - Ticking the required items you require on a prescription counterfoil, or write out your request and take it to one of the surgeries. Marnhull Surgery currently is only open on Monday and Tuesday mornings.
- 2 - Email your requests to bv.prescription@dorsetgp.nhs.uk
- 3 - Register with the Practice for online access where you can manage your prescriptions, check test results, view your patient records etc.
- 4 - Use the Alphaqa App - which you can find in an online app store.

MARNHULL GREEN TEAMS

MARNHULL GREEN
T-E-A-M-S

Talking the Environment. Around Marnhull Seriously

Going Solar, Driving Electric

Thinking of 'going solar', harnessing the sun's energy to provide you with electricity? Or perhaps you are considering buying an all-electric car, or a bike? Well, come along to Marnhull Village Hall on 4 & 5 November! Marnhull Green Teams have organised two free events that should help you.

The energy crisis and the wider climate crisis mean that most of us are looking at ways of reducing our fuel bills and our reliance on fossil fuels. One way of doing this is to install photo-voltaic (PV, or solar) panels on your property. Another is to add batteries to store the electricity you generate, for use when the sun isn't shining. A third is to make the move to electric transport.

'Going Solar - meet the installers' is a free drop-in session at the Village Hall on Friday evening, 4 November, 7-9pm. The companies attending like to work on several installations in the same area: it helps them and it may well help you, with potential savings to be had, financially and/or in time waiting for the work to be done. This is a 'marketplace' event, without presentations; an opportunity to come and chat with the experts.

It is important to note that Marnhull Green Teams' are only facilitating this event. We are not arranging a community fit, nor are we recommending particular installers. If you wish to progress an installation, that will be a matter for you and the company you choose. There will also be a Retrofit stand at the event, where you can discuss the whole-house approach to energy use. And villagers will be there willing to share their actual experience of PV panels and batteries.

The following morning, Saturday 5 November, 10-12, there will be an **Electric Vehicle Show**, also at Marnhull Village Hall. This is an opportunity to chat with people about their experiences with electric vehicles - on two wheels or four. Suppliers will not be present at this one, only users or potential users of electric cars or bicycles. The event is being held in conjunction with the Marnhull Hub and Repair Café, so drinks and cakes will be available. Our village recycling centre will be open too.

Do come along to one or both of these free events - and tell your friends! And there's more help available. Dorset Council, together with BCP Council and Public Health Dorset, have appointed Ridgewater Energy to provide free, impartial energy advice, including on current funding support schemes. Depending on your circumstances they may also be able to install free cavity wall insulation and/or free loft insulation, or install new heating systems or replace existing boilers.

For more information visit www.healthyhomesdorset.org.uk; call freephone 0300 003 7923; or text INSULATION followed by your NAME to 07984 440584 and they will call you back.



• Open Daily • Family Friendly • Dog Friendly • Easy Access • Takeaway Service • Cater for Varying Dietary Needs • Large Car Park

**Timeless and steeped in character, charm & literary interest,
The Crown Inn offers the very best in Dorset hospitality.**

Whether you're looking to dine or enjoy bar refreshments or to relax over a coffee or tea, our extensive meal & drinks ranges are sure to appeal.

We also specialise in functions & events catering for all types of celebratory occasions & family events, as well as corporate catering needs.

Our attractive outdoor spaces are ideal for al fresco dining & drinks, as well as to host BBQs, hog roasts & buffet events.

We also offer B&B accommodation by way of seven characterful, homely & well-equipped guest rooms.

For opening and food service times, menus and further information, please visit our website.



The Crown Inn, Crown Road, Marnhull, Dorset, DT10 1LN

Tel: 01258 820224

Email: info@crownninn-marnhull.co.uk | Website: www.crownninn-marnhull.co.uk | Facebook: www.facebook.com/crownninnatmarnhull

DSN Carpentry

All internal and external carpentry undertaken

- Kitchens
- Bespoke Builds
- Renovations
- Garden Buildings

Tel: 07541377486
Email: dsncarpentry90@gmail.com

No Gimmicks Quality Products

PITMAN WINDOWS
Windows - Doors - Conservatories

Combining a personal service with competitive prices using quality products

**Windows Doors Conservatories
Replacement roofs Fascia Soffits & Guttering**

Tel 01747 840268 or 0800 0833623
Website: pitmanwindows.com

THE ANNUAL GENERAL MEETING



We are looking forward to seeing you at the Annual General Meeting of the Marnhull Village Hall which is being held on Friday 18th November 2022 in the Village Hall.

The doors will be open at 7.00 p.m.
with the meeting starting promptly at 7.30 p.m.

All the relevant papers will be available on the Village Hall website and we urge you to read them prior to the meeting so that any questions you may wish to raise can be addressed.

ROYAL BRITISH LEGION



Following the Parish Council's setting up of insurance for the Remembrance Sunday parade it seems that our troubles were over and we could carry on as before. However following contact with the Gillingham Town Silver Band it appears that their involvement isn't as definite as we had hoped. We will go ahead as if it is but by the time it is settled it will be too late to go in the Messenger so keep an eye on the Marnhull Facebook page for any changes. I will be contacting all the usual paraders in the next few days but if you are new and wish to parade contact me on the number below. However the Remembrance Sunday service will go on as usual in St Gregory's Church, commencing at 3pm with the wreath laying straight after and then back to the Legion for refreshments. All are welcome to attend. There will also be a short service and two minutes silence at the memorial on Friday November 11th at 11am. Again all are invited to attend and as usual we will be inviting children from both of the village schools to come and lay their wreaths. It has become an integral part of the service. The whole thing usually only takes ten minutes so if you can find a moment in your busy lives we would be glad to see you. Meanwhile back at the Club Lyn Bartlett's combined birthday and retirement was turned into a fund raising event for Weldmar Hospice Care with £700 being raised for this deserving organisation. Well done Lyn. The annual fish 'n' chip Poppy Quiz will be on Saturday November 12th. No need to book but a phone call to let me know you are coming would be appreciated. We are looking at 7 for 7:30. Sadly it had to go up to £10, hope to see you there.

November Entertainment

Sat 5th - Alto

Sat 12th - POPPY QUIZ 7pm

Mon 14th - Bingo 7pm

Sat 8th - The Originals

Sat 15th - Bill Shannon's Soul and Motown Disco

Sat 19th - The Originals

Sat 26th - Bax and Debs

Mon 28th - Bingo 7pm

For Branch business contact Jack Whitehead on 01258 820800
or whiteheadjack51@gmail.com
For Club business ring Tony on 01258 820397



Going Solar Meet the installers!

Thinking of installing solar panels or batteries?

Marnhull Green Teams have arranged a free drop-in session with local installation companies; so you can ask questions and take your project forward

Friday 4th November
Marnhull Village Hall 7 - 9pm
For more info contact

marnhullgreen@outlook.com or 01258 268714



QIGONG & TAI CHI

Recommended for relaxation, reducing stress and even helping the body to heal when sick. Regular Qigong practice can reduce pain, stress and Anxiety and the effects of sickness from the body.

Mondays: Marnhull Methodist Hall 13:00-14:00

Wednesday: Big yellow bus project Shillingstone 11:00 - 12:30

Geoff & for other local classes

07941115352

geoffrey1145@gmail.com

www.fountainofzentaichi.com

MARNHULL MUSIC SOCIETY

Meets every 3rd Monday of the month (except July and August) at 7:15pm in the village hall.

We listen to a varied programme of music (mainly but not exclusively classical) presented by one of our members and enjoy a social 'cuppa' during an interval.

For more information, please contact

Alan Loukes on 01258 821629

MARNHULL AMBLERS & RAMBLERS

Short walk (amble) approx 3 miles

Second Thursday of the month a.m

Contact for details: Elaine Spencer-White - elainesw48@gmail.com

Longer walk (ramble) 4-7 miles

Last Thursday of the month a.m

Contact for details: Anne Dowsett - dowsetanne52@gmail.com



3 Newbury, Gillingham
SP8 4QX (Opposite Lidl)

Te. 01747 821010

www.norddisorset.org.uk

Reg. Charity No. 1110328

We can provide the following:

- New & used equipment
- Hire equipment
- Disposable items
- NHS hearing aid batteries
- Information & advice
- Volunteer opportunities
- Call us for information
- Open 10am to 4pm Tues, Thur & Fri
- 10am to 1pm Sat.



6 New Street, Marnhull DT10 1PY

Tiling, Slating, Leadwork, Timberwork
New & re-roofing work undertaken

Nick Upshall
Tel: 01258 821231
Mobile: 07801 851079
www.camelotbuilders.co.uk

Paul Woodrow
Home and Garden Services



Fully insured garden maintenance and handyman service across the Blackmore Vale

07392727584

office@woodrowhomeandgarden.co.uk

[@woodrowhomeandgarden](https://www.facebook.com/woodrowhomeandgarden)

www.woodrowhomeandgarden.co.uk

**The Barn
Bed & Breakfast**

Quiet, Comfortable and Friendly
on the edge of the village

Hillside
Marnhull
01258 820912

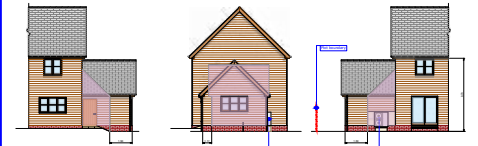
www.thebarnbedandbreakfast.co.uk

**PARTNERSHIP
FIRE AND SECURITY**

Contact

Tel: 01747 858888

enquiries@partnershipsecurity.co.uk



**IAN OSMAN
DRAUGHTING SERVICES**

AutoCAD building and landscaping
design service.

For more information please contact me on

01258 821690 / 07746 539943

ido3d2d@gmail.com

& Facebook

**The Old Bank
Bed & Breakfast**

*Comfortable, friendly,
Family Home
In the centre of the village*

The Old Bank,
Burton Street, Marnhull
01258 821019

enquiry@theoldbank-marnhull.co.uk



Lavenders
Green

Complementary Therapies
Yoga, Reiki, Reflexology, Massage, Aromatherapy
Human Givens Psychotherapy/Counselling &
Radionic Treatment

**Tanya Green ITEC
Traditional Yoga Association**

T: 01258 820410
M: 07729 301387
E: tanya@lavenders-green.com

Online Yoga classes available at
www.lavenders-green.com

Contact details for Your Dorset Councillor
Graham Carr-Jones

☎ 01963 364005

✉ Clrgraham.carr-jones@dorsetcouncil.gov.uk

Graham Carr-Jones
Stalbridge & Marnhull

Cabinet Member for
Housing, Community Safety
& Emergency Planning



ENGINE EVOLUTION.com



**DIAGNOSTICS - REMAPPING - SERVICING - REPAIRS
AIR CON - WHEEL ALIGNMENT - ROAD - RACE - RALLY**

07504 511730 01935 362811



**UNIT 11 / 12
GIBBS MARSH TRADING ESTATE
STALBRIDGE, STURMINSTER NEWTON, DT10 2RY
CONTACT NIGEL MARSH**

WWW.ENGINEEVOLUTION.COM

Marnhull Computers

Specialists in the setup and repair of all makes of computers, laptops, tablets and mobile phones



- New computers
- Upgrades & Repairs
- Speed up slow computers
- Software rebuilds
- Virus/Malware removal
- Screen Replacement

Do you have an old or broken computer and would like to safely recover treasured documents or pictures?

Based in the village with over 35 years experience and supplier to The Crown Inn

Call Mark on 01258 821686 or email mark@marnhullcomputers.com

EXPECT *Far* MORE

At Farnfields Solicitors you can always expect a warm welcome combined with dedicated expertise and transparent straightforward pricing. All in all, when choosing us you can expect far more peace of mind.



e-mail: info@farnfields.com or visit www.farnfields.com



Farnfields
SOLICITORS

ACCOUNTANCY PLUS (DORSET) LIMITED

CHARTERED ACCOUNTANTS AND TAX CONSULTANTS

- Quick Books & Sage Expertise
- Accounts Management
- Personal & Corporate Taxation
- Book-Keeping

01258 820709

Email: info@accountancyplusdorset.co.uk
Contact: Mr Kim Harden, FCA, FCCA
4 New Street, Marnhull DT10 1PY

Happy Pets and Home Service

House Sitting

Pet Care

Garden Care

Painting and Decorating

Call Juliet: 07773 566425



Hawtree & Sons

RIVERSIDE GARAGE, A30 WEST STOUR, GILLINGHAM,
DORSET SP8 5RJ

MONDAY TO SATURDAY: 7am - 10pm • SUNDAY: 8am - 10pm

MARNHULL STORES, NEW STREET, MARNHULL, DORSET DT10 1PX

MONDAY TO SATURDAY: 7am - 8pm • SUNDAY: 8am - 1pm

Serving the Blackmore Vale for over 30 years *Local...Convenient...There for you!*

MARNHULL

STORES

ALL DAY SUNDAY

**NOW
OPEN**

8am - 8pm



**ROYAL BRITISH LEGION
MARNHULL BRANCH AND CLUB**

LEGION HALL, SODOM LANE, MARNHULL
TELEPHONE: 01258 820613

Clubhouse open hours

Mon-Thur 8-11.30pm, Fri 8-12pm, Sat-12-3pm, 8-12pm

SKITTLES (LEAGUE and FRIENDLY) - DARTS - POOL
LIVE ENTERTAINMENT

(see Blackmore Vale Magazine or ring for details)

BRANCH AND CLUB MEMBERSHIP NOW AVAILABLE

FAMILIES MOST WELCOME

Come along and see what we can offer you

Branch: branch@marnhullrbl.wanadoo.co.uk

Club: club@marnhullrbl.wanadoo.co.uk

Alternate Mondays
PRIZE BINGO
7.10pm
Open to everyone

OXFORD
Building & Carpentry Ltd

- Complete House Renovations • Staircases Remodelled
- Kitchen And Bathroom Installations • 1st And 2nd Fix
- Cut And Truss Roofing • Replacement Doors

Contact Pete Oxford T: 01258 820850
M: 07970 156735 oxfordp@yahoo.co.uk
Chippets, Chappel Lane, Marnhull DT10 1NN



Williams Florist
floristry & gardening

Do you have something
special to say?

Full florist service available
Local delivers & Eflorist relay
members

Say it with flowers...

Station Road, Stalbridge
Dorset, DT10 2RQ

Tel: 01963 362355

Email: williamsflorists@live.co.uk

www.williams-florist.co.uk



PESTWRIGHT
THE COUNTY MOLE
CATCHER

Complete pest control services
Friendly, reliable service
BPCA qualified,
Insured
Call Jim on
01963 362292



- All aspects of tree surgery
- Dismantling and felling
- Pruning
- Tree disorders and solutions
- Tree pest and disease analysis

Telephone 01747 850 253
e-mail info@hawesarborists.co.uk

We are very proud to have received Arb Approved contractor status and are covered by the Government accredited Trust Mark scheme.

NPTC Certified • Tech.Arbor.A Qualified
All work carried out to BS3998 Standards



Peter Jackson
Funeral Services
at
Henstridge

Independent Family owned and run
Funeral Directors
24 hour service
Private Chapel of Rest

Telephone: (01963) 362570



Foot Care in the Comfort of Your Home.

Corns, calluses, problem nails etc.
Friendly, female practitioners

www.bmvfootcare.co.uk

01258 820203 | gillian@bmvfootcare.co.uk

CT Building

Building & Carpentry

Mappowder, Dorset

07815 859 339

c-tbuilding.co.uk

ctbuilding606@gmail.com

**GRASSBY & CLOSE
FUNERAL SERVICE**

4 Innes Court,
Sturminster Newton,
Dorset DT10 1BB

01258 471024

www.grassbyclose-funeral.co.uk



Seamstress

Clothing alterations,
made to measure curtains
and blinds.

All jobs considered.

Call Rosie 07780703641

rneedlethread@hotmail.com

James Colmer Hair & Beauty LTD

The Beauty Room by Jane Colmer

Simply struggle to cut your toe nails?

Come see Jane and get those toe nails seen too,
A simple service with a caring touch!

Men and ladies' feet are very welcome!

30 mins service.....Just £14

Burton Street, Marnhull
01258 820033

Many more treatments available



CLASSES IN BROADSTONE, WINCANTON, MARNHULL,
MOTCOMBE, OKEFORD FITZPAINE

**CONTACT: HAYLEY SANDELL,
POUND PRO**

07786 553889

HAYLEY.SANDELL@OUTLOOK.COM

A CALL FOR CITIZENS ADVICE VOLUNTEERS IN NORTH DORSET



"I felt like I had a friend in my corner helping me navigate the system." Just one comment from a satisfied client of Citizens Advice. Others talk about the immense benefit of being able to talk to someone, having back up and being pointed in the right direction, to help solve their problems.

The service provided by Citizens Advice is in great demand due to the increasing number of people in the community who are facing real hardship, as a recession looms. The cost of living crisis, rising food and fuel prices, redundancy, debt and so on, creates huge pressure and anxiety, but Citizens Advice with over eighty years' experience, is perfectly placed to help. However, they need more Volunteer Advisers in North Dorset, to cope with the increasing workload. So, do you have what it takes to volunteer? Advisers come from different backgrounds, ages and varied life experiences, but all have one thing in common - they want to help their community. Helen, a retired teacher has found volunteering for Citizens Advice to be a unique opportunity to do something positive for the community. Colin says it takes him out of his comfort zone and keeps him mentally stimulated. Sheelagh wasn't ready to retire fully, so wanted an opportunity to keep her brain active and give something back to society. In terms of qualifications, you need to be a good listener, IT literate and have a passion for wanting help others. Full training and support are provided and there is flexibility about how much you do and when and where you offer advice.

Telephone 01747 834900 for more information and don't delay - call today and make a difference!

As one client put it "I don't know who I would have turned to, had your services not been available."

COMMUNITY CHOIR

Eighteen members of the Choir were delighted to sing at the special Commemorative Service for the late Queen on Sunday 9th October at St Gregory's Church and sang the Howard Goodall version of *The Lord is My Shepherd*. Thank you Rev. Gaynor for inviting us and we look forward to further opportunities for singing in our beautiful village church.

Start the Christmas season with a song - an evening for ALL the family to enjoy! The choir are excited to announce an evening of songs with COLOUR as its theme. The songs will include a selection from that family favourite musical *Joseph and the Amazing Technicolour Dreamcoat*.

Other songs include *Blue Moon*, *Yellow Submarine*, *Blueberry Hill*, sung by the men and *Greensleeves*, sung by the ladies and star turns from our Music Director and Accompanist. There will be mulled wine and mince pies during the interval before you are invited to enjoy a merry drift on a *Sleigh Ride*, whilst hearing *Silver Bells*, greet *Rudolph* and prepare yourself for a *Winter Wonderland*.

Please come and support your village choir and enjoy a warm welcome from all our members.

Tickets available from Robin Hill Stores at £10.00 for adults and £5.00 for Under 16's.

Friday 2nd December 2022 at 7:30pm in the Village Hall.

MARNHULL PLAYERS PANTO



Rehearsals are going really well and we are all starting to find our feet with our characters. We have started adding in dances and getting our singing voices ready. We have only just started the dances and everyone is picking the moves up really quickly, so come February they will be perfection haha!

We will be getting the costume crew together over the next few weeks so we can start getting ideas for what we will be wearing. This is always an exciting time.

Stage developments are still in the process of getting sorted hopefully it will start to show shortly. then the painting can start, and we can start putting props on the stage so we know where things will be.

Tickets will be on sale from 1st December, Prices information will be in the next issue and the poster will start to go up around Marnhull before the 1st December.

The Performance dates are:

Friday 3rd February 2023 at 7pm
Saturday 4th February 2023 at 2pm and 7pm
Sunday 5th February at 2pm

Would you like to be involved in this fun pantomime group? Even if you don't want to be on stage, there's plenty of roles to help out with - no experience needed, we would love to have you on board.

Contact Emma at marnhullplayers@gmail.com

FINDS DAY

Sturminster Newton Museum invited Ciorstaidh Hayward-Trevarthen, Dorset Finds Liaison Officer, for another regular visit at the end of September; the session was very well attended. Among the items brought in for identification were a piece of gilded horse harness (the 2nd half of a piece brought in earlier in the year) and a tiny medieval oil anointing flask.

There were several fossils, mainly sea urchins, and sponge fossils from local Marnhull limestone. Also identified were pieces of worked flint, a fragment of a bronze age sword and a middle bronze age palstave axe. Some of the finds were taken back to the Dorchester office for further recording.

If you have an object of interest, dug something up in your garden or maybe have a family treasure, why not come along to our next Finds Day at the Museum which will be on Thursday 26th January 2023 10am - 2:30pm.

MARNHULL WOMEN'S INSTITUTE

Many folk will have experienced feeling rather useless when they come across a sick or abandoned hedgehog in the garden. We all want to help the little creatures but what is the best thing to do? Jeanette Hampstead from the Hazelbury Hedgehog rescue centre came up with the important information: put it in a box and keep it warm. Evidently hedgehogs can become chilled all too easily and their hibernation mechanism can be triggered at the wrong time. Give it water at first, and only move on to cat food in jelly when it seems to be feeling livelier. Then get on to the Rescue Centre. On no account give it milk or bread - hedgehogs are lactose intolerant and don't digest vegetable matter easily so stick to the cat food. Ever since she rescued her first hedgehog in 2016 Jeanette has been sheltering and rehabilitating the little prickly creatures and she has a wide understanding of their needs and lifestyle. Hedgehogs have poor eyesight but a very good sense of smell and sharp hearing. They can detect their prey hiding under the soil, usually insects and grubs, and they use their pointed noses as digging tools to excavate. They also eat butterflies and moths as well as the eggs of ground-nesting birds. A mother hedgehog nurses her offspring for five or six weeks then simply abandons them to an independent life. In the autumn a hedgehog needs to put on weight in preparation for the months of hibernation. They prepare their nests with almost any suitable material they can find: scraps of paper, dry leaves, sheeps' wool and so on. As they go into hibernation mode they begin to shake and stop eating. Their body temperature drops and their heart rate slows dramatically. Jeanette suggested filling the entrance tunnel to a hedgehog box with straw to deter rats and cats, but she warned us that hedgehogs were independent-minded animals and there was no guarantee that one's carefully prepared hedgehog house would attract a tenant.

Our speaker in November is Ken Fowler and his talk is entitled "Race to Scotland in a tub-sized dinghy," Come and hear what that's all about.

MARNHULL WELCOMES NEWCOMERS



On Friday, 30th September at Marnhull Village Hall saw the tradition of Marnhull Village Care welcoming those families that had moved into the village since 2021. Although it was sad that less than fifty per cent bothered to reply to their invitations. Those present were updated on

the many facilities the village has to offer and received information; it was also a chance to meet close neighbours who had also arrived in the village. Rev Gaenor Hockey from St Gregory's spoke about the community spirit of the village and that everyone was welcome to attend any of the churches, details of which can be found in the Messenger.

Trevor Vaughan, MBE Chairman of Marnhull Village Care, spoke about how he was delighted to see those present and explained that the function was an annual one but hoped they got the idea behind their invitation. He thanked those who helped organise the event and Dike & Son of Stalbridge, who supplied the food. By the photograph, it would seem all had an enjoyable evening.

Marnhull Village Care

We are an organisation of volunteers which was set up in 1974 by the members of the churches in Marnhull to welcome all newcomers to the village and to offer help and support where possible to anyone of any age who may need it in the village including trips to the hospital, doctors, etc. Plus, a network of Road Contacts covering the whole village.

If you are inclined to help the village, then why not contact Hillary, who will be delighted to explain more?

Transport for medical needs: Ann Davis: 01258 820456 / 07434 638485

Secretary: Hillary Parker - 01258 821667

A SHORT HISTORY OF MARNHULL ENTERTAINS

In 2006 a small group of people from Marnhull Music Society decided that there was a need for live entertainment, both music and drama, in the village and approached Artsreach, a charitable organisation providing rural Dorset with an excellent range of high quality performers with prices at subsidised rates, and thus these events started in the village hall.

Since then we have had a huge range of performances from drama and music to children's entertainment and also children's workshops. Which have been enjoyed by all and well supported. In 2010 we started our film nights in the village hall with the aid of Moviola, who provide a menu of films each season to choose from and also a projectionist who comes with all the equipment plus the screen.

This has been hugely successful both socially and financially and as a result we were able to give a considerable amount of money, around £20,000 to the village hall extension fund and also to buy China, glasses and other equipment for the village hall. We have also hosted parties for the wedding of Kate and William and the Diamond Jubilee and arranged jumble sales etc. as fund raising activities.

Since Covid, like many other organisations we have struggled to get our numbers back as people have understandably been reluctant to go out which means that the last few films have run at a loss.

The cost of a ticket is £5, we have not put up our prices since we started but rely on people buying a drink, ice cream or raffle ticket to bolster the profits. If you have not had the "moviola experience" we urge you to try it and come and support us.

We sadly said goodbye to our long time projectionist Paul at the end of the summer, he had been with us since we started and is sadly missed. We are fortunate to now have a new projectionist Ben who we welcomed last month.

We are now looking to buy our own screen for the village hall and our own projection equipment. This will be expensive and require considerable fundraising. This equipment will benefit all organisations using the village hall and we already have offers to help to raise that money from some village organisations.

We would love to see you all in the village hall for our movie nights once again, now we have more capacity there should be room for all. Please look out for the yellow posters around the village advertising the next film. If anyone in the village has any in depth knowledge of screens and projection equipment please can you contact us.

With many thanks from the Marnhull Entertains Committee.

MARNHULL ENTERTAINS

presents

The Ridgeway Singers



A true celebration of a traditional Dorset Christmas

With their roots in the South Dorset Ridgeway and inspired by the rich sources of locally collected folk songs and West Gallery carols, the Ridgeway Singers and Band led by Tim Laycock and Phil Humphries have once again tuned their fiddles and voices to present a joyous celebration of Christmas past and present, including works from the Hinton St Mary and Fordington manuscripts together with newly composed carols in the Dorset tradition.

St Gregory's Church
Sunday 4 December
at 4.00 pm

Doors open 3.30 pm

Tickets: £8.00, under 18s £5 or Family £20

Available from:

Robin Hill Stores: 01258 820959 or Marnhull Stores: 01258 820116

Book online at Artsreach <https://artsreach.co.uk/event/west-gallery-carols>

NEWS FROM TRADING STANDARDS - ILLEGAL TOBACCO

Smoking is seriously addictive and is the single greatest cause of preventable illnesses and avoidable death in the UK. The market for cheap, illegal tobacco, undermines public health.

There are three types of illegal tobacco:

Counterfeit. This claims to be an established, well-known brand. But it's not. It's fake.

Non-duty paid. Legitimate tobacco purchased abroad cheaply, brought back to the UK, and sold at a fraction of the UK retail cost.

Unknown brands. Made for the illegal market and unregistered.

Genuine tobacco products are manufactured to strict quality control procedures as manufacturers want all their products to be the same. A consumer will not know what contaminants, in what levels, are contained in their illegal tobacco bought from an illegal supply route.

Tobacco is taxed heavily as a deterrent to persuade people to stop smoking. The unpaid duty on illegal tobacco was estimated at £2.5 million in 2017; money that should have otherwise gone towards funding hospitals, schools and other services.

Trading Standards officers who deal with illegal tobacco sellers often

also discover involvement with other criminal activity such as drugs, stolen items, counterfeit goods and abuse of the benefits system. Profits made from the sale of illegal tobacco are then fed back into the criminal activities. These issues can have a negative impact on local communities.

The sale of illegal tobacco is not limited to shops, although this is still prevalent. Its sale can take place from private homes, pubs, clubs, car boot sales and via social media such as Facebook. You must be 18 to buy tobacco in the UK. Illegal sellers can target children, recruiting new smokers to keep their business sustainable.

All genuine tobacco products sold in the UK must be sold in standardised (olive coloured) packaging. If tobacco is cheap, then the chances are it is illegal. You can report illegal sales to Trading Standards via that Citizens Advice Consumer helpline on 0800 2231133.

MARNHULL TENNIS CLUB

Though the main season has now come to a close there's still lots of chances to play throughout the Autumn and Winter months - just add layers! There is also **half price membership** available for the rest of the season (until the 31st March 2023) if you are looking to join.

A special mention and thanks to John Seear for organising the **end of season Fun Day**. We had a strong turnout with members of all abilities having a go at lots of fun games. And further thanks to everyone who bought along one of the delicious cakes we enjoyed at the tea break. The club organises a number of fun open events throughout the year, all included in the membership.

COMING UP IN NOVEMBER...

NEW WEEKEND CLUB SESSIONS - OPEN TO ALL!

Now that the light has gone in the evenings, we are trialling a weekend club session open to all ages and abilities. Starting in November, sessions will be held on alternating Saturdays and Sundays giving everyone a chance to play, plus there will be the option to use the ball machine. For up to date dates and times, head to the website: **www.marnhulltennisclub.net** and go to the events page. **No need to book, just turn up and play!**

FRIDAY MORNING CLUB SESSIONS

Fridays 9:30am - 11:30am

Continuing throughout the year, these are open to all members and any age and ability. Singles or doubles will be formed depending on numbers, and everyone will get a chance to play. For further information contact Chris Gregory on 01258 474646 or c.j.gregory@outlook.com.

COACHING

Private and group coaching is available from our LTA registered coach Graham Howell. Regular shot clinics are organised for club members - check the website for up to date details at www.marnhulltennisclub.net or contact Graham on 01747 837839 or 07931 584778 for individual lessons.

To keep up to date with all events and news, head to our website **www.marnhulltennisclub.net**

ADVANCE NOTICE - STURMINSTER NEWTON HERITAGE TRUST

Our AGM will be held on Wednesday 2nd November in the Exchange at 7:30pm. Sturminster Newton High School students will present the film, 'Swanskin Seafarers of Sturminster Newton', as well as a video and podcast from Newfoundland and talk about this exciting project. Learn more about your local history, a brilliant evening! Everyone is welcome to this free event and visitors are invited to stay on for the AGM.

CONTINUED PAGE RIGHT

>>

BLACKMORE VALE INN NOTICE

Dear Patrons Past, Present and Future,

It was suggested that, as Landlord, I should write a few words explaining our strategy for the forthcoming dark winter months.

It's clear that the cost of energy will be a big issue for all this winter (we've recently seen one very popular pub in North Dorset announce immediate closure) and we have decided to reduce our energy footprint to reduce costs during this typically quieter time for the pub.

As a Public House which always welcomes groups of people as guests to warm themselves around a roaring fire, from today, we will be setting the wood fires alight ready to welcome you from 5pm on Thursday evening, and from mid-day Friday to Sunday. On Mondays, Tuesdays, and Wednesdays (the typically quieter part of the week for the BVI), we will be closed to conserve energy and reduce costs.

However, there will be an exception on those Tuesdays when the BVI's Skittles Team has a home match when the fires will be lit and the bar will be open from 5pm. Currently there are home matches scheduled for: 18th Oct, 1st Nov, 22nd Nov, and 13th Dec.

I trust this assists in understanding the rationale behind the change to our regular opening hours.

In other news... the BVI has a new, professionally trained, and highly experienced ('seasoned'!) Chef. A point of contention for many in the village for a number of years... and I hope this positive move will mean that you will come in and sample our latest offerings, dining packages, and our Christmas menu which will be available throughout December (including New Year's Eve).

We continue to be the eclectic and best kept secret in Dorset but are slowly opening our arms to the modern world for those of you who demand constant social media updates of life in the Vale. Please come in and sample what you have got in the village of Marnhull, and we hope you will enjoy what you find.

Updates to menus and events are posted on our social media feeds (Facebook and Instagram) and I welcome you all to join me and the team around the communal fires here in the BVI to enjoy repartee and social discourse, fine food and drinks through the Winter of 2022 and beyond.

With Kind regards,
Mark, the landlord of the Blackmore Vale Inn

MARNHULL MUSIC SOCIETY

After a couple of disappointing years, Music Society members were determined to have a good time at our annual garden party. On a stifling Sunday evening in August a team of stalwarts gathered to erect the marquee we would use for the following day. It was hot and thirsty work and when the tent was standing and every last peg had been hammered in it was natural to collapse in the shade and absolutely vital to crack open a couple of bottles of chilled white wine. So party No 1 evolved. As the sun set we gathered ourselves and headed home to prepare for party No 2 the next day. In the Music Society we pride ourselves on giving value for money.

In September our programme of concerts began with another admirable selection compiled by our chairman, Judy Fyfe. Judy has a deft touch in these matters and always gives us plenty of old favourites interspersed with unfamiliar pieces. She began with Vaughan Williams' overture to

"The Wasps" and followed with a light textured concerto by Haydn. There was a fairly rumbustious vanity piece composed by Rossini to celebrate the coronation of King Charles X of France in 1852. and part of Bruch's "Scottish Fantasy". The first half ended with Frank Sinatra singing "You make me feel so young."

After coffee we had the overture from Weber's opera, "Oberon" and then the absolute classic of military marches, Sousa's "Liberty Bell." One item that caught my fancy was the hitherto unknown (to me at least) segment from Rimsky Korsakov's "Mlada Suite". The Russians may not be currently very popular but they can certainly write superb music. By way of contrast Judy played a piece by Milhaud called "Le Boeuf sur le toit" with its surprising Latin American rhythms.

There was much more of interest and enjoyment in this programme and it made a colourful start to our concert season.

In November there is to be a presentation by Bridget Brown.

MARNHULL ENTERTAINS

in association with

DORSET MOVIOLA

ELVIS (PG-13)

Marnhull Village Hall
Tuesday 22 November

at 7.30 pm



ELVIS

The life of American music icon, Elvis Presley, from his childhood to becoming a rock and movie star in the 1950s while maintaining a complex relationship with his manager, Tom Parker

Doors open 7.00 pm
Tickets: £5.00

Available from:

Robin Hill Stores: 01258 820959 or Marnhull Stores: 01258 820116

MAKE NEW FRIENDS, LEARN NEW SKILLS

Sturminster Newton Heritage Trust are looking for volunteers at the mill and museum. Volunteer opportunities are available for all ages and skill sets, in Archives, Audio visual, Collections, Education, Exhibitions and Events, Front of House, Marketing, Out Reach work, Social Media, Research, Website and IT. Some volunteer positions can be done remotely. If you are interested, feel free to contact us at any time to arrange an informal chat with a volunteer. You can email via our website www.sturminsternewtonmuseum.co.uk or phone Zilla Brown 01258 473178. We look forward to hearing from you.

CONTINUED PAGE RIGHT

>>

A Mini Trailway Path for Marnhull



Pedestrians, rambles, dogwalkers, cyclists and horse riders are part of everyday life in Marnhull. The roads though are getting more dangerous, the traffic bigger and with a lot of roads not even having any pavements - what can we do?

Being outside in the fresh air is important, doing something that we love with our animals, or just being able to meet people, chat to friends, getting some exercise - is all part of supporting our mental health and long-term wellbeing. We've heard that many of our older community no longer feel safe going out walking anymore and this is very concerning - it can easily lead to increased isolation and loneliness.

As a group we are asking the Marnhull Community to pull together to help us raise the funds we need to create a safe, all weather route that will take us away from some of the roads and from huge vehicles, coaches and farm traffic (that squash you against the hedge!).

With that in mind we want to complete the work on the Ham Lane track which runs from the end of Ham Lane to Mill Lane. This will give us:

- A permanent surface - approximately 750 metres in length.
- The ability to walk or ride it safely, throughout the year.
- It will also provide new opportunities to join quieter village lanes and footpaths.
- It will only be 1.5 metres in width, to prevent vehicle access.

By improving this route, it will give everyone the opportunity to get out and about, especially during the winter and time to enjoy this quiet space and not have to worry or think... "ah, here comes a tractor" also it will offer everyone a moment to relax and enjoy - whatever the time of year.

The Marnhull Horse Riders have raised around £4,500 already so we are looking to raise the same amount through local donations and fundraising events. We are planning an Equine Talk evening on November 28th and a Village Christmas Quiz Night (with food) on Saturday December 10th.

We would welcome everyone's support with this great community project. You can help us by donating, we have a Facebook Just Giving Page. Alternatively, you can pay by cash or cheque and make cheques payable to Marnhull Horse Riders. These can be dropped into Robin Hill Stores or the Spar. Contact us email - marnhullhorseriders@gmail.com or call 07711 089403 for more information. We very much appreciate your support. Thank you.

Together we can create something special for tomorrow



VOLUNTEER REQUEST



Interested in volunteering?

New to the area and looking to meet people, make friends and have a bit of fun?

Parkrun could be just the thing

for you - it is a free timed weekly run/walk/jog and is totally organised by volunteers.

Henstridge Airfield Parkrun is looking for people to volunteer to enable those that wish to run to do so in a safe and fun environment. Parkrun isn't all about runners and running. Many people participate to make new friends, enjoy the fresh air, to have a bit of fun and to make a positive impact on their well-being. If you have a couple of hours to spare on a Saturday morning, why not give it a go...?

The run starts at 9am, but volunteers should ideally be on site by 08:40 and you'll be heading for home by 10:30. Come along and see what it's all about. Bring some friends and stop for coffee, or enjoy a lovely cooked breakfast! There's no obligation to commit every week - any time you can spare will be appreciated. Nor is there the requirement to have an interest in exercise or running!

No experience required; full training will be given. Contact: henstridgeairfield@parkrun.com for more information.



SERO present

'What Makes a Virgin an Extra Virgin'
an evening with **Natalie Wheen**
(ex broadcaster on the 'Arts')

Discussing the truths, myths, secrets and scandals of olive oil. Natalie and Deborah MacMillan own 'AVLAKI', which produces Organic ExtraVirgin olive oils from Lesvos, Greece.



Sunday November 27th
Child Okeford Village Hall
7 pm

£10 per person

to include olive oil tasting and snacks

Wine and soft drinks on sale

Raffle. Organic Olive oil and soap for sale.

Proceeds to Julia's House Children's Hospice

Ticket details from:

info@serocharity.org.uk

or ring 01258 861218



OUR LADY'S CHURCH



Catholic Church of Our Lady, Marnhull & St. Benedict's, Gillingham

(www.marnhullandgillinghamrc.org.uk) Tel. 01258 820388

Parish Priest: Fr. Francis Straw OSB

Sunday Masses - 9:30am and 6pm (Marnhull) / 11am (Gillingham)

Weekday masses: check the website.

Parish News: Refreshments are available after 9:30am Sunday mass most weeks.

HMP Guys Marsh: Chaplin: Deacon Michael Turnbull

Contact: michael.turnbull@prcdtr.org.uk

New to the Parish? You are most welcome to our community whether as brand new parishioners or existing ones drifting back to the fold after the imposed separations.

PACT, the Prison Advice and Care Trust, is the Catholic charity that supports prisoners, people with convictions, and their children and families. We provide caring and life changing services at every stage of the criminal justice process: in court, in prison, on release, and in the community. Our President Cardinal Vincent Nichols says, 'This work is a direct expression of our discipleship and a very concrete expression of our desire to serve the Lord in those who are most vulnerable.' Discover more about the work of PACT here: <https://www.prisonadvice.org.uk/>

A lifeline for married couples:

Are you:

- Anxious about your marriage relationship?
- Alone or distant from your partner?
- Disillusioned or bored in your marriage?
- Without the time or desire to communicate?
- Experiencing coldness or conflict?
- Frustrated, hurt or angry with your partner?
- Unable to see how to change your situation?

Call us on 07887 296983 or visit our website:
<https://www.retrouvaille.org.uk>

THE METHODIST CHURCH



Bonfire night may have been and gone by the time you read this but what a beautiful spectacle some firework displays are, cheering and exciting, still mainly on Nov 5th I think! What a thrill it was when young to see the bonfire lit and fireworks explode into light. Poor old Guy Fawkes felt the wrath of the king but at least ended up being remembered even if it is only for his heinous plot. Anyway, I imagine that the youngsters who come to Girls' Brigade enjoy November 5th bonfires and fireworks with their families and friends.



This year the wonderful Girl's Brigade celebrates its 30th year in Marnhull!

Meeting every Wednesday at 6:15 to 7:30pm in the Methodist Church Hall during term time, lots of interesting activities are encouraged. They include Badgework, where tasks are performed and rewarded with a badge of achievement, cooking, crafts, Bible stories and many games. There is an annual enrolment service, held on 16th October this year where three new girls were welcomed and two new Leaders commissioned. All those involved in running the Girls Brigade are fully 'checked' and all give their time on a voluntary basis for which we sincerely thank them. Fifteen girls regularly come to Girls' Brigade and have a good time. They will be attending the Remembrance Day Service at St Gregory's Church on 13th November and participating in this poignant annual service. Girls from 5 years old and upwards are always welcome to join the fun on Wednesday evenings.

If you would like to know more or think a young girl you know might like to join the group please contact Rachael Findlay on 07771 897262.

Village Harvest Supper

The Churches Together Village Harvest Supper on 29th September was well attended and everyone seemed to have a good time. Enjoying the excellent home cooked casseroles and puddings and listening to the poems guests had provided ensured that it was a lovely, friendly evening. Working together with St Gregory's and Our Lady's Churches is good and a big thank you is given to everyone from the three churches who cooked the delicious food and to all those who helped out during the evening. The amount raised for charity is not available as I write but I will include it in December's Messenger.

CONTINUED PAGE RIGHT

>>

Services

We held our Harvest Festival service on Sunday 2nd October and enjoyed lunch after the service prepared by Mike - thank you again to Mike! The produce and other items donated for the service were given to the Pantry charity in Sturminster.

N.B. There will be a Candlelit Family Carol Service at the Methodist Church at 5pm on Wed 21st December.

Worshipping with folk from the other village churches is always a pleasure - the services below are planned for the next few months and you and your friends and family are invited to join us at any or all of them:

- Remembrance Service: 3pm at St Gregory's Church on Sunday 13th November

- Joint Advent Service: 3pm at St Gregory's Church on Sunday 27th November

- Candle Lit Carol Service: 5pm at Marnhull Methodist Church Wednesday 21st December

Hope to see you at all or some of them! Gillian

'Give thanks to the Lord for He is good. His love endureth forever.'
Psalm 107 v.1

BISHOP'S LETTER - NOVEMBER

By The RT Revd Karen Gorham, Bishop of Sherborne

A WARM WELCOME

It has been encouraging to see, following the death of our beloved Queen, people finding comfort and solace in our church buildings and within our liturgies. The ability to say a prayer, light a candle or remember a loved one are enabled by our open doors and warm welcomes.

I have met a number of people these last few weeks who have particularly commented on the welcome they have received within our churches. Such was the welcome that they decided to stay, become involved and grew in faith as a result. That is wonderful testimony to God in action, as we look out for the stranger and the searcher with the eyes of Christ and share with them the joy, love, hope and hospitality of the Gospel.

November is traditionally the month for remembrance, so the continued desire for individuals, perhaps with delayed grief following the Covid years, to find expression in Christian ritual within our churches will continue. Yet Christ's command to love extends far beyond those who come into our buildings, and includes looking outwards providing for those in need, by sharing what we have, and welcoming in the least, the last and the lost.

This winter the Warm Spaces initiative invites us to partner with others in our town and villages to offer a welcome place for all those desiring shelter, warmth, and company. It may be that we support an initiative in our local village hall or library, or it may mean we invite others to help us provide that space in our churches buildings which are already being heated for worship.

As Thomas Long writes in his book 'Beyond the Worship Wars - We show hospitality to strangers not merely because they need it, but because we need it, too. The stranger at the door is living symbol and memory that we are all strangers here. This is not our house, our table, our food, our lodging; this is God's house, table, food, and lodging. By God's grace we are all welcome.

Bishop Karen.

BISHOP'S LETTER - OCTOBER



'The past is a foreign country: they do things differently there', as novelist L.P. Hartley famously began his affecting tale *The Go-Between*. The momentous events in our nation during September have reminded us how elastic time can be - and how a mere day or two can become elongated by significance, so that the time before appears remote and indeed foreign to us.

The Psalmist asks God to teach us how to number our days, that we may apply our hearts to wisdom, with the inference that we should understand both the constraints and gifts of our allotted time span and turn to the one who holds these days in his hand. As the seasons shift, the Christian year adopts a memorial tone, as we prepare to look back in thanksgiving for all those God has given us as examples of good and holy life. This leads naturally from Harvest or Creationtide as those weeks are increasingly known, when we offer up in gratitude all we have received.

The approaching winter is feared this year by some and will doubtless bring hardships to many across the country, with escalating costs of heating and food. Communities will not only need material relief during these months, but the kind of spiritual resilience that comes from strong bonds of neighbourhood and a deep, prayerful reliance on God. A few people in a parish cheerfully living this way can have a wonderful, luminous effect, lighting the onward path for others. So may Christ inspire each of us to 'do things differently', not only in the past, but in the weeks to come.

+Andrew

OUR LADY'S CHURCH



CAFOD World Food Crisis Appeal

Our Catholic community rises to the challenge of supporting our sisters and brothers Overseas. In northern Kenya, Ethiopia and South Sudan and Somalia, four years of unbearable drought mean that up to 20 million people are fighting for their very survival. CAFOD Director, Christine Allen visited the East Africa which is facing the worst drought in 40 years. She described the area as 'LIKE A LUNAR LANDSCAPE.' Life has been tough in these areas but only a few years ago communities were able to feed their livestock and grow vegetables. The animals are now dead and without water plants won't grow. There is no state support system to help these people. CAFOD works with and supports CARITAS Marsabit, the local Catholic Church who are on the frontline providing food aid. Isacko from Caritas Marsabit told us; "We need more support to bring water and food to these communities that are really suffering. We need to feed these hungry people and quench their thirst. We need resources to reach out to these communities and save lives."

To find out more or make a donation visit CAFOD website
www.cafod.org.uk

ST GREGORY'S C OF E PRIMARY SCHOOL



SNUGGLE STORY SACKS! Last year St Greg's focused heavily on reading within the school, many of you will recollect the Bike4Books fundraiser, the legacy of which is of course books for the children. The last month we have issued snuggle story sacks, these contain not only a book but also the sack itself, a hot chocolate and marshmallows to enjoy at home. Ceci pictured herer is clearly enjoying her swag (lucky girl)



DOG BLOG. Daisy our school dog has been busy across the whole school, be that helping our reception children with a bikes and trikes section in the playground, or swimming with Owls.

Phoenix (pictured) has been helping train Daisy who can be seen responding to some clicker work. Foxes class have also created some fun time for her with the creation of a snuffle mat.



BURTON STREET. Most villagers will be aware of the fantastic phone box on Burton St that sports many different displays throughout the year. St Greg's were delighted to recently contribute to this great community endeavour. Children's artwork was displayed for a time, and we look forward to more St Greg's displays in the future.



PTFA NEWS! Having recently held its AGM and having looked back on last year the PTFA is currently putting plans in place for this school year. Once again the main aims to raise funds and to include the community as much as possible. We have 2 quizzes in the pipeline, one in March the other in June, please keep an eye out for further details in due course. We are pleased that once again Simon Hoare will be our quiz master and the usual good night out should be guaranteed. If you have any questions for the PTFA please direct them to ptfastgregs@gmail.com.

HEDGEHOGS

READY, STEADY GROW! Our topic this half term is all about food; where it comes from, how it does it grow, what's its source; plant or animal? Our other learning revolves in part around this central topic for a while at least. Within the classroom we have a well stocked shop, children can get a loaf of bread, eggs and other staples and enjoy working behind the counter as well as shopping. Our learning has spread outside, we not only converted the school gazebo into a café, we also created seasonal recipes of apple pie and crumble in the mud kitchen.

Our class reads at the moment are also based around growing and food, we have been enjoying both The Little Red Hen & Jaspers Beanstalk. The children work very hard at reciting the stories, we achieve this through story maps and actions. Our Year 1 children have been collecting, ordering and sorting Autumn leaves and other objects then categorizing them according to shape, colours and special features.



OWLS

SUPER SLEUTHS. Owls class have been out and about in Marnhull, you may have seen us! Our topic is street detectives, we started by observing google earth giving us an aerial view of Marnhull where we discovered what a widespread village live, play and school in. The land around the village caught our eye, farming is such a significant part of our community! A trip around the village followed next as we visited some of the landmarks of Marnhull, we saw 2 Inns, 2 shops, 2 churches, a garage, a chemist and a beauty salon. It will come as no surprise that we discovered the play area at the recreation ground, nor will it come as a surprise that we decided to take a pit stop there also. Finally, we carried out a traffic survey along New Street to better understand what vehicles the folk of Marnhull drive.



HOWZ THAT! The outdoor cricket season may be over but that does not mean we cannot hone our skills. We have been practicing our fielding, batting and bowling ahead of an upcoming match.



BADGERS Class have been making the most of the pool just before it closes for the winter months. We have enjoyed excellent use of the pool since the summer break, the weather has been kind and the super air source heat pump recently installed keeps the water temperature at a steady 28C. Mrs Coling supervised us as we learn water safety and rescue skills. Our final session of the year included plenty of fun as we enjoyed fun games and relays.



MARTHA'S MONTHLY MESSAGE. This month the Yr.6's have been writing their speeches for the jobs they would like to do in school. These are for Young Governor, Chair and Vice Chair of the School Council and scribe. We have also been really busy doing lots of work with our new teacher Mrs Brown who is lovely teaching us! As part of our topic, we have been learning about the painter Frida Khalo (photographed). As inspiration we did our own self portraits which are now hanging up in the school (photo below). We have also been doing lots of homework to help us get ready for SATs in May. Can't wait to report back to you again next month.



FRIENDS OF ST GREGS. The school relies heavily on the goodwill of local businesses, some of these goodwill champions are showcased on our school website. We are extremely grateful for their support. <https://stgregorymarnhull.dorset.sch.uk/friendsofstgregs/> If you feel your business or you personally can help the school in anyway pleased do get in touch.

CONTINUED PAGE RIGHT >>

CONTINUED PAGE RIGHT >>

INTERESTED IN JOINING ST GREG'S? We always welcome prospective families no matter the time of the year. Come and see first-hand what a wonderful place St Greg's is. Our website gives an insight into the school, but nothing compares to seeing and hearing our classes in action.

<https://stgregorymarnhull.dorset.sch.uk> Telephone - 01258 820206

Email - office@stgregorymarnhull.dorset.sch.uk

SCHOOL FOR HIRE! If anyone wishes to let our school hall, this can be arranged - contact the school office on 01258 820206 for all enquiries. Anyone who has attended the Zumba classes on a Wednesday will be familiar with the hall.

ST MARY'S CATHOLIC PRIMARY SCHOOL



As we draw to the end of the first half of the Autumn term, we are enjoying the beautiful autumnal colours the season brings us. The children been collecting leaves and using branches to build dens at playtimes.

The teachers had the chance to meet with parents and report on how well their children had settled back in to school. Children who joined us in September have quickly become part of our St Mary's family. Our PTFA organised a 'Break the Rules' fundraiser a few weeks ago - the children came to school with some VERY interesting hairstyles and outfits! When I was showing a prospective parent around school the other day, the children were keen to share why they loved our school: "It's a lovely school. Everyone is so kind. The teachers make learning fun."

St Mary's Explorers Preschool

The children have enjoyed exploring colours and emotions using our class book 'Colour Monster'. It's a lovely book which supports the children in developing the vocabulary necessary for communicating their feelings to others. The outdoor area continues to provide rich and varied learning experiences. The children love mixing up potions in the mud kitchen and have recently harvested some fabulous vegetables. We continue to provide a daily fiddly fingers activity working on developing their pincer grip ready to hold a pencil appropriately. There are always lots of opportunities for mark making throughout the provision. Developing an interest and love of mark making early is a great basis for writing skills later. St Mary's Explorers is open from 8:45am - 3:15pm every week day during term time and spaces are available for children aged 3 years+, with wrap around care from 8am - 6pm. If you would like to have a look around, or come and stay for a taster session, please call 01258 820417 to make an appointment.



St Anthony

One of our class books this month was 'Emily Brown and the Thing', a warm hearted tale with a familiar theme; being afraid of the dark. The children could really relate to the 'Things' bedtime troubles and reflected on how calm and patient Emily Brown was. They enjoyed discovering some magical story settings whilst exploring new vocabulary. It was fun visiting the 'Weird Witches' cavern and mixing up their own medicines. In Science we have been naming our senses and using them to explore the world around us. The children enjoyed a senses welly walk, they heard bird song, tasted blackberries, smelt pine needles, saw autumn leaves and discovered different textures feeling rough bark and soft grass. Their favourite science lesson this month was definitely our



popcorn senses lesson. It was great to consolidate their learning with this memorable experience and their faces as the popcorn popped were priceless.

St Mark

This term began with a 'Art for Kids Hub' inspired sketch of Plop the Owl from 'The Owl Who Was Afraid of the Dark', who then provided the emphasis for our first writing unit. The children used the skills practised to shade and blend colours in spirals during art and a colourful sunrise during reflection in RE all about new beginnings! In Science, we had great fun exploring the role forces play in our daily lives and have begun creating their own experiments to investigate the properties of magnets. The children particularly enjoyed acting out how the fibres of a carpet act to slow down a moving object showing a physical representation of friction after we had investigated which materials would slow down a moving car the quickest. In geography we have been exploring all around the world; from the freezing icebergs in Greenland, tropical rainforests of Brazil and dry and arid conditions in the Sahara Desert as we compared the five major climate conditions around the globe. Every lesson begun by opening a suitcase full of suitable clothes - and the children took delight that a teddy bear managed to smuggle his way in every single time!



St Francis

This half term in St. Francis we have been learning all about the rainforest. We started the topic off by locating rainforests around the world and noticing that they are located quite close to the equator and between the tropics. One wet and cold Friday afternoon, we went outside and gathered some resources from the natural environment to create our own rainforests in a jar as we had learned about the different layers. The children gathered stones for the forest floor, soil for the understory and planted cress seeds in the soil. They then covered their seeds with grass to act as the canopy layer of the rainforest. Over the next few days, the children observed the growth of their cress seeds and we very surprised that they could see them grow over the canopy. I explained to the children that their cress seeds were the tree tops of the emergent layer. The children were very excited to grow their own magical rainforests!



St Alban

Recently, St Alban's class have been busy researching the rise and fall of the British Empire. They have carried out case studies of the Commonwealth, explored the motives behind gaining control of the different countries and looked at the impact the empire had on this. Soon we will be having a debate on whether or not the British empire was a good or bad idea. We have also been exploring light during Science lessons. We turned our classroom into a 'darkroom' and carried out several investigations such as; which colours reflect light the best, how we can bend light and how to make periscopes.

Do you have a child due to start school in September 2023?

With the deadline approaching for new parents to make choices on a school for their four year olds, any prospective parents are welcome to call the school on 01258 820417 to organise a tour or just pop into the school office and ask to take a look around. Our popular preschool also has spaces. We find that children who attend our preschool setting make a smooth transition into Reception, since they are familiar with the environment.



AJS Plumbing & Heating
Plumbing & Heating Engineer

Tel: 01963 400503 or 07814 038852
Email: office@ajs-plumbingandheating.co.uk
Website: www.ajs-plumbingandheating.co.uk



Boiler Servicing & Maintenance
Air Source Heat Pumps/Ground Source Heat Pumps
Bathroom Installation Underfloor Heating
General Plumbing
Landlord Certificates & Power Flushing



Yenstone Walling Ltd 

Dry Stone Walling and Landscaping
All types of stone walling undertaken

Patrick Houchen 01963 371123
DSWA member 07791 588141
CIS registered www.yenstonewalling.co.uk



BRAMALL GARDENS LTD

DESIGN—LANDSCAPING—MAINTENANCE

EXPERIENCED IN ALL ASPECTS OF GARDENING

FAST AND EFFICIENT
ALL RUBBISH REMOVED



☎ : 01258 820394 MOBILE : 07971 793 872

Vale Electrics

- New Installations
- Rewires
- Replacement Consumer units
- Condition Reports
- Fault Finding

Tel: 01258 821420 Mob: 07740403033
Email: valeelectrics@hotmail.co.uk
8 Plowman Close, Marnhull, DT10 1LB




**Dorset Forge
& Fabrication**

Chris Hannam

01935 50 82 81 - 07950 33 75 76

Elm Yard, Three Elms Inn, North Wootton
Sherborne DT9 5JW

- Traditional and Contemporary Forge Work
- Design Service
- Gates and Railings
- Garden Architecture
- Balconies and Handrails
- Restoration
- Cast Iron Repair
- On-site Welding and Fabrication Service
- Shot Blasting and Painting Service
- Brick, Stone and Flintwork

chris@dorsetforgeandfabrication.co.uk
www.dorsetforgeandfabrication.co.uk



Providing competitive Property Maintenance Services for both residential and commercial properties to home owners, Letting agencies and Landlords throughout Dorset, Somerset and Wiltshire.

Services include:
Painting & Decorating, Internal & External Property repairs,
Kitchen and Bathroom re-modelling, House clearances

Revsol Property Services are also licensed waste carriers
and undertake house clearances and deep cleans

For further information call Duncan on Main line: 01258 820870
Mobile: 07966 016686 or Matt on 07483 822245
email revsol@outlook.com



Experts in local knowledge



SALES, LETTINGS, COMMERCIAL, SURVEYS

More Properties Urgently Required!

Gillingham * Shaftesbury * Sturminster Newton * Wincanton

Tel: 01258 473900

HOOK

ELECTRICAL CONTRACTORS

Domestic Commercial Ecclesiastical

All Aspects of Design, Installation, Inspections & Repair works

Contact Ed Cudlip on 01258 820161 or 07956281644

Email: hookelectrical@gmail.com



OAK DIGITAL SOLUTIONS

IT HELP AND TRAINING

- Problem Solving for all your Technology
 - Help with Software and Applications
 - Wi-Fi Connections and Printers
 - Friendly Patient Personal Training at Home
 - Installation and Setup of Equipment
 - Changing Batteries and Sim Cards
 - Transferring Pictures, Documents and Files
- Computers, Mobile Phones, Tablets, Laptops, Printers, Wi-Fi, Smart TVs, e-book readers etc.

WEBSITE DESIGN

Individual Website Design for Small Businesses
Optimised for PC, Mobile Phones & Tablets
Reliable Hosting & Top Level Security

Contact Chris: **07758 032062**

oakdigitalsolutions@gmail.com

www.oakdigitalsolutions.co.uk



LODESTONE

Property Sales, Lettings & Advice

lodestoneproperty.co.uk



THE DORSET TRIO MAKING HOMES HAPPEN

With over 200 years of property experience between us, our team have had plenty of practice opening new doors for clients.

Through our dedicated sales team, sales progressor, local specialist viewing agents and an online global reach of over 100,000 a month, we are well placed to make your next home happen.

Please call our Shaftesbury office if you would like further advice about the current market.



Simon Neville-Jones
Branch Manager



Alison Cuff
Sales Advisor



Rosa Clutterbuck
Lettings Manager

bruton@lodestoneproperty.co.uk
01749 605099

shaftesbury@lodestoneproperty.co.uk
01747 442577

wells@lodestoneproperty.co.uk
01749 605088

The Jungle Hut Pre School



We are a childcare setting providing care and education for children aged 2-4 years on the premises of St. Gregory's Primary School in Marnhull. We are open from 8.30am until 3.00pm for 38 weeks per year, on a term time only basis.

We are a community group, a company limited by guarantee and a registered charity.

For more information please visit our website: www.thejunglehutpreschool.co.uk

Or contact us on: **01258 820096** or at: thejunglehutpreschool@hotmail.com



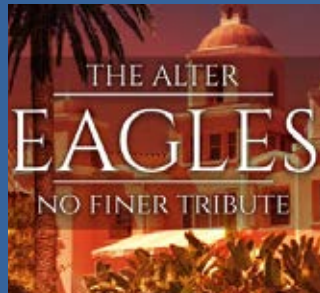
THE EXCHANGE STURMINSTER NEWTON

01258 475137  WWW.STUR-EXCHANGE.CO.UK
FULL LISTINGS AVAILABLE ON OUR WEBSITE

ROCK FOR HEROES
SAT 4TH NOV 7.30PM



THE ALTER EAGLES
FRI 11TH NOV 7.30PM



FROM GOLD TO RIO
SAT 26TH NOV 7.30PM



LOS PACAMINOS
SAT 3RD DEC 8PM



CHRISTMAS AT THE OPERA
FRI 9TH DEC & SAT 10TH DEC



THEATRE
DANCE
MUSIC
COMEDY
CINEMA
GALLERY
CAFE
VENUE
HIRE

Village Hall Supporters Club

Have you renewed your annual subscription?

For just £10.00 per ticket, you could win a top prize of £150.00, a second prize of £100, or one of three £50 prizes. By buying a ticket you will also be helping support the continued refurbishment of the Village Hall.



The cost of one ticket is just £10, which will entitle the owner to be entered for four quarterly draws. To simplify the payments, we have introduced the option of bank transfer, as well as cheque or cash. You can join the Club at any time of the year. You will then be entered for the next Quarterly Draw, which will be on **30 September 2022**. Please complete the Application Form below and send either in the post or via email with your payment method to the Treasurer – details at the bottom of the form.

Marnhull Village Hall Supporters Club APPLICATION FORM

I /We wish to become member(s) of the Supporters Club and purchase tickets at £10.00 each per annum to be entered into the prize draws.

NAME PHONE No

ADDRESS POST CODE

..... EMAIL

PAYMENT METHOD

(1) BACS payment to: Marnhull Village Hall, Sort Code 30-90-92, Account No 00622645

Please use SUPPORTERS CLUB as the Payees reference

(2) By Cheque payable to MARNHULL VILLAGE HALL

(3) By Cash

Signature Date/...../ 2021

Please return your application form to: Rob Norton, Treasurer, Marnhull Village Hall, The Retreat, New Street, Marnhull, DT10 1QA. If you are paying online you can scan or photograph your application form and Email to: treasurer@marnhullvillagehall.org.uk

**ARO CLEANING SERVICES
FOR CARPETS & OVENS**

Quotations are **FREE**
info@aroservicesltd.co.uk

Contact Andy
07507 779000



Jill Cook
Counsellor
BACP Senior Accredited
www.jillcook.co.uk

I offer support for issues including anxiety, depression, relationship difficulties & bereavement.

For more information please contact me

07944 669416
Marnhull & Milborne Port

Boilerwise Ltd
Specialist Boiler Engineers

Repair, Service, Maintenance and Replacement of OIL and GAS Boilers. Heating System Fault Diagnosis and Repair. Landlord Certificates, Systems Surveying and Power Flushing.

01258 474605
24hr Gas Safe and Oftec Registered Engineers

 572546 

©LLW


TAXI – CAR





Courteous Lady Driver
Tel: 01258 820526
Mobile: 07929 983095

www.sjcltd.co.uk 01258 471669 enquiries@sjcltd.co.uk


Simon John Christopher Ltd
Chartered Accountant & Tax Consultants



Accounts Preparation
Self Assessment Tax Returns
Tax Consultancy

 Drapers House, Market Place,
Sturminster Newton, DT10 1AS 

**The
Curtain
Man**



Curtains ~ Blinds
Carpets ~ Vinyls
Tracks ~ Poles
Fabrics ~ Cushions
Measuring & Fitting Service

Burton Street, Marnhull, Sturminster Newton,
Dorset. DT10 1PH
T: 01258 821117
E: thecurtainmanshop@gmail.com

TREAT YOUR FEET!

Julie Anne Smith
DpodM MRCPod
PODIATRIST

01258 821297

Burton Street, Marnhull,
DT10 1PS
stedmundspodiatry@gmail.com



R&S

LEWIS JOINERY

Purpose made fitted wardrobes
bookcases, cupboards,
hardwood windows,
doors & gates.
lewisjoinery@hotmail.com
01258 820467
Workshop 01963 363862

PLUMBWOOD

For all domestic plumbing repairs:
taps, toilets, radiators, showers
etc – no job too small.

*Woodwork projects also
undertaken*

Call Tim and Helen Cronin
01258 820520/07780 673053



4 Musbury Close,
Marnhull

Ben Hannam Electrical Contractor

All aspects of electrical work undertaken

- New installations and rewires
- Alterations and additions
- Consumer unit (fuseboard) upgrades
- Fault finding and repairs
- Condition reports
- Heating controls and systems



Tel: 01258 808 329 • Mobile: 07914 760 295 • Email: benhannamelectrical@gmail.com



Renovations • Extensions • New Builds
Conservation Works • Listed Works
Loft Conversions • Property Maintenance
Kitchen & Bathroom Installation

Tel: 01963 363002 Mob: 07886 957385
www.regencyrenovations.co.uk

R.M. MOGRIDGE CONTRACTING LTD

For All Your Construction Needs

- Commercial • Domestic • Agricultural • Equestrian
- Excavation • Ground Clearance • Spoils Disposal • Foundations
- Drainage • Septic Tanks • Concreting • Tarmacing • Paving
- Oversites • Driveways • Kerbing • Ponds • Lakes • Synthetic Lining

For Advice & Free Quotations

Tel. 01963 363208 or 07836 747895

E.mail: rmmogridgecontractingltd@btconnect.com

LITTERPICKERS

Help us keeping Marnhull village and
surrounding roads litter free.

Join our band of volunteers,
contact John Seear on 01258 269743



**MARNHULL
COMMUNITY CAFÉ**

IS OPEN

on the 3rd Friday each month

10-12 @ The Village Hall

**The café is free so all welcome for coffee,
cake and a chat**

Supported by the Blackmore Vale Partnership



Marnhull Village Care
A warm welcome to the Village & Support in our Community



Do you need help with shopping, going to hospital or dentist for treatment or visiting a relation, feel lonely, just want a chat or some company for an hour or so? Whatever is of concern to you and you live in Marnhull, Marnhull Village Care can help, we have a number of volunteers and professional people that are available all you have to do is ring any of the following numbers.

Car journeys Mrs Ann Davis - Penson 07434 638485
Anything else Hilary Parker 01258 821667
or Trevor Vaughan 07796443832 / 01258 821636

**You are not alone - we are here to help.
Phone us or email: trevor.mpc@gmail.com.**



Marnhull
Community Choir
Presents

A Technicolour Christmas Concert

Colour is the theme of the concert and songs include a selection from Joseph & the Amazing Technicolour Dreamcoat, Greensleeves, Blue Moon, White Christmas, Silver Bells, Let it Snow, Rudolf the Red Nosed reindeer and much more.



Friday, 2nd December 2022

Marnhull Village Hall

7.30pm

Tickets: £10.00 Under 16's: £5.00

Available from Robin Hill Stores



Friars Moor Veterinary Clinic
is a professional, dedicated
and friendly team providing
excellent care in the best
interests of you and your pets.

**24 Hour Emergency Care
Consultations by appointment**

Sturminster: **01258 472314**

Shaftesbury: **01747 850500**

Blandford: **01258 472160**



www.friarsmoorvets.co.uk





'Rustic Farm Shop on our farm in Marnhull'

- Great variety of tasty local products.
- Wide selection of local meat and game including our own meat, and personalised meat orders.
- Takeaway bacon rolls, hot drinks and cream teas.
- Good selection of big bag dog foods.
- Local Cider and beer.
- Individualised Hampers and treat bundles for any celebrations or Birthdays.
- Gift Vouchers



Why not pop in? Open 10am to 3pm.
Mon, Tues, Thurs, Fri & Sat
DT10 1QG

Or ring/text 07866 984323 | Email maria-robinson40@yahoo.co.uk  



CLOCK HOUSE Bed & Breakfast Burton Street, Marnhull

Charming, peaceful, tucked away B&B in the centre of the village. Clock House offers four ground floor, ensuite bedrooms with terrace and garden access and a guest living room with woodburning stove. Dog friendly.

Discounted rate for Marnhull villagers booking direct.



Telephone: 01258 820645
info@clockhouse-marnhull.com
www.clockhouse-marnhull.com

WORD of MOUTH HOME IMPROVEMENTS PROFESSIONAL, RELIABLE, LOCAL

- Painting – interior/exterior
- Decorating
- General building maintenance
- Guttering – clearing/replacing
- Roof repairs
- Bricklaying
- Re-pointing
- Carpentry
- Tiling
- Paving
- Window replacement/installation

Please call Andy for a free quote

Mobile 07939 196384

Email: yaffle1@hotmail.co.uk

www.Back2Market.com

REMOVALS - PACKING - STORAGE - CLEARANCE



Contact us for your free, no obligation quote

Phone: 01963 400352

Freephone: 0800 2425012

Mobile: 07853 275379

Email: enquiries@back2market.com

Website: www.back2market.com

**BARTLETT
CONTRACTORS LTD**

AGRICULTURAL CONTRACTORS
COMPLETE AGRICULTURAL CONTRACTING SERVICE

CIVIL ENGINEERS: HEAVY AND RURAL
OPERATED PLANT HIRE, HAULAGE, LANDSCAPING, FENCING,
LAND DRAINAGE, HEDGE TRIMMING,
LAKE AND POND CONSTRUCTION

TRACK REGENERATION
POTHoles TAKEN OUT IN ONE PASS,
QUARTER THE PRICE OF RESTONING THE SURFACE. CEMENT
CAN BE INCORPORATED



SUPPLIERS OF OOLITIC LIMESTONE, TURF, TOPSOIL,
SAND, GRAVEL, SCALPINGS AND MORE

01258 472419

Web: www.bartlettcontractors.co.uk

For more information please visit:
www.marnhullstone.co.uk



SUPPLIERS OF NATURAL AND CUT STONE:

*RANDOM DRESSED
SAWN SPLIT
CHISEL FACED ASHLAR
WINDOW SURROUNDS
DECORATIVE WALLS*



FIREPLACES



ASHLAR



FLOORING

Dean Harris (Quarry Manager): 07771 684647
Office: 01258 472419
Whiteway Quarry, Whiteway Lane, Marnhull,
Dorset, DT10 1NQ

**TONY WILLIAMS
ACCIDENT REPAIRS**



MIRACLE PULL - DENT REPAIRS

APPROVED BY:



LOCATED BETWEEN MARNHULL & STALBRIDGE

01963 365733

**OFFERING THE HIGHEST QUALITY REPAIRS USING THE BEST QUALITY
MATERIALS & EQUIPMENT**





ROBIN HILL STORES

POST OFFICE & CONVENIENCE STORE



- Beautiful Fresh Fruit & Veg
- Locally sourced hand carved ham & cheeses
- Fresh snacks & sandwiches
- Locally baked speciality breads & cakes
- Newspapers & Magazines
- Cards, Stationery
- Wines, Beers & Spirits
- A big range of household essentials

Full Post Office service including cheques & cash, car tax, electricity, gas & mobile top up. National Lottery, Foreign currency & Dry Cleaning



FREE home delivery available

01258 820959 | robinhillstores@gmail.com | www.robinhillstores.co.uk
Mon – Saturday 7.30 til 8 Sunday 7.30 til 12



Love your Local Shop,

THINK BIG, SHOP SMALL



New Inn Farmhouse & Barn



5 Star Holiday let & B&B

Consisting of 8 Bedroom (5 ensuite), games room, & Hot tubs

Located in the beautiful Dorset Village of Marnhull



Contact: newinnfarmhouse@outlook.com

Tel: 07966 016686

Or visit: newinnfarmhouse.co.uk



All aspects of building work undertaken including:

- **Extensions**
- **New Builds**
- **Roofing**
- **Renovations**
- **Loft Conversions**

Camelot Builders Ltd
Farm Office
East Lawn Farm
Lawn Crossroads
Gillingham
Dorset SP8 5QN
www.camelotbuilders.co.uk

Tel: 01747 835422

email: info@camelotbuilders.co.uk





BADMINTON FOR BEGINNERS

Monday club social night: 8–10pm (except bank holidays)
 £25 Joining Fee
 Adults £4.50
 Family £7.00 (up to 2 adults & 2 children)
 Juniors £3.00

ALL COACHING FREE (Badminton England Coach)
 Loads of fun for children and families

BADMINTON CLUB NIGHT

Tuesday club night: 7.00–10.00pm
 First night free to new members

ALL COACHING FREE (Badminton England Coach)
 Intermediate level players always welcome

BADMINTON SENIOR NIGHT

Thursday senior league night: 8.15-10.15pm
 The club is interested in players who wish to play at a league level.

The club participates in the salisbury district league – div2 mens and div2 mixed and div3 mixed

Contact: Robert Tulk - 01258 820728

Meet at Riversmeet on Mondays, Tuesdays & Thursdays

FRENCH & SPANISH CONVERSATION

Want to get those little grey cells working? Then come along to French or

Spanish conversation! This can complement your work with Duolingo or refresh your memories of your O level days. For more information contact

Ros Eveleigh on 821049.

FIX DON'T THROW

The team at Dorset Tech have been training with specialist micro-soldering techniques and will soon be able to do levels of tech repairs that are not offered in the area.

This large investment in high-end microscopes, hot air stations and Apple accreditation will allow us to save even more devices from becoming e-waste. We're encouraging residents of Marnhull to "Fix don't throw". Something as simple as a battery replacement can make an old phone feel like a new one.

Currently our repairs are carried out at our high street branch in Gillingham, but we're investigating having pop-up tech help sessions in the village. We'd love to have your feedback on this.

For more information visit dorset.tech or call 01258 808577.

MARNHULL CRAFT CLUB

Meets at 10:00am on the first Thursday of every month (except August) in

The Methodist Church Hall

Relax, meet new and old friends for coffee and chat. Use your skills and learn something new, in a friendly and relaxed atmosphere.

More information from Allison Palmer - 07810464630

MARNHULL BRIDGE CLUB

Marnhull Bridge Club meets in the Methodist Hall every Tuesday at 2pm to play Chicago.

New Players always welcome.

Call 01258 820036 for information

MARNHULL GARDEN CLUB

The Garden Club meets at 7.30pm on the 2nd Tuesday of the most months, in Marnhull Village Hall.

Come and join us for refreshments and a chat. We usually have a guest speaker and learn some new gardening tips.

For further details contact Dave Bruce (Chair) on

Bruce11@sky.com

New Messenger Deadline: 14th November

E-mail all texts, announcements and other requests to: editor@marnhullmessenger.org.uk

CROSSWORD AND SUDOKU ANSWERS

8	7	1	2	4	9	5	6	3	8	2	1	6	3	7	5	4	9
9	6	4	5	7	3	8	2	1	9	7	5	4	2	8	6	1	3
6	3	8	7	9	2	1	5	4	3	1	9	7	8	2	4	5	6
1	4	9	6	3	5	2	8	7	5	6	4	3	9	1	8	2	7
7	8	2	7	8	1	4	3	9	7	8	2	5	6	4	9	3	1
4	8	6	9	2	1	7	3	5	2	9	3	1	4	6	7	8	5
3	9	2	4	5	7	6	1	8	6	5	8	2	7	3	1	9	4
7	1	5	3	6	8	9	4	2	1	4	7	8	5	9	3	6	2

Hard

Medium

DOWN 1. Angle 2. Capability 3. Tenon 4. Guano 5. Cathay 6. Tilt 9. Ripon 10. Essay
 12. Gorgonzola 13. Latin 14. Rasta 18. Danube 19. Pecan 20. Leech 22. Elver 23. Play
ACROSS 1. Avocet 4. Gecko 6. Tun 7. Open cast 8. Tree 11. Bongo 13. Lyre 15. Apostle
 16. Egotism 17. Indy 19. Pylon 21. Neap 24. Uncle Tom 25. Ely 26. Glean 27. Header



From Design to Reality



Products range from **conservatories, extensions, loft conversions, alterations, new properties, natural stone** etc. Based in Sturminster Newton, between Shaftesbury and Blandford, we cover Dorset, Wiltshire, Somerset, Hampshire and beyond.

Calcott Construction is a building contractor who has been established since 1984 and handles all types of home improvements from conservatories to new dwellings. We provide a personal hands on service on all projects large and small. We always have a regular team of friendly and experienced tradespeople to complete all projects to the highest standard.

We are able to assist you in the design process right through to the reality of a completed project with the aid of an architect.

Conservatories Extensions Loft Conversions Alterations New Properties Natural Stone Dry Stone Walling

T: 01258 475 046
www.calcottconstruction.co.uk



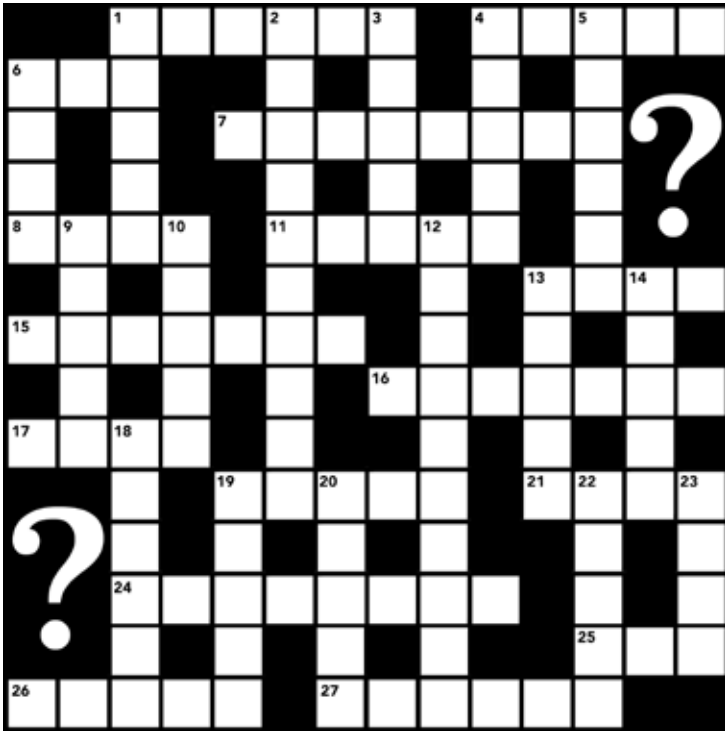
**COMPTON
SMITH**
INTERIORS

www.comptonsmith.co.uk
FULL INTERIOR DESIGN SERVICE

- Interior decorating consultancy.
- Bespoke curtains, blinds and upholstery.
- Suppliers of well-known specialist paints, wallpapers & fabrics:
Farrow & Ball, Little Greene, Pierre Frey, Colefax & Fowler, Lewis and Wood, Sanderson Design Group and many more designers.

Monday to Friday: 8.30am - 5.30pm
Saturday: 9.30am - 1.00pm

10d Wincombe Business Park,
Shaftesbury, Dorset SP7 9QJ
Tel: +44 (0)1747 850150



ACROSS

- 1) Black and white long legged wading bird with an upturned bill. (6)
- 4) Nocturnal lizard with adhesive pads on it's feet found in warm regions. (5)
- 6) Large beer or wine cask. (7)
- 7) Type of mining where ore is extracted from near the Earth's surface. (4-4)
- 8) Large woody perennial plant usually with a single stem. (4)
- 11) Each of a pair of small drums held between the knees. (5)
- 13) Stringed instrument used in ancient Greece. (4)
- 15) A chief disciple of Christ. (7)
- 16) The quality of being absorbed in oneself. (7)
- 17) Type of motor racing where cars are driven round a banked oval circuit. (4)
- 19) Tower like structure for carrying electricity cables. (5)
- 21) Tide where there is the least difference between high and low water. (4)
- 24) Titular character in a book by Harriet Beecher Stowe about slavery in America. (5-3)
- 25) Cathedral city in East Cambridgeshire. (3)
- 26) Gather leftover grain after a harvest. (5)
- 27) Brick laid at right angles to the face of a wall.(6)

				5	
3	6	9		2	7
7				6	
3				2	
			9		7
8	2	6	4		3
9		4		7	5
6		2	7		9

		2		9	5
	5	3			4
9					
6				1	4
			3	2	8
5		8		3	9
4			2		
3	2	4	5		6
				8	

DOWN

- 1) To fish with a rod and line. (5)
- 2) Name adopted by gardener Lancelot Brown. (10)
- 3) Small saw with a brass back for precise work. (5)
- 4) Fertiliser made from the droppings of bats or seabirds. (5)
- 5) Historical name for China. (6)
- 6) Thrust with a lance in jousting. (4)
- 9) City in Yorkshire with a Cathedral and a racecourse. (5)
- 10) Piece of writing on a particular subject.
- 12) Italian cheese with blue veins.(10)
- 13) Language of ancient Rome. (5)
- 14) Member of a religious movement originating in Jamaica. (5)
- 18) Second longest river in Europe. (6)
- 19) Nut of a hickory tree in the southern US. (5)
- 20) Type of worm used for bloodletting. (5)
- 22) A young eel. (5)
- 23) To allow a fish to exhaust itself before reeling it in. (4)

MARNHULL TABLE TENNIS

Monday & Wednesday afternoons
 Now playing within Covid restrictions
 Come and try us!!
 Contact: Boyd Sofield - 01258 820964 or
 John Dowsett - john.dowsett@virgin.net

MARNHULL WOMEN'S INSTITUTE

Meets on the 2nd Monday in the month (except Aug)
 At 7.30pm in the Village Hall
 We look forward to seeing new and old members
 President: Nicola Denham - 01258 821343

BLACKMORE VALE ART GROUP

The group meets monthly on the second Friday at
 10:30am in the Village Hall.
 All styles and levels of experience are welcomed.
 For further information contact Yvonne 820247 or
 mikyon@aol.com

**All PUZZLE ANSWERS ON
 PAGE 32**



a fresh approach

- ◆ Buying and Selling Your Home
- ◆ Wills
- ◆ Powers of Attorney
- ◆ Probate and Estates
- ◆ Equity Release
- ◆ Commercial Property
- ◆ Agricultural and Rural Business
- ◆ Employment
- ◆ Property and Land Disputes
- ◆ Court of Protection



MacLachlan
SOLICITORS

Shaftesbury: 01747 440448
Sherborne: 01935 817736
Gillingham: 01747 822103

www.maclachlansolicitors.co.uk

PITMANS®



- Removals & Containerised Storage
- Partloads / Small Moves (Starting at £300+VAT)
- Shipping - Worldwide
- Local & Nationwide

01258 858564

www.pitmansremovals.co.uk



 **Karndean**
Designflooring
Commercial Distributor

Bespoke style with a price to make you smile.

SH  P
LOCAL

